

Clostridium difficile Surveillance April to September 2013 Bi-annual Report

Abertawe Bro Morgannwg University Health Board

- This report covers the surveillance period Apr – Sep 13. Data for this time period is provisional. The next bi-annual report will provide confirmed data for Apr 13 – Mar 14.
- Trend data is from Apr 10, when surveillance of total *C. difficile* began in Wales.
- Numbers of *C. difficile* include cases from all patients aged 2 and over.
- All ages are included in the hospital admission and population numbers used to calculate rates.
- Hospital admission data has been supplied by NHS Wales Informatics service (NWIS).
- Population data has been extracted from <https://statswales.wales.gov.uk/Catalogue/Population-and-Migration/Population/Estimates>

Abertawe Bro Morgannwg University Health Board *C. difficile*, Apr – Sep 13

- 127 cases of *C. difficile* have been reported for the 6 month period in this health board. This is a 7.63% increase in numbers compared to the equivalent period last year. The rate of *C. difficile* per 1,000 hospital admissions has increased by 12.65%, from 2.69 to 3.04. The rate of *C. difficile* per 1,000 hospital admissions in Wales has decreased by 8.71% for the same period. (Table 1.)
- Compared to Apr – Sep 10, there has been a 43.30% decrease in the number of *C. difficile* and a 41.08% decrease in the rate of *C. difficile* per 1,000 hospital admissions in this health board. The rate of *C. difficile* per 1,000 hospital admissions in Wales has decreased by 40.84%. (Table 2.)
- 83% (106) of cases were diagnosed in the 4 major acute hospitals in this health board, 2% (3) diagnosed in non-acute hospitals and 14% (18) in non-hospital locations.
- 80% (102) of cases in this health board were diagnosed in hospital inpatient locations. The inpatient rate is 2.44 per 1,000 hospital admissions for this period.
- 59% (75) of *C. difficile* in this health board were in female patients and 80% (101) were in patients aged 66+ for the 6 month period.
- The rate of *C. difficile* per 100,000 population has increased by 7.63% compared to the equivalent period last year, from 45.31 to 48.76. The rate of *C. difficile* per 100,000 population in Wales has decreased by 9.62% for the same period. (Table 1.)
- Compared to Apr – Sep 10, the rate of *C. difficile* per 100,000 population has decreased by 43.75% in this health board. The rate of *C. difficile* per 100,000 population in Wales has decreased by 42.74%. (Table 2.)

Table 1. Abertawe Bro Morgannwg University Health Board numbers of *C. difficile*, percentage change in numbers (from Apr 12 – Sep 12) and rates per 1,000 hospital admissions and 100,000 population by major acute hospital, Apr 13 – Sep 13

Health board/hospital	Number of <i>C. difficile</i>	% change in number of <i>C. difficile</i> (Apr 12 – Sep 12)	<i>C. difficile</i> /1,000 hospital admissions	<i>C. difficile</i> /100,000 population
Morrison Hospital	39	0.00% (39)	1.86	N/A
Neath Port Talbot Hospital	9	+80.00% (5)	5.40	N/A
Princess of Wales Hospital	27	-20.59% (34)	2.69	N/A
Singleton Hospital	31	+29.17% (24)	4.06	N/A
ABM University	127	+7.63% (118)	3.04	48.76
Wales	902	-9.62 (998)	4.13	58.52

Table 2. Abertawe Bro Morgannwg University Health Board quarterly numbers and rates of *C. difficile* per 1,000 hospital admissions and 100,000 population, Apr 10 – Sep 13

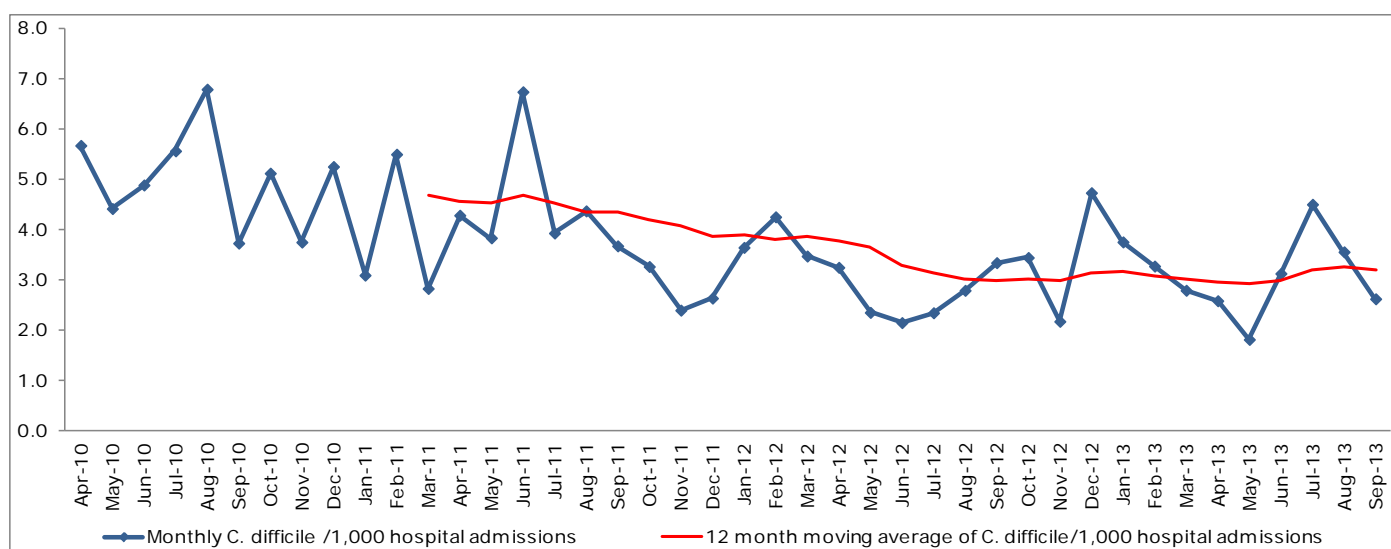
Otr/Yr	Number of <i>C. difficile</i>	Number of hospital admissions	<i>C. difficile</i> /1,000 hospital admissions	Population*	<i>C. difficile</i> /100,000 population
FY** Apr 10 – Mar 11	411	87896	4.68	515420	79.74
Apr – Jun 10	109	21920	4.97	128502	84.82
Jul - Sep 10	115	21557	5.33	129914	88.52
Oct – Dec 10	105	22417	4.68	129914	80.82
Jan – Mar 11	82	22002	3.73	127090	64.52
FY Apr 11 – Mar 12	355	92028	3.86	517981	68.54
Apr – Jun 11	112	22629	4.95	129140	86.73
Jul - Sep 11	91	22830	3.99	130560	69.70
Oct – Dec 11	65	23505	2.77	130560	49.79
Jan – Mar 12	87	23064	3.77	127721	68.12
FY Apr 12 – Mar 13	263	87341	3.01	519481	50.63
Apr – Jun 12	56	21738	2.58	129514	43.24
Jul - Sep 12	62	22052	2.81	130938	47.35
Oct – Dec 12	76	22447	3.39	130938	58.04
Jan – Mar 13	69	21104	3.27	128091	53.87
FY Apr 13 – Mar 14***					
Apr – Jun 13	52	20868	2.49	129514	40.15
Jul - Sep 13	75	20968	3.58	130938	57.28

*Quarterly population = (Total population/Number of days in year) x Number of days in quarter

**FY = Financial Year

***Data for FY Apr 13 – Mar 14 are provisional

Figure 1. Abertawe Bro Morgannwg University Health Board monthly and 12 month moving average rates of *C. difficile* per 1,000 hospital admissions, Apr 10 – Sep 13



*12 month moving average rates are shown from Mar 11 as this is when the first full FY of data is complete

Morrison Hospital *C. difficile*, Apr – Sep 13

- 39 cases of *C. difficile* have been reported for the 6 month period in this hospital. This is the same number as for the equivalent period last year. The rate of *C. difficile* per 1,000 hospital admissions has decreased by 0.93%, from 1.88 to 1.86. (Table 1.)
- Compared to Apr – Sep 10, there has been a 51.85% decrease in the number of *C. difficile* and a 58.98% decrease in the rate of *C. difficile* per 1,000 hospital admissions in this hospital. (Table 3.)
- The rate of *C. difficile* in this hospital is not significantly different from the rates for the major acute hospitals in Wales for this 6 month period. (Figure 6.)
- 90% (35) of the cases were diagnosed in hospital inpatient locations. The inpatient rate is 1.67 per 1,000 hospital admissions for this period.

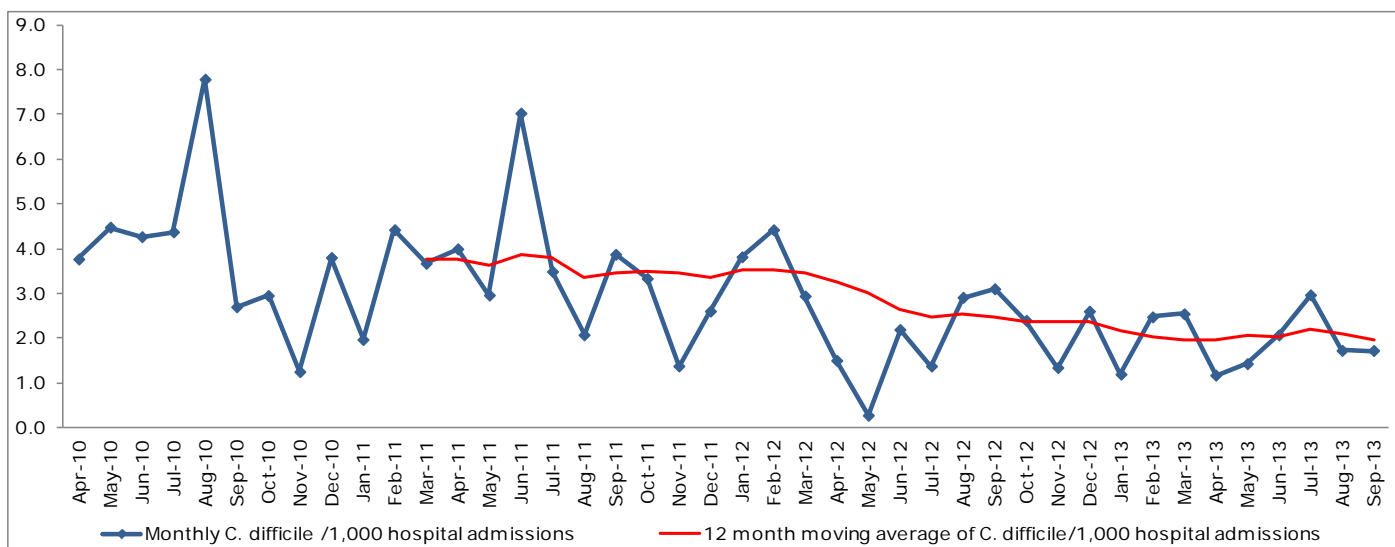
Table 3. Morrison Hospital quarterly numbers and rates of *C. difficile* per 1,000 hospital admissions, Apr 10 – Sep 13

Qtr/Yr	Number of <i>C. difficile</i>	Number of hospital admissions	<i>C. difficile</i>/ 1,000 hospital admissions
FY* Apr 10 – Mar 11	137	36538	3.75
Apr – Jun 10	38	9096	4.18
Jul - Sep 10	43	8764	4.91
Oct – Dec 10	24	9146	2.62
Jan – Mar 11	32	9532	3.36
FY Apr 11 – Mar 12	142	41091	3.46
Apr – Jun 11	46	9908	4.64
Jul - Sep 11	32	10176	3.14
Oct – Dec 11	26	10689	2.43
Jan – Mar 12	38	10318	3.68
FY Apr 12 – Mar 13	82	41454	1.98
Apr – Jun 12	13	10153	1.28
Jul - Sep 12	26	10616	2.45
Oct – Dec 12	22	10559	2.08
Jan – Mar 13	21	10126	2.07
FY Apr 13 – Mar 14**			
Apr – Jun 13	16	10292	1.55
Jul - Sep 13	23	10673	2.15

*FY = Financial Year

**Data for FY Apr 13 – Mar 14 are provisional

Figure 2. Morriston Hospital monthly and 12 month moving average rates of *C. difficile* per 1,000 hospital admissions, Apr 10 – Sep 13*



*12 month moving average rates are shown from Mar 11 as this is when the first full FY of data is complete

Abertawe Bro Morgannwg University
Health Board

Neath Port Talbot Hospital *C. difficile*, Apr – Sep 13

- 9 cases of *C. difficile* have been reported for the 6 month period in this hospital. This is an 80.00% increase in numbers compared to the equivalent period last year. The rate of *C. difficile* per 1,000 hospital admissions has increased by 288.17%, from 1.39 to 5.40. (Table 1.)
- Compared to Apr – Sep 10, there has been a 65.38% decrease in the number of *C. difficile* and an 18.53% decrease in the rate of *C. difficile* per 1,000 hospital admissions in this hospital. (Table 4.)
- The rate of *C. difficile* in this hospital is not significantly different from the rates for the major acute hospitals in Wales for this 6 month period. (Figure 6.)
- 89% (8) of the cases were diagnosed in hospital inpatient locations. The inpatient rate is 4.80 per 1,000 hospital admissions for this period.

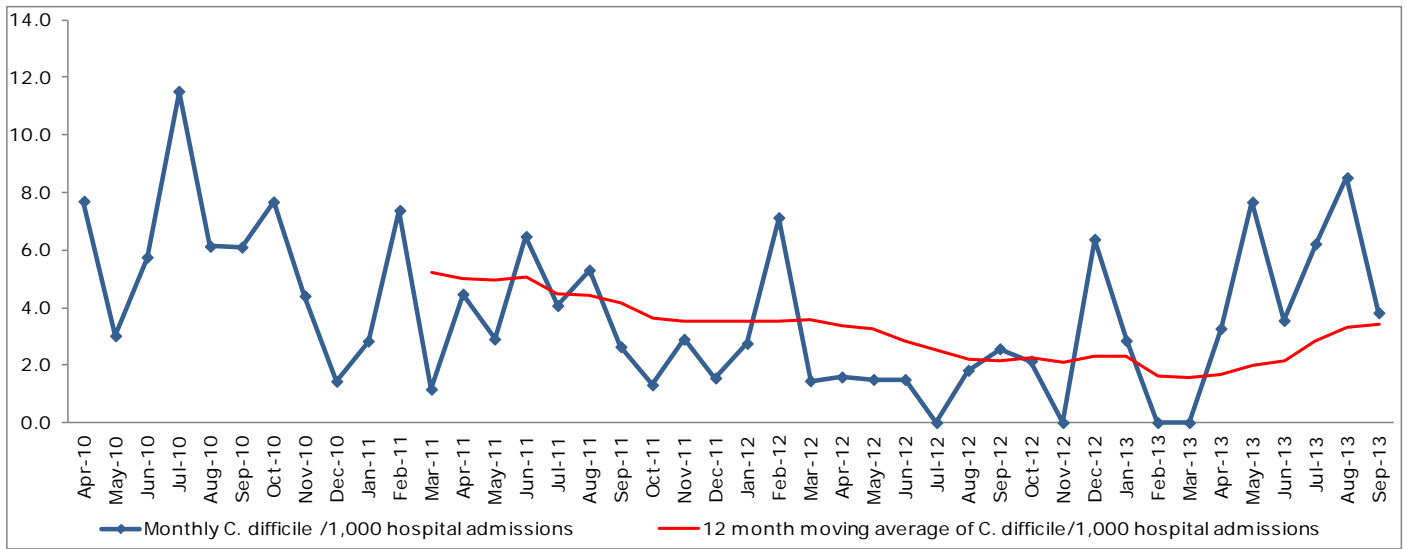
Table 4. Neath Port Talbot Hospital quarterly numbers and rates of *C. difficile* per 1,000 hospital admissions, Apr 10 – Sep 13

Otr/Yr	Number of <i>C. difficile</i>	Number of hospital admissions	<i>C. difficile</i> /1,000 hospital admissions
FY* Apr 10 – Mar 11	43	8203	5.24
Apr – Jun 10	11	2009	5.48
Jul - Sep 10	15	1917	7.82
Oct – Dec 10	9	2031	4.43
Jan – Mar 11	8	2246	3.56
FY Apr 11 – Mar 12	31	8602	3.60
Apr – Jun 11	10	2134	4.69
Jul - Sep 11	9	2252	4.00
Oct – Dec 11	4	2099	1.91
Jan – Mar 12	8	2117	3.78
FY Apr 12 – Mar 13	9	5743	1.57
Apr – Jun 12	3	1966	1.53
Jul - Sep 12	2	1631	1.23
Oct – Dec 12	3	1189	2.52
Jan – Mar 13	1	957	1.04
FY Apr 13 – Mar 14**			
Apr – Jun 13	4	849	4.71
Jul - Sep 13	5	819	6.11

*FY = Financial Year

**Data for FY Apr 13 – Mar 14 are provisional

Figure 3. Neath Port Talbot Hospital monthly and 12 month moving average rates of *C. difficile* per 1,000 hospital admissions, Apr 10 – Sep 13*



*12 month moving average rates are shown from Mar 11 as this is when the first full FY of data is complete

**Abertawe Bro Morgannwg University
Health Board**

Princess of Wales Hospital *C. difficile*, Apr – Sep 13

- 27 cases of *C. difficile* have been reported for the 6 month period in this hospital. This is a 20.59% decrease in numbers compared to the equivalent period last year. The rate of *C. difficile* per 1,000 hospital admissions has decreased by 20.10%, from 3.37 to 2.69. (Table 1.)
- Compared to Apr – Sep 10, there has been a 54.24% decrease in the number of *C. difficile* and a 54.97% decrease in the rate of *C. difficile* per 1,000 hospital admissions in this hospital. (Table 5.)
- The rate of *C. difficile* in this hospital is not significantly different from the rates for the major acute hospitals in Wales for this 6 month period. (Figure 6.)
- 93% (25) of the cases were diagnosed in hospital inpatient locations. The inpatient rate is 2.49 per 1,000 hospital admissions for this period.

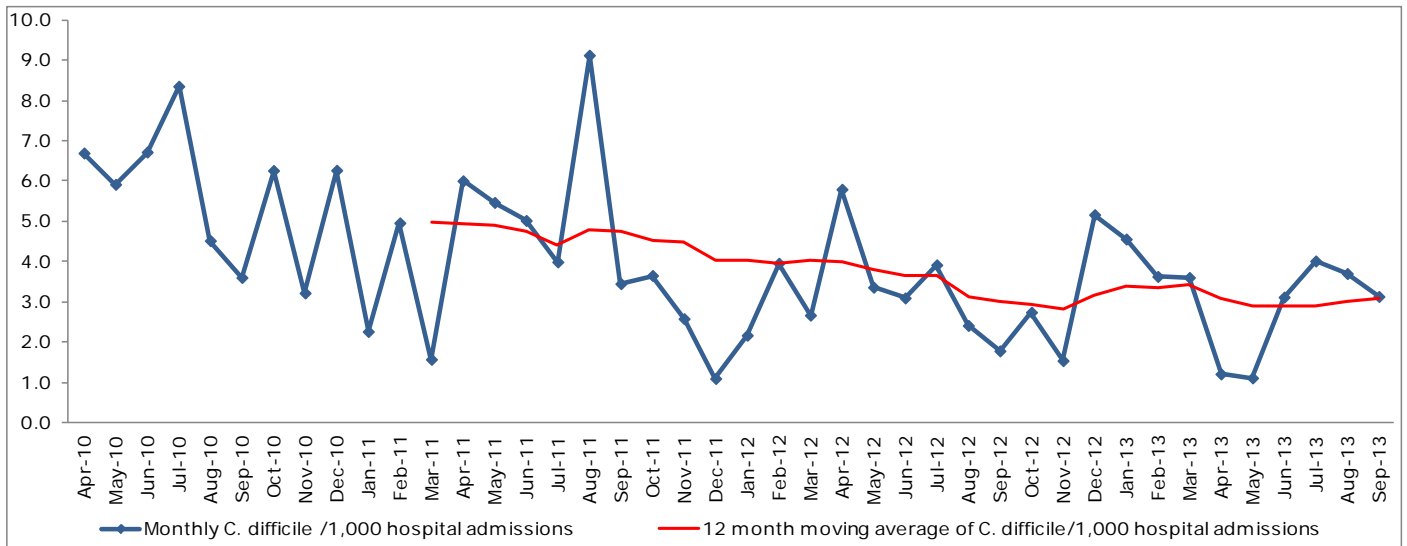
Table 5. Princess of Wales Hospital quarterly numbers and rates of *C. difficile* per 1,000 hospital admissions, Apr 10 – Sep 13

Otr/Yr	Number of <i>C. difficile</i>	Number of hospital admissions	<i>C. difficile</i> /1,000 hospital admissions
FY** Apr 10 – Mar 11	103	20698	4.98
Apr – Jun 10	32	4973	6.43
Jul - Sep 10	27	4893	5.52
Oct – Dec 10	29	5539	5.24
Jan – Mar 11	15	5293	2.83
FY Apr 11 – Mar 12	88	21769	4.04
Apr – Jun 11	30	5457	5.50
Jul - Sep 11	28	5140	5.45
Oct – Dec 11	14	5682	2.46
Jan – Mar 12	16	5490	2.91
FY Apr 12 – Mar 13	71	20683	3.43
Apr – Jun 12	20	4956	4.04
Jul - Sep 12	14	5132	2.73
Oct – Dec 12	17	5519	3.08
Jan – Mar 13	20	5076	3.94
FY Apr 13 – Mar 14***			
Apr – Jun 13	9	5062	1.78
Jul - Sep 13	18	4964	3.63

*FY = Financial Year

**Data for FY Apr 13 – Mar 14 are provisional

Figure 4. Princess of Wales Hospital monthly and 12 month moving average rates of *C. difficile* per 1,000 hospital admissions, Apr 10 – Sep 13*



*12 month moving average rates are shown from Mar 11 as this is when the first full FY of data is complete

**Abertawe Bro Morgannwg University
Health Board**

Singleton Hospital *C. difficile*, Apr – Sep 13

- 31 cases of *C. difficile* have been reported for the 6 month period in this hospital. This is a 29.17% increase in numbers compared to the equivalent period last year. The rate of *C. difficile* per 1,000 hospital admissions has decreased by 25.32%, from 3.24 to 4.06. (Table 1.)
- Compared to Apr – Sep 10, there has been a 19.23% increase in the number of *C. difficile* and a 44.31% increase in the rate of *C. difficile* per 1,000 hospital admissions in this hospital. (Table 6.)
- The rate of *C. difficile* in this hospital is not significantly different from the rates for the major acute hospitals in Wales for this 6 month period. (Figure 6.)
- All of these cases are reported to be from hospital inpatient locations.

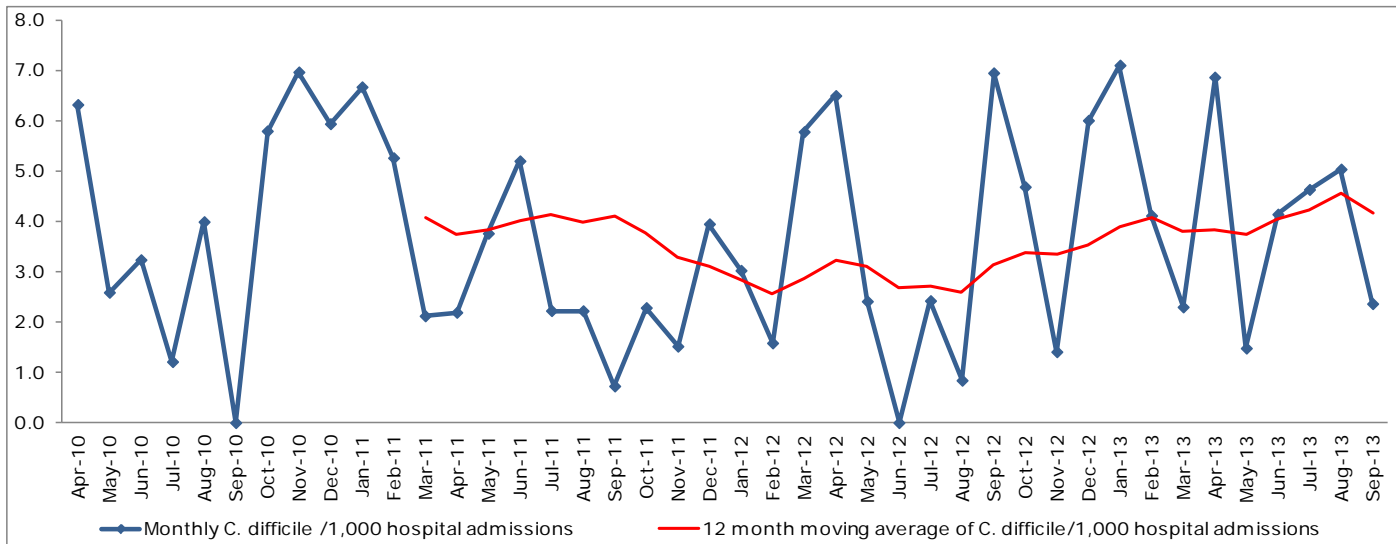
Table 6. Singleton Hospital quarterly numbers and rates of *C. difficile* per 1,000 hospital admissions, Apr 10 – Sep 13

Otr/Yr	Number of <i>C. difficile</i>	Number of hospital admissions	<i>C. difficile</i> /1,000 hospital admissions
FY* Apr 10 – Mar 11	71	17473	4.06
Apr – Jun 10	18	4517	3.98
Jul - Sep 10	8	4718	1.70
Oct – Dec 10	28	4482	6.25
Jan – Mar 11	17	3756	4.53
FY Apr 11 – Mar 12	46	15993	2.88
Apr – Jun 11	15	4047	3.71
Jul - Sep 11	7	4075	1.72
Oct – Dec 11	10	3899	2.56
Jan – Mar 12	14	3972	3.52
FY Apr 12 – Mar 13	59	15583	3.79
Apr – Jun 12	11	3679	2.99
Jul - Sep 12	13	3724	3.49
Oct – Dec 12	17	4249	4.00
Jan – Mar 13	18	3931	4.58
FY Apr 13 – Mar 14**			
Apr – Jun 13	16	3872	4.13
Jul - Sep 13	15	3758	3.99

*FY = Financial Year

**Data for FY Apr 13 – Mar 14 are provisional

Figure 5. Singleton Hospital monthly and 12 month moving average rates of *C. difficile* per 1,000 hospital admissions, Apr 10 – Sep 13*



*12 month moving average rates are shown from Mar 11 as this is when the first full FY of data is complete

Abertawe Bro Morgannwg University Health Board

Figure 6. Rate of *C. difficile* per 1,000 hospital admissions by major acute hospital, Apr 13 – Sep 13

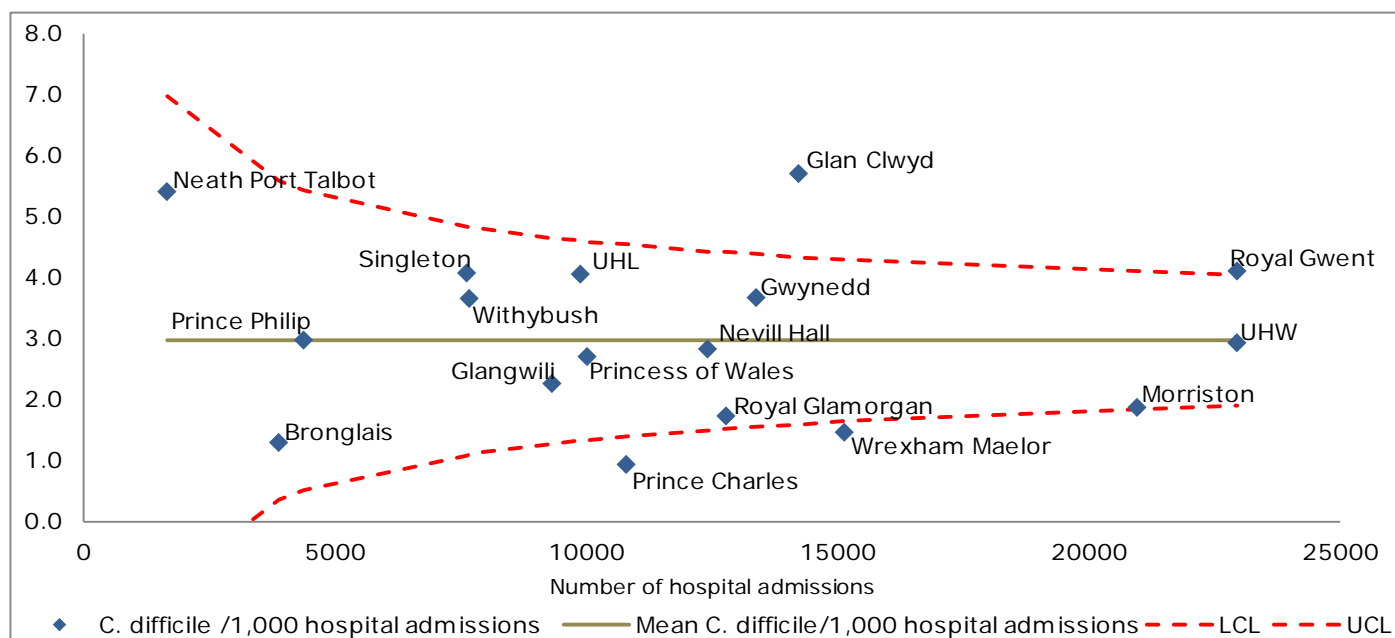


Table 7. Abertawe Bro Morgannwg Health Board, numbers of *C. difficile* in non-acute hospital locations, Apr 10 – Sep 13

Location	Number of <i>C. difficile</i>
Gellinudd Hospital	1
Gorseinon Hospital	2
Non-hospital location	18