

Aneurin Bevan Health Board

- This report covers the surveillance period Apr – Sep 13. Data for this time period is provisional. The next bi-annual report will provide confirmed data for Apr 13 – Mar 14.
- Trend data is from Apr 10, when surveillance of total *C. difficile* began in Wales.
- Numbers of *C. difficile* include cases from all patients aged 2 and over.
- All ages are included in the hospital admission and population numbers used to calculate rates.
- Hospital admission data has been supplied by NHS Wales Informatics Service (NWIS).
- Population data has been extracted from <https://statswales.wales.gov.uk/Catalogue/Population-and-Migration/Population/Estimates>

Aneurin Bevan Health Board *C. difficile*, Apr – Sep 13

- 232 cases of *C. difficile* have been reported for the 6 month period in this health board. This is a 5.45% increase in numbers compared to the equivalent period last year. The rate of *C. difficile* per 1,000 hospital admissions has increased by 5.08%, from 5.28 to 5.55. The rate of *C. difficile* per 1,000 hospital admissions in Wales has decreased by 8.71% for the same period. (Table 1.)
- Compared to Apr – Sep 10, there has been a 37.30% decrease in the number of *C. difficile* and a 36.84% decrease in the rate of *C. difficile* per 1,000 hospital admissions in this health board. The rate of *C. difficile* per 1,000 hospital admissions in Wales has decreased by 40.84%. (Table 2.)
- 56% (129) of cases were diagnosed in the 2 major acute hospitals in this health board, 25% (59) diagnosed in non-acute hospitals and 19% (43) in non-hospital locations. (Table 5.)
- 67% (156) of cases in this health board were diagnosed in hospital inpatient locations. The inpatient rate is 3.73 per 1,000 hospital admissions for this period.
- 60% (139) of *C. difficile* in this health board were in female patients and 85% (198) were in patients aged 66+ for the 6 month period.
- The rate of *C. difficile* per 100,000 population has increased by 5.45% compared to the equivalent period last year, from 75.92 to 80.06. The rate of *C. difficile* per 100,000 population in Wales has decreased by 9.62% for the same period. (Table 1.)
- Compared to Apr – Sep 10, the rate of *C. difficile* per 100,000 population has decreased by 37.64% in this health board. The rate of *C. difficile* per 100,000 population in Wales has decreased by 42.74%. (Table 2.)

Table 1. Aneurin Bevan Health Board numbers of *C. difficile*, percentage change in numbers (from Apr 12 – Sep 12) and rates per 1,000 hospital admissions and 100,000 population by major acute hospital, Apr 13 – Sep 13

Health board/hospital	Number of <i>C. difficile</i>	% change in number of <i>C. difficile</i> (Apr 12 – Sep 12)	<i>C. difficile</i> /1,000 hospital admissions	<i>C. difficile</i> /100,000 population
Nevill Hall Hospital	35	0.00% (35)	2.82	N/A
Royal Gwent Hospital	94	+4.44% (90)	4.10	N/A
Aneurin Bevan	232	+5.45% (220)	5.55	80.06
Wales	902	-9.62 (998)	4.13	58.52

Table 2. Aneurin Bevan Health Board quarterly numbers and rates of *C. difficile* per 1,000 hospital admissions and 100,000 population, Apr 10 – Sep 13

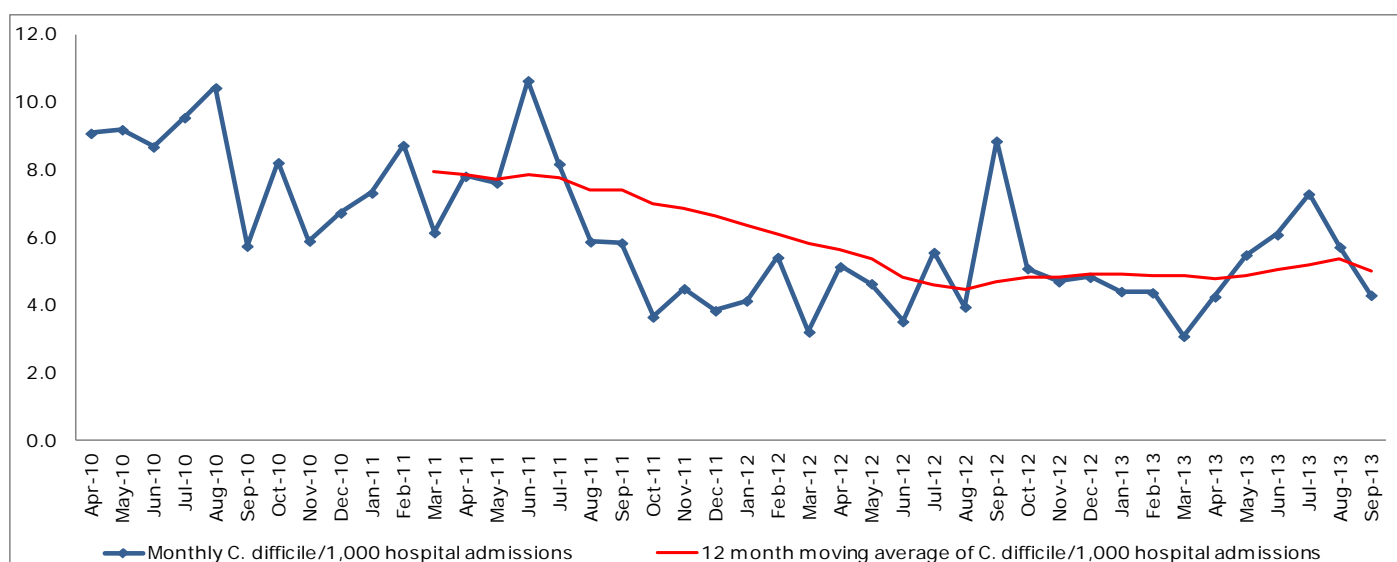
Otr/Yr	Number of <i>C. difficile</i>	Number of hospital admissions	<i>C. difficile</i> /1,000 hospital admissions	Population*	<i>C. difficile</i> /100,000 population
FY** Apr 10 – Mar 11	679	85456	7.95	574778	118.13
Apr – Jun 10	192	21361	8.99	143301	133.98
Jul - Sep 10	178	20771	8.57	144876	122.86
Oct – Dec 10	149	21461	6.94	144876	102.85
Jan – Mar 11	160	21863	7.32	141726	112.89
FY Apr 11 – Mar 12	493	84512	5.83	577077	85.43
Apr – Jun 11	176	20242	8.69	143874	122.33
Jul - Sep 11	137	20647	6.64	145455	94.19
Oct – Dec 11	87	21693	4.01	145455	59.81
Jan – Mar 12	93	21930	4.24	142293	65.36
FY Apr 12 – Mar 13	405	83473	4.85	577981	70.07
Apr – Jun 12	93	20909	4.45	144099	64.54
Jul - Sep 12	127	20771	6.11	145683	87.18
Oct – Dec 12	105	21510	4.88	145683	72.07
Jan – Mar 13	80	20283	3.94	142516	56.13
FY Apr 13 – Mar 14***					
Apr – Jun 13	111	21025	5.28	144099	77.03
Jul - Sep 13	121	20803	5.82	145683	83.06

*Quarterly population = (Total population/Number of days in year) x Number of days in quarter

**FY = Financial Year

***Data for FY Apr 13 – Mar 14 are provisional

Figure 1. Aneurin Bevan Health Board monthly and 12 month moving average rates of *C. difficile* per 1,000 hospital admissions, Apr 10 – Sep 13*



*12 month moving average rates are shown from Mar 11 as this is when the first full FY of data is complete

Nevill Hall Hospital *C. difficile*, Apr – Sep 13

- 35 cases of *C. difficile* have been reported for the 6 month period in this hospital. This is the same number as for the equivalent period last year. The rate of *C. difficile* per 1,000 hospital admissions has increased by 3.68%, from 2.72 to 2.82. (Table 1.)
- Compared to Apr – Sep 10, there has been a 31.37% decrease in the number of *C. difficile* and a 27.06% decrease in the rate of *C. difficile* per 1,000 hospital admissions in this hospital. (Table 3.)
- The rate of *C. difficile* in this hospital is not significantly different from the rates for the major acute hospitals in Wales for this 6 month period. (Figure 4.)
- 74% (26) of the cases were diagnosed in hospital inpatient locations. The inpatient rate is 2.09 per 1,000 hospital admissions for this period.

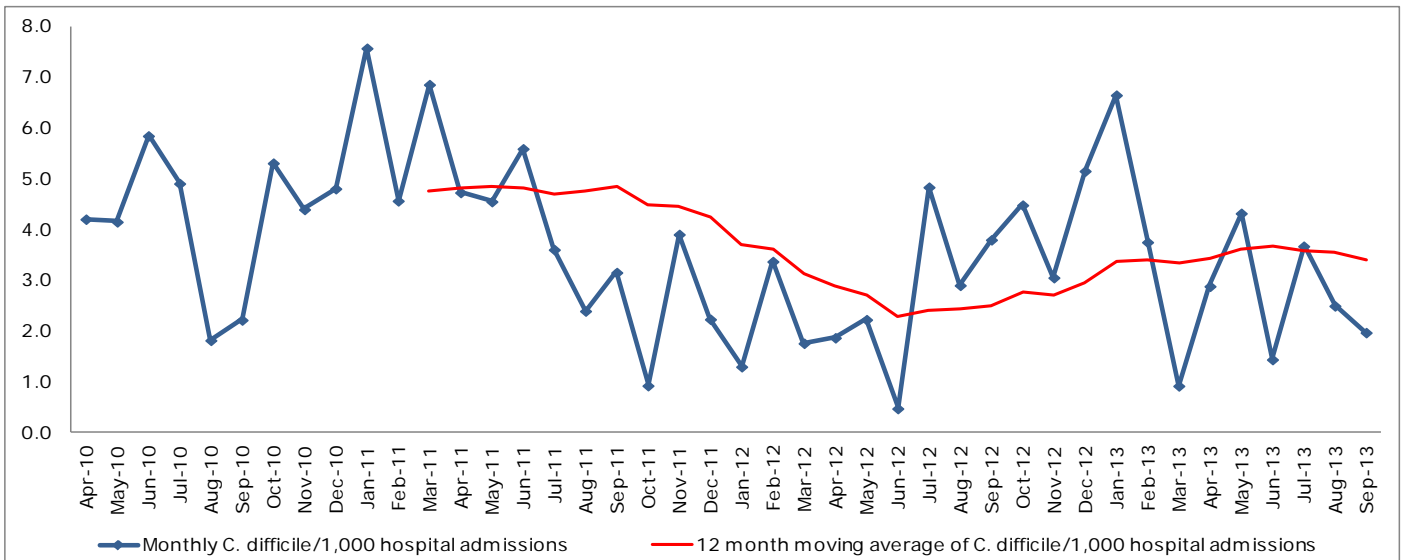
Table 3. Nevill Hall Hospital quarterly numbers and rates of *C. difficile* per 1,000 hospital admissions, Apr 10 – Sep 13

Qtr/Yr	Number of <i>C. difficile</i>	Number of hospital admissions	<i>C. difficile</i>/ 1,000 hospital admissions
FY* Apr 10 – Mar 11	129	27078	4.76
Apr – Jun 10	31	6526	4.75
Jul - Sep 10	20	6676	3.00
Oct – Dec 10	33	6818	4.84
Jan – Mar 11	45	7058	6.38
FY Apr 11 – Mar 12	82	26267	3.12
Apr – Jun 11	32	6452	4.96
Jul - Sep 11	20	6512	3.07
Oct – Dec 11	16	6673	2.40
Jan – Mar 12	14	6630	2.11
FY Apr 12 – Mar 13	85	25494	3.33
Apr – Jun 12	10	6436	1.55
Jul - Sep 12	25	6439	3.88
Oct – Dec 12	28	6650	4.21
Jan – Mar 13	22	5969	3.69
FY Apr 13 – Mar 14**			
Apr – Jun 13	18	6228	2.89
Jul - Sep 13	17	6194	2.74

*FY = Financial Year

**Data for FY Apr 13 – Mar 14 are provisional

Figure 2. Nevill Hall Hospital monthly and 12 month moving average rates of *C. difficile* per 1,000 hospital admissions, Apr 10 – Sep 13*



*12 month moving average rates are shown from Mar 11 as this is when the first full FY of data is complete

Royal Gwent Hospital *C. difficile*, Apr – Sep 13

- 94 cases of *C. difficile* have been reported for the 6 month period in this hospital. This is a 4.44% increase in numbers compared to the equivalent period last year. The rate of *C. difficile* per 1,000 hospital admissions has increased by 1.91%, from 4.02 to 4.10. (Table 1.)
- Compared to Apr – Sep 10, there has been a 46.29% decrease in the number of *C. difficile* and a 43.73% decrease in the rate of *C. difficile* per 1,000 hospital admissions in this hospital. (Table 4.)
- The rate of *C. difficile* in this hospital is significantly higher than the rates for the major acute hospitals in Wales for this 6 month period.
- 84% (79) of the cases were diagnosed in hospital inpatient locations. The inpatient rate is 3.44 per 1,000 hospital admissions for this period.

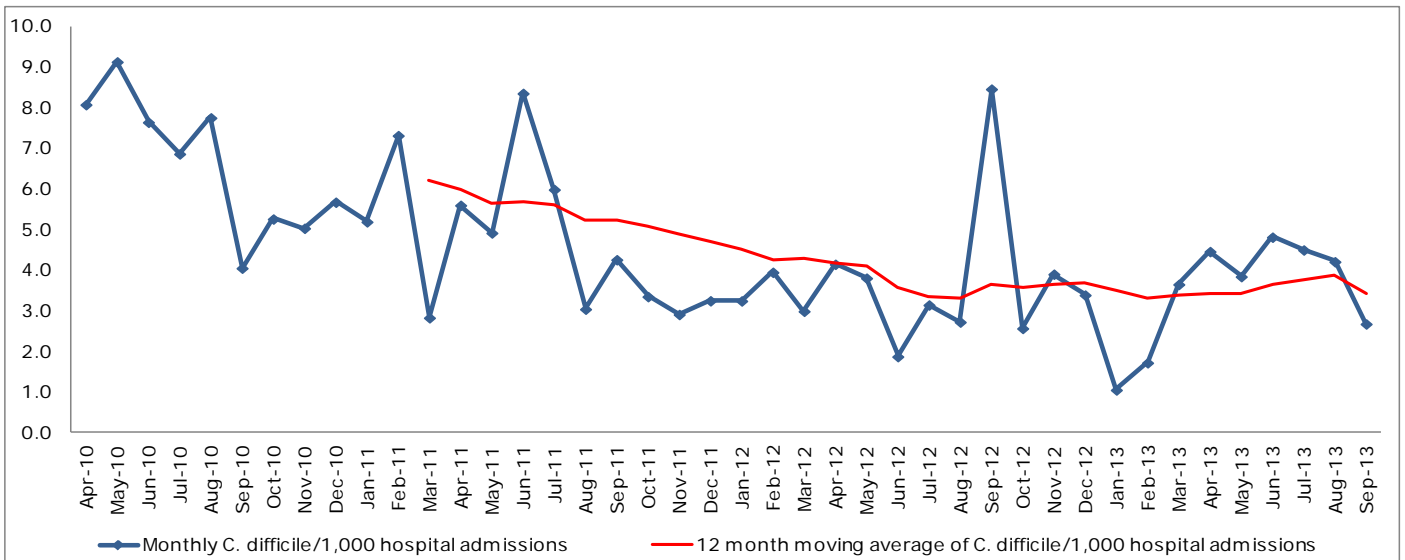
Table 4. Royal Gwent Hospital quarterly numbers and rates of *C. difficile* per 1,000 hospital admissions, Apr 10 – Sep 13

Qtr/Yr	Number of <i>C. difficile</i>	Number of hospital admissions	<i>C. difficile</i>/ 1,000 hospital admissions
FY* Apr 10 – Mar 11	301	48565	6.20
Apr – Jun 10	102	12302	8.29
Jul - Sep 10	73	11744	6.22
Oct – Dec 10	65	12206	5.33
Jan – Mar 11	61	12313	4.95
FY Apr 11 – Mar 12	203	47266	4.29
Apr – Jun 11	72	11437	6.30
Jul - Sep 11	52	11761	4.42
Oct – Dec 11	39	12275	3.18
Jan – Mar 12	40	11793	3.39
FY Apr 12 – Mar 13	152	45002	3.38
Apr – Jun 12	37	11265	3.28
Jul - Sep 12	53	11131	4.76
Oct – Dec 12	38	11547	3.29
Jan – Mar 13	24	11059	2.17
FY Apr 13 – Mar 14**			
Apr – Jun 13	50	11438	4.37
Jul - Sep 13	44	11516	3.82

*FY = Financial Year

**Data for FY Apr 13 – Mar 14 are provisional

Figure 3. Royal Gwent Hospital monthly and 12 month moving average rates of *C. difficile* per 1,000 hospital admissions, Apr 10 – Sep 13*



*12 month moving average rates are shown from Mar 11 as this is when the first full FY of data is complete

Aneurin Bevan Health Board

Figure 4. Rates of *C. difficile* per 1,000 hospital admissions by major acute hospital, Apr 13 – Sep 13

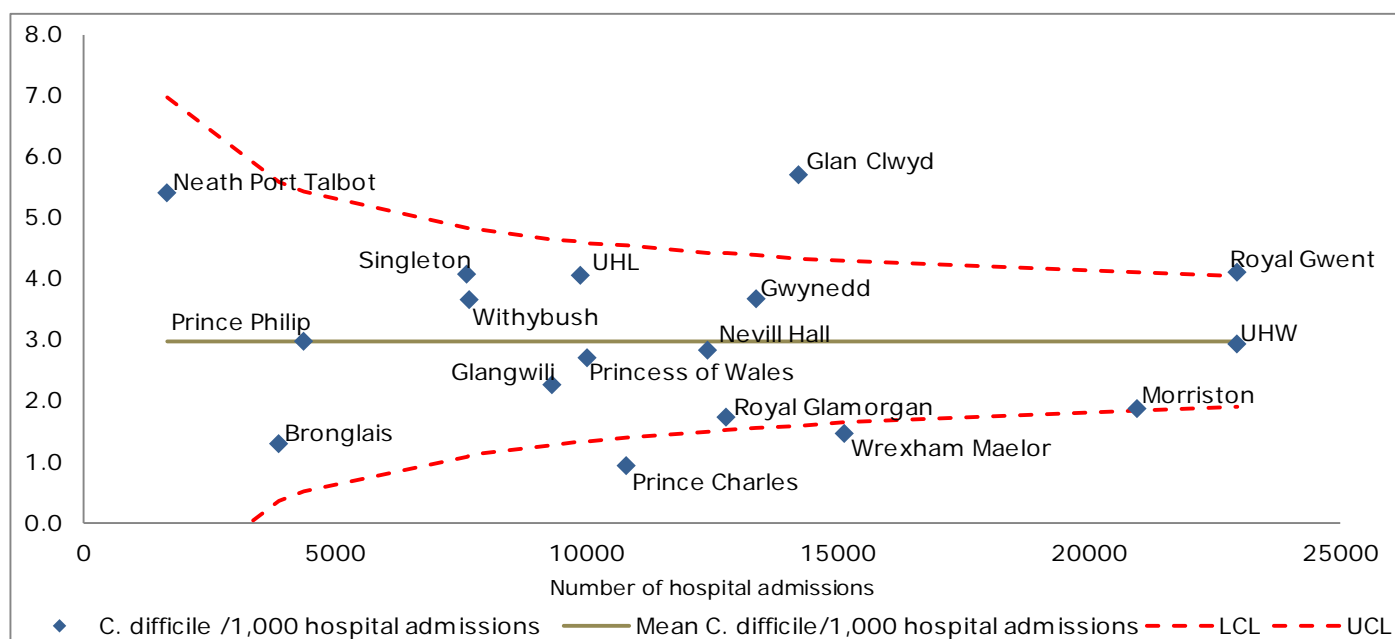


Table 5. Aneurin Bevan Health Board, numbers of *C. difficile* in non-acute hospital locations, Apr 10 – Sep 13

Location	Number of <i>C. difficile</i>
Chepstow Community Hospital	3
County Hospital	13
Monnow Vale Hospital	3
Redwood Memorial Hospital	1
St Woolos Hospital	1
Ysbyty Aneurin Bevan	21
Ysbyty Ystrad Fawr	17
Non-hospital location	43
Unknown location	1