



GIG
CYMRU
NHS
WALES

Iechyd Cyhoeddus
Cymru
Public Health
Wales

Surveillance: *Clostridium difficile* (*C. difficile*) and *Staphylococcus aureus* bacteraemia (MRSA and MSSA)

Report: Bi-annual report

Time period: 1st April to 30th September 2015

Health Board: Abertawe Bro Morgannwg (ABM) University Health Board

Content:
Pg 2 – *C. difficile*
Pg 16 – MRSA bacteraemia
Pg 31 – MSSA bacteraemia

Issued by: Welsh Healthcare Associated Infection Programme (WHAIP)

Issue date: 27th November 2015

1. *Clostridium difficile* (*C. difficile*)

C. difficile surveillance notes for interpretation

- This report presents data on numbers of *C. difficile* in Wales from April to September 2015, with trend data from April 2010.
- Data is mainly collected via Datastore, a data warehouse system used by all microbiology laboratories in Wales. This data is supplemented manually with *C. difficile* specimens from patients in Powys Teaching Health Board where the laboratory used for processing the specimen is in England.
- Data is extracted for the surveillance scheme using the following criteria:
 - The patient is at least 2 years old
 - The sample was not taken from a patient in a private hospital, a privately run dialysis unit or post-mortem
 - The sample had a positive *C. difficile* toxin test, if a single test (either a toxin A and B enzyme immunoassay or a neutralised cell toxicity assay) protocol was in use in the laboratory at the time the investigation was carried out, or a positive glutamate dehydrogenase (GDH) assay combined with a positive *C. difficile* toxin enzyme immunoassay, if a two-stage testing protocol was in use in the laboratory at the time the investigation was carried out.
 - Multiple positive samples from the same patient within a 28 day period are excluded as duplicates
- Hospital admission data has been supplied by NHS Wales Informatics Service (NWIS) from the Patient Episode Database for Wales (PEDW).
- Population data has been extracted from <https://statswales.wales.gov.uk/Catalogue/Population-and-Migration/Population/Estimates>.
- All ages are included in the hospital admission and population numbers used to calculate rates.
- Mid 2014 population estimates have been used to calculate the April – September 2015 population rates. These rates will be updated when the mid 2015 population estimates become available.

Wales *C. difficile*, Apr – Sep 15

- 694 cases of *C. difficile* have been reported for the 6 month period. This is a 1% increase in numbers compared to the equivalent period last year. The rate of *C. difficile* per 1,000 hospital admissions has increased by 3%, from 3.07 to 3.17. (Table 1.1.)
- Compared to the equivalent period last year, 4 of the 8 health boards/trust in Wales have achieved a reduction in numbers of *C. difficile*. (Table 1.1.)
- Compared to Apr – Sep 10, there has been a 56% decrease in the number of *C. difficile* and a 55% decrease in the rate of *C. difficile* per 1,000 hospital admissions in Wales. (Table 1.2.)
- Compared to the Apr – Sep 10, 7 of the 8 health boards/trust in Wales have achieved a reduction in numbers of *C. difficile*. (Table 1.3.) Powys Teaching Health Board had some changes in data collection methods over this time period.
- 71% (491) of cases were diagnosed in the 18 acute hospitals, 5% (38) diagnosed in non-acute hospitals and 24% (165) in non-hospital locations.
- 61% (422) of cases were diagnosed in hospital inpatient locations. The inpatient rate for Wales is 1.93 per 1,000 hospital admissions for this period.
- 58% (405) of *C. difficile* were in female patients and 80% (553) were in patients aged 66+ for the 6 month period.
- The rate of *C. difficile* per 100,000 population has increased by 1% compared to the equivalent period last year, from 44.25 to 44.77. (Table 1.2.)
- Compared to Apr – Sep 10, the rate of *C. difficile* per 100,000 population has decreased by 56%. (Table 1.2.)

Table 1.1. Wales numbers of *C. difficile*, percentage change in numbers (from Apr – Sep 14 and from Apr – Sep 10) and rates per 1,000 hospital admissions and 100,000 population by health board, Apr – Sep 15

	Number of <i>C. difficile</i>	% change in number of <i>C. difficile</i> from Apr – Sep 14	% change in number of <i>C. difficile</i> from Apr – Sep 10	<i>C. difficile</i> / 1,000 hospital admissions	<i>C. difficile</i> /100,000 population
ABM	152	+6% (143)	-32% (224)	3.64	57.97
Aneurin Bevan	103	-10% (115)	-72% (370)	2.35	35.40
Betsi Cadwaladr	202	+14% (177)	-50% (401)	4.26	58.05
Cardiff and Vale	82	-20% (103)	-77% (352)	2.59	33.93
Cwm Taf	38	-37% (60)	-60% (96)	1.48	25.61
Hywel Dda	101	+36% (74)	-2% (103)	3.77	52.46
Powys Teaching	12	+33% (9)	+71% (7)	15.15	18.04
Velindre	4	-20% (5)	-60% (10)	4.42	N/A
Wales	694	+1% (686)	-56% (1563)	3.17	44.77
Wales average	87	0% (86)	-35% (195)	4.71	40.21
Wales median	92	-2% (89)	-55% (164)	3.70	35.40

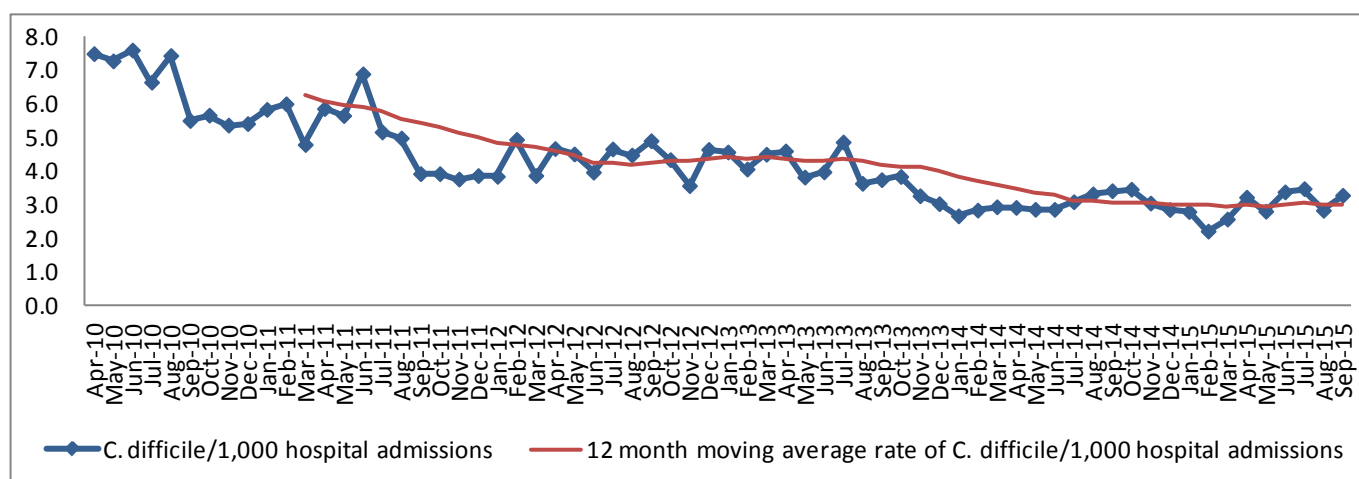
Wales

Table 1.2. Wales numbers and rates of *C. difficile* per 1,000 hospital admissions and 100,000 population, Apr 10 – Sep 15

	Number of <i>C. difficile</i>	Number of hospital admissions	<i>C. difficile</i> / 1,000 hospital admissions	Population*	<i>C. difficile</i> / 100,000 population
Apr – Sep 15	694	219069	3.17	1550254	44.77
Sep 15	121	36947	3.27	254140	47.61
Aug 15	99	34989	2.83	262611	37.70
Jul 15	132	38022	3.47	262611	50.26
Jun 15	126	37330	3.38	254140	49.58
May 15	101	36047	2.80	262611	38.46
Apr 15	115	35734	3.22	254140	45.25
2014/15 FY	1318	446598	2.95	3092036	42.63
Apr – Sep 14	686	223490	3.07	1550254	44.25
2013/14 FY	1577	437247	3.61	3082412	51.16
Apr – Sep 13	901	219353	4.11	1545428	58.30
2012/13 FY	1934	439792	4.40	3074067	62.91
Apr – Sep 12	998	220574	4.52	1541245	64.75
2011/12 FY	2142	455772	4.70	3063758	69.91
Apr – Sep 11	1214	224821	5.40	1536076	79.03
Apr – Dec 10	2795	448561	6.23	3049971	91.64
Apr – Sep 10	1563	223855	6.98	1529164	102.21

*Monthly population = (Total population/Number of days in year) x Number of days in month

Figure 1.1. Wales monthly and 12 month moving average rates of *C. difficile* per 1,000 hospital admissions, Apr 10 – Sep 15*



*12 month moving average rates are shown from Mar 11 as this is when the first full FY of data is complete

**Abertawe Bro Morgannwg University
Health Board**

Abertawe Bro Morgannwg University Health Board *C. difficile*, Apr – Sep 15

- 152 cases of *C. difficile* have been reported for the 6 month period. This is a 6% increase in numbers compared to the equivalent period last year. The rate of *C. difficile* per 1,000 hospital admissions has increased by 11%, from 3.27 to 3.64. (Table 1.3.) The rate of *C. difficile* per 1,000 hospital admissions in Wales has increased by 3% for the same period.
- Compared to Apr – Sep 10, there has been a 32% decrease in the number of *C. difficile* and a 29% decrease in the rate of *C. difficile* per 1,000 hospital admissions in this health board. (Table 1.4.) The rate of *C. difficile* per 1,000 hospital admissions in Wales has decreased by 55%.
- 82% (124) of cases were diagnosed in the 4 acute hospitals in this health board, 3% (5) diagnosed in non-acute hospitals and 15% (23) in non-hospital locations. (Table 1.9.)
- 82% (117) of cases in this health board were diagnosed in hospital inpatient locations. The inpatient rate is 2.80 per 1,000 hospital admissions for this period.
- 64% (97) of *C. difficile* in this health board were in female patients and 80% (121) were in patients aged 66+ for the 6 month period.
- The rate of *C. difficile* per 100,000 population has increased by 6% compared to the equivalent period last year, from 54.53 to 57.97. (Table 1.3.) The rate of *C. difficile* per 100,000 population in Wales has increased by 1% for the same period.
- Compared to Apr – Sep 10, the rate of *C. difficile* per 100,000 population has decreased by 33% in this health board. (Table 1.4.) The rate of *C. difficile* per 100,000 population in Wales has decreased by 56%.

Table 1.3. Abertawe Bro Morgannwg University Health Board numbers of *C. difficile*, percentage change in numbers (from Apr – Sep 14 and from Apr – Sep 10) and rates per 1,000 hospital admissions and 100,000 population by acute hospital, Apr – Sep 15

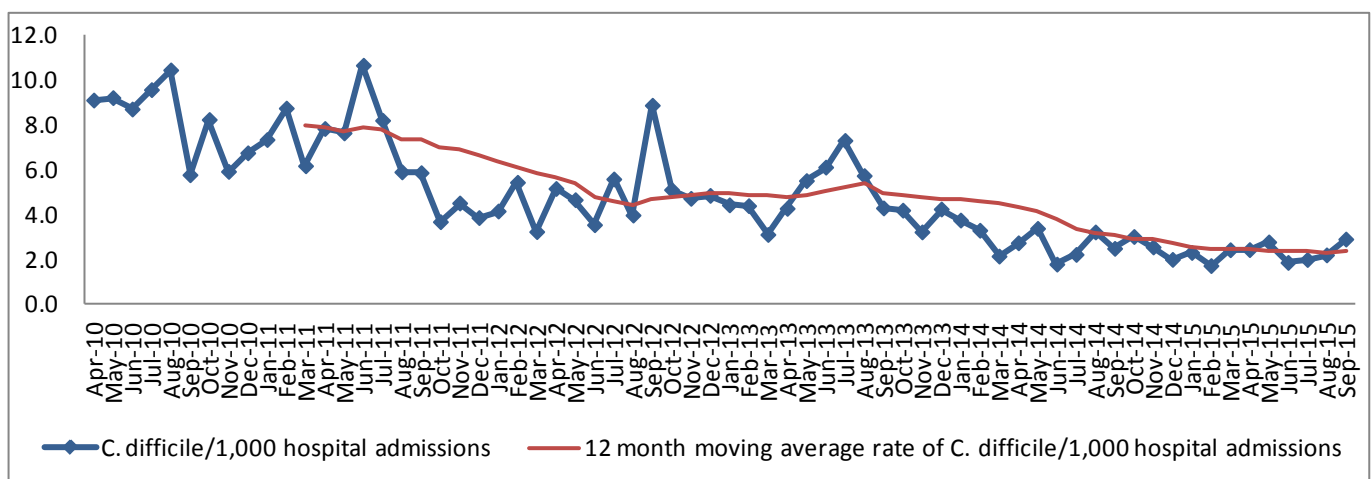
Health board/ hospital	Number of <i>C. difficile</i>	% change in number of <i>C. difficile</i> from Apr – Sep 14	% change in number of <i>C. difficile</i> from Apr – Sep 10	<i>C. difficile</i> / 1,000 hospital admissions	<i>C. difficile</i> /100,000 population
Morrison	56	+60% (35)	-31% (81)	2.73	N/A
Neath Port Talbot	3	-40% (5)	-88% (26)	1.75	N/A
Princess of Wales	44	+13% (39)	-25% (59)	4.05	N/A
Singleton	21	-38% (34)	-19% (26)	2.88	N/A
ABM	152	+6% (143)	-32% (224)	3.64	57.97
Wales	694	+1% (686)	-56% (1563)	3.17	44.77

Table 1.4. Abertawe Bro Morgannwg University Health Board numbers and rates of *C. difficile* per 1,000 hospital admissions and 100,000 population, Apr 10 – Sep 15

	Number of <i>C. difficile</i>	Number of hospital admissions	<i>C. difficile</i> / 1,000 hospital admissions	Population*	<i>C. difficile</i> / 100,000 population
Apr – Sep 15	152	41787	3.64	262217	57.97
Sep 15	24	7211	3.33	42986	55.83
Aug 15	20	6765	2.96	44419	45.03
Jul 15	32	7305	4.38	44419	72.04
Jun 15	29	7108	4.08	42986	67.46
May 15	16	6657	2.40	44419	36.02
Apr 15	31	6741	4.60	42986	72.12
2014/15 FY	261	86195	3.03	523001	49.90
Apr – Sep 14	143	43758	3.27	262217	54.53
2013/14 FY	219	85044	2.93	520710	42.06
Apr – Sep 13	128	42490	3.01	261068	49.03
2012/13 FY	263	87341	3.01	519481	50.63
Apr – Sep 12	118	43790	2.69	260452	45.31
2011/12 FY	355	92028	3.86	517981	68.54
Apr – Sep 11	203	45459	4.47	259700	78.17
2010/11 FY	411	87896	4.68	515420	79.74
Apr – Sep 10	224	43477	5.15	258416	86.68

*Monthly population = (Total population/Number of days in year) x Number of days in month

Figure 1.2. Abertawe Bro Morgannwg University Health Board monthly and 12 month moving average rates of *C. difficile* per 1,000 hospital admissions, Apr 10 – Sep 15*



*12 month moving average rates are shown from Mar 11 as this is when the first full FY of data is complete

**Abertawe Bro Morgannwg University
Health Board**

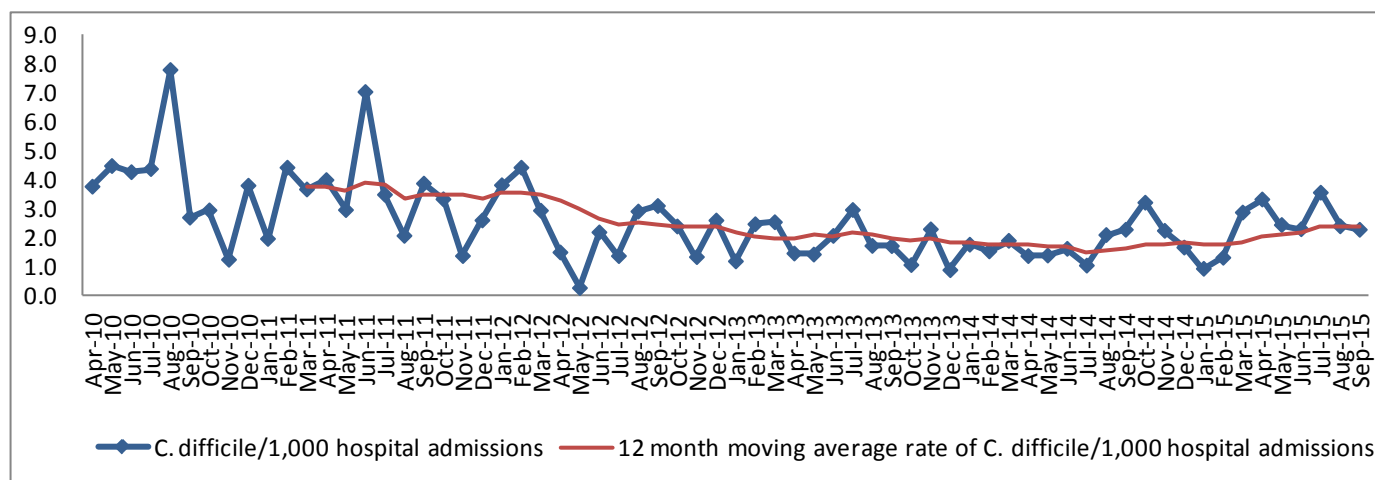
Morrison Hospital *C. difficile*, Apr – Sep 15

- 56 cases of *C. difficile* have been reported for the 6 month period. This is a 60% increase in numbers compared to the equivalent period last year. (Table 1.3.) The rate of *C. difficile* per 1,000 hospital admissions has increased by 68%, from 1.62 to 2.73. (Table 1.5.)
- Compared to the Apr – Sep 10, there has been a 31% decrease in the number of *C. difficile* and a 40% decrease in the rate of *C. difficile* per 1,000 hospital admissions in this hospital. (Table 1.5.)
- The rate of *C. difficile* in this hospital is not significantly different than the rates for the acute hospitals in Wales for this 6 month period. (Figure 1.7.)
- 93% (52) of the cases were diagnosed in hospital inpatient locations. The inpatient rate is 2.53 per 1,000 hospital admissions for this period.

Table 1.5. Morrison Hospital numbers and rates of *C. difficile* per 1,000 hospital admissions, Apr 10 – Sep 15

	Number of <i>C. difficile</i>	Number of hospital admissions	<i>C. difficile</i> /1,000 hospital admissions
Apr – Sep 15	56	20545	2.73
Sep 15	8	3506	2.28
Aug 15	8	3331	2.40
Jul 15	13	3653	3.56
Jun 15	8	3476	2.30
May 15	8	3271	2.45
Apr 15	11	3308	3.33
2014/15 FY	78	42149	1.85
Apr – Sep 14	35	21557	1.62
2013/14 FY	73	41883	1.74
Apr – Sep 13	40	20967	1.91
2012/13 FY	82	41454	1.98
Apr – Sep 12	39	20769	1.88
2011/12 FY	142	41091	3.46
Apr – Sep 11	78	20084	3.88
2010/11 FY	137	36538	3.75
Apr – Sep 10	81	17860	4.54

Figure 1.3. Morriston Hospital monthly and 12 month moving average rates of *C. difficile* per 1,000 hospital admissions, Apr 10 – Sep 15*



*12 month moving average rates are shown from Mar 11 as this is when the first full FY of data is complete

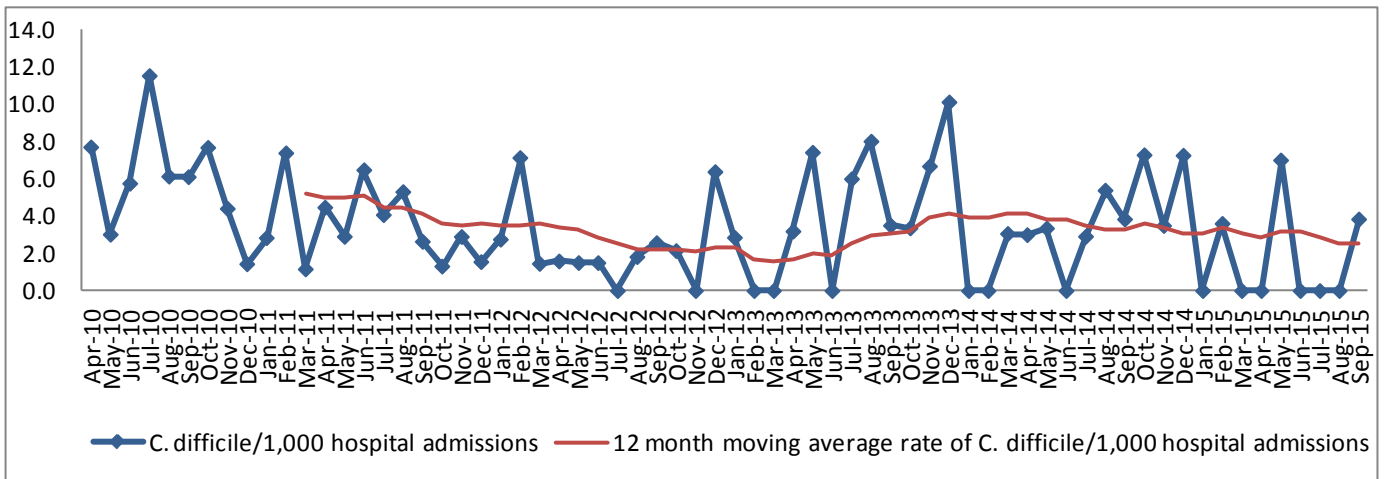
Neath Port Talbot Hospital *C. difficile*, Apr – Sep 15

- 3 cases of *C. difficile* have been reported for the 6 month period. This is a decrease of 2 in numbers compared to the equivalent period last year. (Table 1.3.) The rate of *C. difficile* per 1,000 hospital admissions has decreased by 38%, from 2.84 to 1.75. (Table 1.6.)
- Compared to the Apr – Sep 10, there has been an 88% decrease in the number of *C. difficile* and a 74% decrease in the rate of *C. difficile* per 1,000 hospital admissions in this hospital. (Table 1.6.)
- The rate of *C. difficile* in this hospital is not significantly different than the rates for the acute hospitals in Wales for this 6 month period. (Figure 1.7.)
- 100% (3) of the cases were diagnosed in hospital inpatient locations. The inpatient rate is 1.75 per 1,000 hospital admissions for this period.

Table 1.6. Neath Port Talbot Hospital numbers and rates of *C. difficile* per 1,000 hospital admissions, Apr 10 – Sep 15

	Number of <i>C. difficile</i>	Number of hospital admissions	<i>C. difficile</i> /1,000 hospital admissions
Apr – Sep 15	3	1716	1.75
Sep 15	1	261	3.83
Aug 15	0	186	0.00
Jul 15	0	348	0.00
Jun 15	0	345	0.00
May 15	2	286	6.99
Apr 15	0	290	0.00
2014/15 FY	11	3529	3.12
Apr – Sep 14	5	1762	2.84
2013/14 FY	15	3596	4.17
Apr – Sep 14	8	1745	4.58
2012/13 FY	9	5743	1.57
Apr – Sep 12	5	3597	1.39
2011/12 FY	31	8602	3.60
Apr – Sep 11	19	4386	4.33
2010/11 FY	43	8203	5.24
Apr – Sep 10	26	3926	6.62

Figure 1.4. Neath Port Talbot Hospital monthly and 12 month moving average rates of *C. difficile* per 1,000 hospital admissions, Apr 10 – Sep 15*



*12 month moving average rates are shown from Mar 11 as this is when the first full FY of data is complete

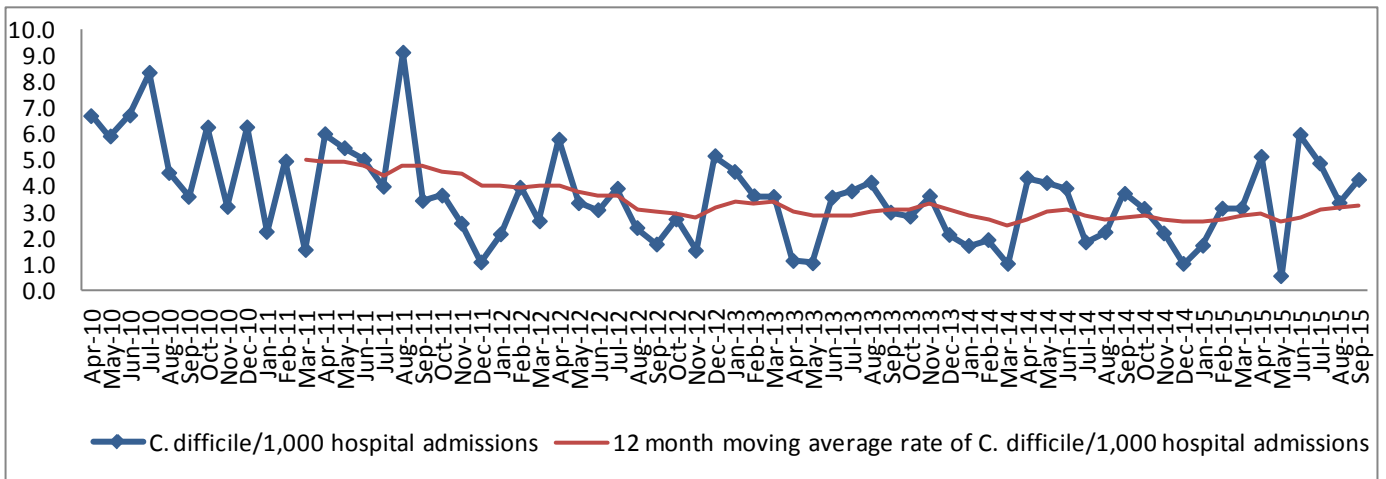
Princess of Wales Hospital *C. difficile*, Apr – Sep 15

- 44 cases of *C. difficile* have been reported for the 6 month period. This is a 13% increase in numbers compared to equivalent period last year. (Table 1.3.) The rate of *C. difficile* per 1,000 hospital admissions has increased by 21%, from 3.35 to 4.05. (Table 1.7.)
- Compared to the Apr – Sep 10, there has been a 25% decrease in the number of *C. difficile* and a 32% decrease in the rate of *C. difficile* per 1,000 hospital admissions in this hospital. (Table 1.7.)
- The rate of *C. difficile* in this hospital is significantly higher than the rates for the acute hospitals in Wales for this 6 month period. (Figure 1.7.)
- 93% (41) of the cases were diagnosed in hospital inpatient locations. The inpatient rate is 3.78 per 1,000 hospital admissions for this period.

Table 1.7. Princess of Wales Hospital numbers and rates of *C. difficile* per 1,000 hospital admissions, Apr 10 – Sep 15

	Number of <i>C. difficile</i>	Number of hospital admissions	<i>C. difficile</i>/1,000 hospital admissions
Apr – Sep 15	44	10856	4.05
Sep 15	8	1882	4.25
Aug 15	6	1781	3.37
Jul 15	9	1844	4.88
Jun 15	11	1841	5.98
May 15	1	1755	0.57
Apr 15	9	1753	5.13
2014/15 FY	65	22498	2.89
Apr – Sep 14	39	11641	3.35
2013/14 FY	53	21238	2.50
Apr – Sep 14	29	10489	2.76
2012/13 FY	71	20683	3.43
Apr – Sep 12	34	10088	3.37
2011/12 FY	88	21769	4.04
Apr – Sep 11	58	10597	5.47
2010/11 FY	103	20698	4.98
Apr – Sep 10	59	9866	5.98

Figure 1.5. Princess of Wales Hospital monthly and 12 month moving average rates of *C. difficile* per 1,000 hospital admissions, Apr 10 – Sep 15*



*12 month moving average rates are shown from Mar 11 as this is when the first full FY of data is complete

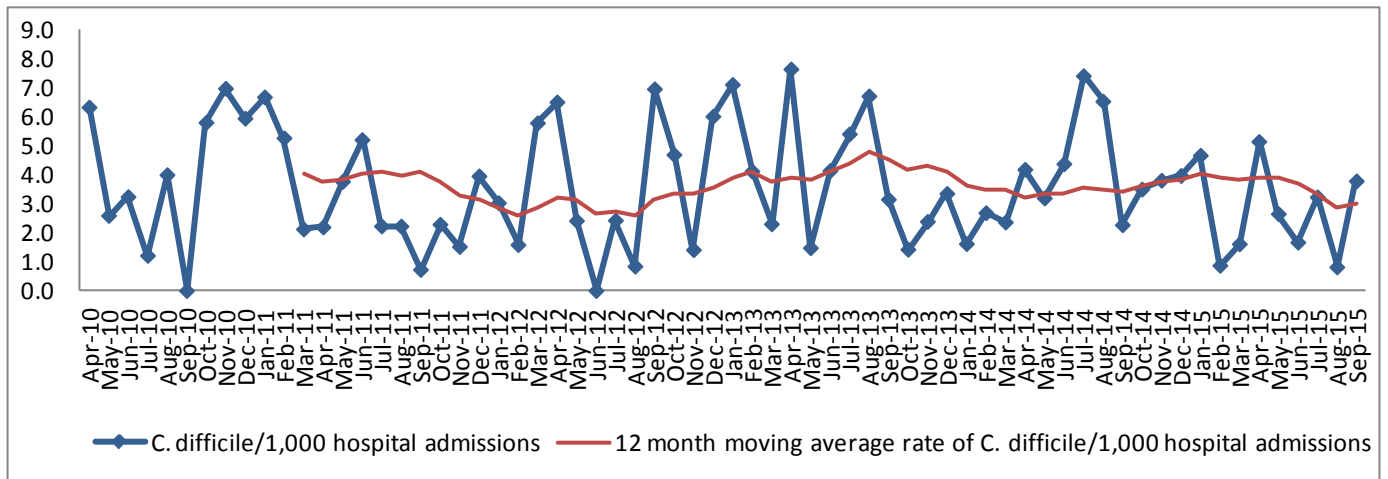
Singleton Hospital *C. difficile*, Apr – Sep 15

- 21 cases of *C. difficile* have been reported for the 6 month period. This is a 38% decrease in numbers compared to the equivalent period last year. (Table 1.3.) The rate of *C. difficile* per 1,000 hospital admissions has decreased by 38%, from 4.62 to 2.88. (Table 1.8.)
- Compared to the Apr – Sep 10, there has been a 19% decrease in the number of *C. difficile* and a 2% increase in the rate of *C. difficile* per 1,000 hospital admissions in this hospital. (Table 1.8.)
- The rate of *C. difficile* in this hospital is not significantly different than the rates for the acute hospitals in Wales for this 6 month period. (Figure 1.7.)
- 76% (16) of the cases were diagnosed in hospital inpatient locations. The inpatient rate is 2.19 per 1,000 hospital admissions for this period.

Table 1.8. Singleton Hospital numbers and rates of *C. difficile* per 1,000 hospital admissions, Apr 10 – Sep 15

	Number of <i>C. difficile</i>	Number of hospital admissions	<i>C. difficile</i> /1,000 hospital admissions
Apr – Sep 15	21	7295	2.88
Sep 15	5	1324	3.78
Aug 15	1	1227	0.81
Jul 15	4	1241	3.22
Jun 15	2	1200	1.67
May 15	3	1134	2.65
Apr 15	6	1169	5.13
2014/15 FY	58	15055	3.85
Apr – Sep 14	34	7366	4.62
2013/14 FY	53	15131	3.50
Apr – Sep 14	36	7640	4.71
2012/14 FY	59	15583	3.79
Apr – Sep 12	24	7403	3.24
2011/12 FY	46	15993	2.88
Apr – Sep 11	22	8122	2.71
2010/11 FY	71	17473	4.06
Apr – Sep 10	26	9235	2.82

Figure 1.6. Singleton Hospital monthly and 12 month moving average rates of *C. difficile* per 1,000 hospital admissions, Apr 10 – Sep 15*



*12 month moving average rates are shown from Mar 11 as this is when the first full FY of data is complete

Abertawe Bro Morgannwg University Health Board

Figure 1.7. Rates of *C. difficile* per 1,000 hospital admissions by acute hospital, Apr – Sep 15

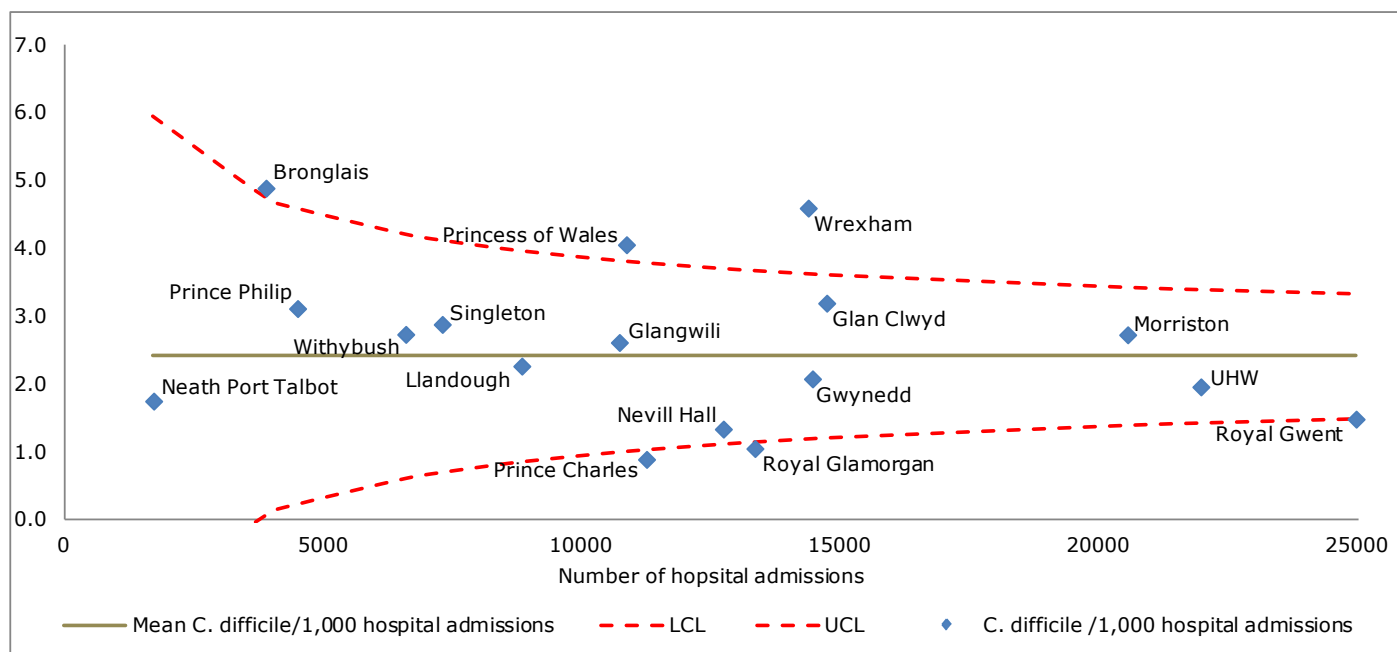


Table 1.9. Abertawe Bro Morgannwg University Health Board, numbers of *C. difficile* in non-acute hospital locations, Apr – Sep 15

Location	Number of <i>C. difficile</i>
Gorseinon Hospital	3
Glanrhyd Hospital	1
Cefn Coed Hospital	1
Non-hospital location	23

2. MRSA (meticillin-resistant *Staphylococcus aureus*) bacteraemia

MRSA bacteraemia surveillance notes for interpretation

- This report presents data on numbers of MRSA from blood cultures (bacteraemia) in Wales from April to September 2015, with trend data from April 2010 (other than for Powys Health Board where data collection started in April 2011).
- Data is mainly collected via Datastore, a data warehouse system used by all microbiology laboratories in Wales. This data is supplemented manually with MRSA bacteraemia specimens from patients in Powys Health Board where the laboratory used for processing the specimen is in England.
- Data is extracted for the surveillance scheme using the following criteria:
 - *Staphylococcus aureus* (*S. aureus*) was identified from a blood culture sample
 - The sample was not taken from a patient in a private hospital, a privately run dialysis unit or post-mortem
 - Multiple positive samples from the same patient within a 14 day period are excluded as duplicates
- *S. aureus* positive blood cultures are assigned as MRSA (meticillin-resistant *S. aureus*) or MSSA (meticillin-sensitive *S. aureus*) on the basis of sensitivity to the antibiotic flucloxacillin
- Hospital admission data has been supplied by NHS Wales Informatics Service (NWIS) from the Patient Episode Database for Wales (PEDW).
- Population data has been extracted from <https://statswales.wales.gov.uk/Catalogue/Population-and-Migration/Population/Estimates>
- Mid 2014 population estimates have been used to calculate the April – September 2015 population rates. These rates will be updated when the mid 2015 population estimates become available.

Wales MRSA bacteraemia, Apr – Sep 15

- 51 cases of MRSA bacteraemia have been reported for the 6 month period. This is a 38% decrease in numbers compared to the equivalent period last year. The rate of MRSA bacteraemia per 1,000 hospital admissions has decreased by 38%, from 0.37 to 0.23. (Table 2.1.)
- Compared to the equivalent period last year, 5 of the 8 health boards/trust in Wales have achieved a reduction in numbers of MRSA bacteraemia. 3 health boards had the same number of MRSA bacteraemia for both time periods. (Table 2.1.)
- Compared to Apr – Sep 10, there has been a 57% decrease in the number of MRSA bacteraemia and a 56% decrease in the rate of MRSA bacteraemia per 1,000 hospital admissions in Wales. (Table 2.2.)
- Compared to the Apr – Sep 10, all of the health boards/trust in Wales have achieved a reduction in numbers of MRSA bacteraemia. (Table 2.3.) Powys Teaching Health Board had some changes in data collection methods over this time period.
- All cases were diagnosed in the 18 acute hospitals.
- 61% (31) of cases were diagnosed in hospital inpatient locations. The inpatient rate for Wales is 0.14 per 1,000 hospital admissions for this period.
- 18% (9) of MRSA bacteraemia were in female patients and 73% (37) were in patients aged 66+ for the 6 month period.
- The rate of MRSA bacteraemia per 100,000 population has decreased by 38% compared to the equivalent period last year, from 5.29 to 3.29. (Table 2.2.)
- Compared to Apr – Sep 10, the rate of MRSA bacteraemia per 100,000 population has decreased by 58%. (Table 2.2.)

Table 2.1. Wales numbers of MRSA bacteraemia, percentage change in numbers (from Apr – Sep 14 and from Apr – Sep 10) and rates per 1,000 hospital admissions and 100,000 population by health board, Apr – Sep 15

	Number of MRSA bacteraemia	% change in number of MRSA bacteraemia from Apr – Sep 14	% change in number of MRSA bacteraemia from Apr – Sep 10	MRSA bacteraemia /1,000 hospital admissions	MRSA bacteraemia /100,000 population
ABM	8	-38% (13)	-72% (29)	0.19	3.05
Aneurin Bevan	10	=0% (10)	-9% (11)	0.23	3.44
Betsi Cadwaladr	16	-11% (18)	-43% (28)	0.34	4.60
Cardiff and Vale	9	-57% (21)	-59% (22)	0.28	3.72
Cwm Taf	2	-67% (6)	-82% (11)	0.08	1.35
Hywel Dda	6	-57% (14)	-63% (16)	0.22	3.12
Powys Teaching	0	=0% (0)	N/A	0.00	0.00
Velindre	0	=0% (0)	-100% (2)	0.00	N/A
Wales	51	-38% (82)	-57% (119)	0.23	3.29
Wales average	6	-29% (10)	-61% (17)	0.17	2.75
Wales median	7	-25% (12)	-63% (16)	0.21	3.12

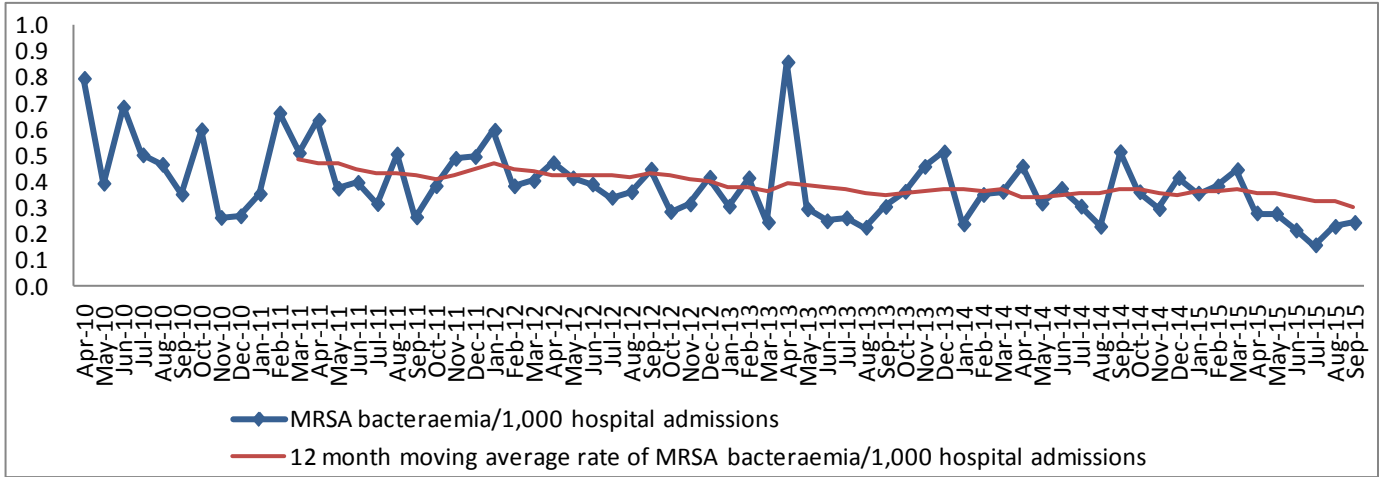
Table 2.2. Wales numbers and rates of MRSA bacteraemia per 1,000 hospital admissions and 100,000 population, Apr 10 – Sep 15

	Number of MRSA bacteraemia	Number of hospital admissions	MRSA bacteraemia/ 1,000 hospital admissions	Population*	MRSA bacteraemia/ 100,000 population
Apr – Sep 15	51	219069	0.23	1550254	3.29
Sep 15	9	36947	0.24	254140	3.54
Aug 15	8	34989	0.23	262611	3.05
Jul 15	6	38022	0.16	262611	2.28
Jun 15	8	37330	0.21	254140	3.15
May 15	10	36047	0.28	262611	3.81
Apr 15	10	35734	0.28	254140	3.93
2014/15 FY	166	446598	0.37	3092036	5.37
Apr – Sep 14	82	223490	0.37	1550254	5.29
2013/14 FY	165	437247	0.38	3082412	5.35
Apr – Sep 13	80	219353	0.36	1545428	5.18
2012/13 FY	161	439792	0.37	3074067	5.24
Apr – Sep 12	89	220574	0.40	1541245	5.77
2011/12 FY	199	455772	0.44	3063758	6.50
Apr – Sep 11	93	224821	0.41	1536076	6.05
Apr – Dec 10	218	448561	0.49	3049971	7.15
Apr – Sep 10	119	223855	0.53	1529164	7.78

*Monthly population = (Total population/Number of days in year) x Number of days in month

Wales

Figure 2.1. Wales monthly and 12 month moving average rates of MRSA bacteraemia per 1,000 hospital admissions, Apr 10 – Sep 15*



*12 month moving average rates are shown from Mar 11 as this is when the first full FY of data is complete

Abertawe Bro Morgannwg University
Health Board

Abertawe Bro Morgannwg University Health Board MRSA bacteraemia, Apr – Sep 15

- 8 cases of MRSA bacteraemia have been reported for the 6 month period. This is a 38% decrease in numbers compared to the equivalent period last year. The rate of MRSA bacteraemia per 1,000 hospital admissions has decreased by 37%, from 0.30 to 0.19. (Table 2.3.) The rate of MRSA bacteraemia per 1,000 hospital admissions in Wales has decreased by 38% for the same period.
- Compared to Apr – Sep 10, there has been a 72% decrease in the number of MRSA bacteraemia and a 72% decrease in the rate of MRSA bacteraemia per 1,000 hospital admissions in this health board. (Table 2.4.) The rate of MRSA bacteraemia per 1,000 hospital admissions in Wales has decreased by 57%.
- All (8) of cases were diagnosed in the 4 acute hospitals in this health board.
- 75% (6) of cases in this health board were diagnosed in hospital inpatient locations. The inpatient rate is 0.14 per 1,000 hospital admissions for this period.
- 13% (1) of MRSA bacteraemia in this health board were in female patients and 50% (4) were in patients aged 66+ for the 6 month period.
- The rate of MRSA bacteraemia per 100,000 population has decreased by 39% compared to the equivalent period last year, from 4.96 to 3.05. (Table 2.3.) The rate of MRSA bacteraemia per 100,000 population in Wales has decreased by 38% for the same period.
- Compared to Apr – Sep 10, the rate of MRSA bacteraemia per 100,000 population has decreased by 73% in this health board. (Table 2.4.) The rate of MRSA bacteraemia per 100,000 population in Wales has decreased by 58%.

Table 2.3. Abertawe Bro Morgannwg University Health Board numbers of MRSA bacteraemia, percentage change in numbers (from Apr – Sep 14 and from Apr – Sep 10) and rates per 1,000 hospital admissions and 100,000 population by acute hospital, Apr – Sep 15

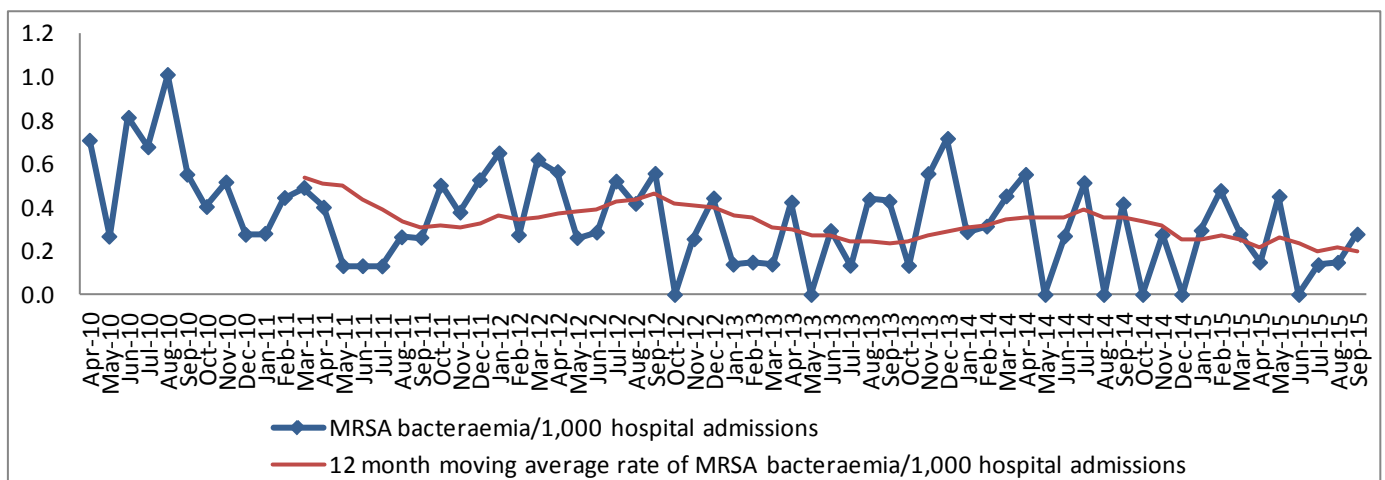
Health board/ hospital	Number of MRSA bacteraemia	% change in number of MRSA bacteraemia from Apr – Sep 14	% change in number of MRSA bacteraemia from Apr – Sep 10	MRSA bacteraemia /1,000 hospital admissions	MRSA bacteraemia /100,000 population
Morriston	1	-75% (4)	-91% (11)	0.05	N/A
Neath Port Talbot	0	0% (0)	-100% (2)	0.00	N/A
Princess of Wales	4	-43% (7)	-64% (11)	0.37	N/A
Singleton	3	+50% (2)	-40% (5)	0.41	N/A
ABM	8	-38% (13)	-72% (29)	0.19	3.05
Wales	51	-38% (82)	-57% (119)	0.23	3.29

Table 2.4. Abertawe Bro Morgannwg University Health Board numbers and rates of MRSA bacteraemia per 1,000 hospital admissions and 100,000 population, Apr 10 – Sep 15

	Number of MRSA bacteraemia	Number of hospital admissions	MRSA bacteraemia/ 1,000 hospital admissions	Population*	MRSA bacteraemia/ 100,000 population
Apr – Sep 15	8	41787	0.19	262217	3.05
Sep 15	2	7211	0.28	42986	4.65
Aug 15	1	6765	0.15	44419	2.25
Jul 15	1	7305	0.14	44419	2.25
Jun 15	0	7108	0.00	42986	0.00
May 15	3	6657	0.45	44419	6.75
Apr 15	1	6741	0.15	42986	2.33
2014/15 FY	22	86195	0.26	523001	4.21
Apr – Sep 14	13	43758	0.30	262217	4.96
2013/14 FY	29	84116	0.34	520710	5.57
Apr – Sep 13	12	42490	0.28	261068	4.60
2012/13 FY	27	87341	0.31	519481	5.20
Apr – Sep 12	19	43790	0.43	260452	7.30
2011/12 FY	33	92028	0.36	517981	6.37
Apr – Sep 11	10	45459	0.22	259700	3.85
2010/11 FY	47	87896	0.53	515420	9.12
Apr – Sep 10	29	43477	0.67	258416	11.22

*Monthly population = (Total population/Number of days in year) x Number of days in month

Figure 2.2. Abertawe Bro Morgannwg University Health Board monthly and 12 month moving average rates of MRSA bacteraemia per 1,000 hospital admissions, Apr 10 – Sep 15*



*12 month moving average rates are shown from Mar 11 as this is when the first full FY of data is complete

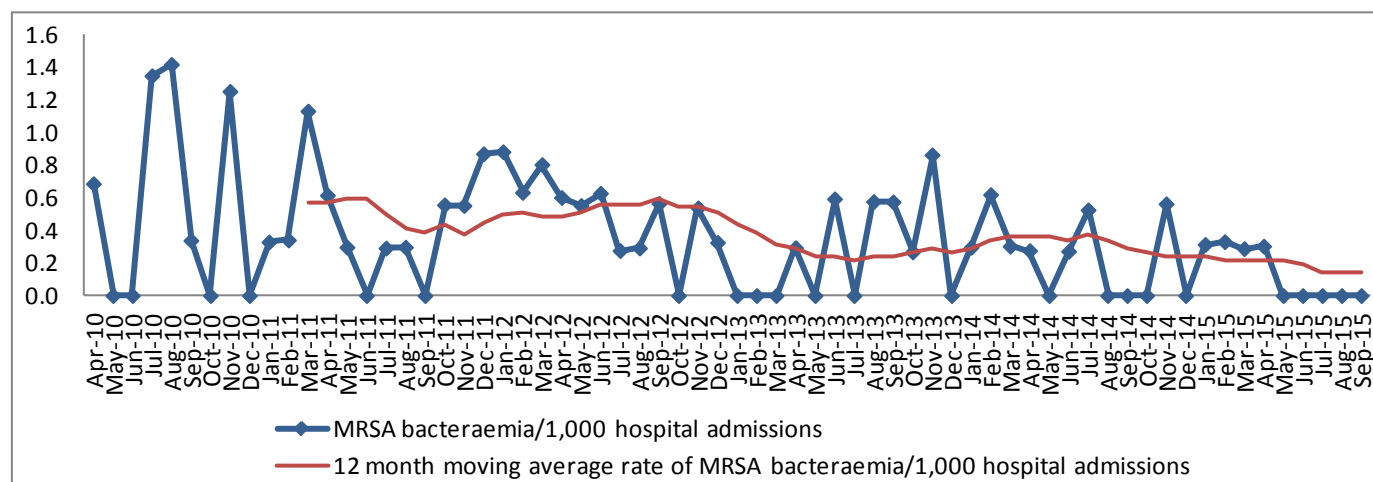
Morrison Hospital MRSA bacteraemia, Apr – Sep 15

- 1 case of MRSA bacteraemia has been reported for the 6 month period. This is a decrease of 3 in numbers compared to the equivalent period last year. (Table 2.3.) The rate of MRSA bacteraemia per 1,000 hospital admissions has decreased by 74%, from 0.19 to 0.05. (Table 2.5.)
- Compared to the Apr – Sep 10, there has been a 91% decrease in the number of MRSA bacteraemia and a 92% decrease in the rate of MRSA bacteraemia per 1,000 hospital admissions in this hospital. (Table 2.5.)
- The rate of MRSA bacteraemia in this hospital is not significantly different than the rates for the acute hospitals in Wales for this 6 month period. (Figure 2.7.)
- All of the cases were diagnosed in hospital non-inpatient locations.

Table 2.5. Morrison Hospital numbers and rates of MRSA bacteraemia per 1,000 hospital admissions, Apr 10 – Sep 15

	Number of MRSA bacteraemia	Number of hospital admissions	MRSA bacteraemia/ 1,000 hospital admissions
Apr – Sep 15	1	20545	0.05
Sep 15	0	3506	0.00
Aug 15	0	3331	0.00
Jul 15	0	3653	0.00
Jun 15	0	3476	0.00
May15	0	3271	0.00
Apr 15	1	3308	0.30
2014/15 FY	9	42149	0.21
Apr – Sep 14	4	21557	0.19
2013/14 FY	15	41496	0.36
Apr – Sep 13	7	20967	0.33
2012/13 FY	13	41454	0.31
Apr – Sep 12	10	20769	0.48
2011/12 FY	20	41091	0.49
Apr – Sep 11	5	20084	0.25
2010/11 FY	21	36538	0.57
Apr – Sep 10	11	17860	0.62

Figure 2.3. Morriston Hospital monthly and 12 month moving average rates of MRSA bacteraemia per 1,000 hospital admissions, Apr 10 – Sep 15*



*12 month moving average rates are shown from Mar 11 as this is when the first full FY of data is complete

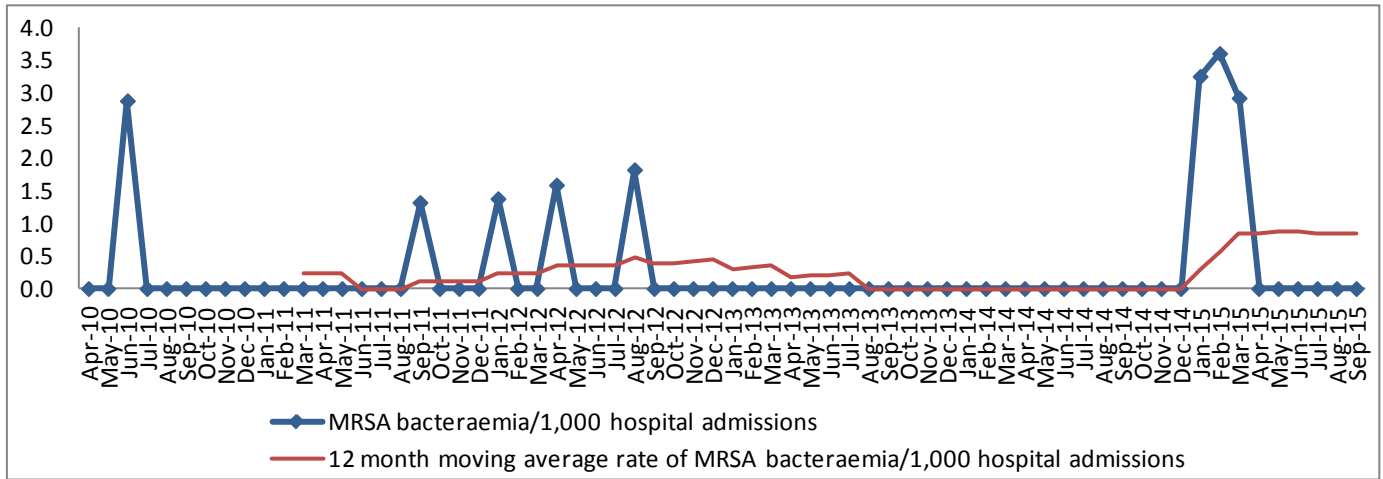
Neath Port Talbot Hospital MRSA bacteraemia, Apr – Sep 15

- 0 cases of MRSA bacteraemia have been reported for the 6 month period. This is the same number compared to the equivalent period last year. (Table 2.3.)
- Compared to the Apr – Sep 10, there has been a decrease of 2 in the number of MRSA bacteraemia in this hospital. (Table 2.6.)
- The rate of MRSA bacteraemia in this hospital is not significantly different than the rates for the acute hospitals in Wales for this 6 month period. (Figure 2.7.)

Table 2.6. Neath Port Talbot Hospital numbers and rates of MRSA bacteraemia per 1,000 hospital admissions, Apr 10 – Sep 15

	Number of MRSA bacteraemia	Number of hospital admissions	MRSA bacteraemia/ 1,000 hospital admissions
Apr – Sep 15	0	1716	0.00
Sep 15	0	261	0.00
Aug 15	0	186	0.00
Jul 15	0	348	0.00
Jun 15	0	345	0.00
May 15	0	286	0.00
Apr 15	0	290	0.00
2014/15 FY	3	3529	0.85
Apr – Sep 14	0	1762	0.00
2013/14 FY	0	3505	0.00
Apr – Sep 13	0	1745	0.00
2012/13 FY	2	5743	0.35
Apr – Sep 12	2	3597	0.56
2011/12 FY	2	8602	0.23
Apr – Sep 11	1	4386	0.23
2010/11 FY	2	8203	0.24
Apr – Sep 10	2	3926	0.51

Figure 2.4. Neath Port Talbot Hospital monthly and 12 month moving average rates of MRSA bacteraemia per 1,000 hospital admissions, Apr 10 – Sep 15*



*12 month moving average rates are shown from Mar 11 as this is when the first full FY of data is complete

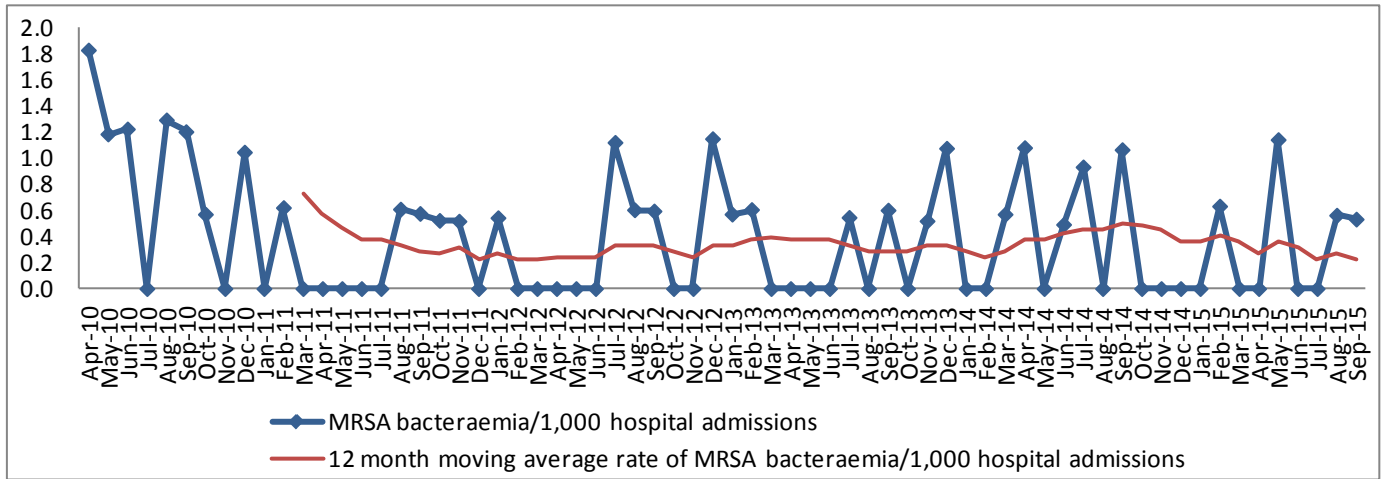
Princess of Wales Hospital MRSA bacteraemia, Apr – Sep 15

- 4 cases of MRSA bacteraemia have been reported for the 6 month period. This is a decrease of 3 in numbers compared to the equivalent period last year. (Table 2.3.) The rate of MRSA bacteraemia per 1,000 hospital admissions has decreased by 38%, from 0.6 to 0.37 (Table 2.7.)
- Compared to the Apr – Sep 10, there has been a 64% decrease in the number of MRSA bacteraemia and a 67% decrease in the rate of MRSA bacteraemia per 1,000 hospital admissions in this hospital. (Table 2.7.)
- The rate of MRSA bacteraemia in this hospital is not significantly different than the rates for the acute hospitals in Wales for this 6 month period. (Figure 2.7.)
- 100% (4) of the cases were diagnosed in hospital inpatient locations. The inpatient rate is 0.37 per 1,000 hospital admissions for this period.

Table 2.7. Princess of Wales Hospital numbers and rates of MRSA bacteraemia per 1,000 hospital admissions, Apr 10 – Sep 15

	Number of MRSA bacteraemia	Number of hospital admissions	MRSA bacteraemia/1,000 hospital admissions
Apr – Sep 15	4	10856	0.37
Sep 15	1	1882	0.53
Aug 15	1	1781	0.56
Jul 15	0	1844	0.00
Jun 15	0	1841	0.00
May 15	2	1755	1.14
Apr 15	0	1753	0.00
2014/15 FY	8	22498	0.36
Apr – Sep 14	7	11641	0.6
2013/14 FY	6	21095	0.28
Apr – Sep 13	2	10489	0.19
2012/13 FY	8	20683	0.39
Apr – Sep 12	4	10088	0.40
2011/12 FY	5	21769	0.23
Apr – Sep 11	2	10597	0.19
2010/11 FY	15	20698	0.72
Apr – Sep 10	11	9866	1.11

Figure 2.5. Princess of Wales Hospital monthly and 12 month moving average rates of MRSA bacteraemia per 1,000 hospital admissions, Apr 10 – Sep 15*



*12 month moving average rates are shown from Mar 11 as this is when the first full FY of data is complete

Abertawe Bro Morgannwg University
Health Board

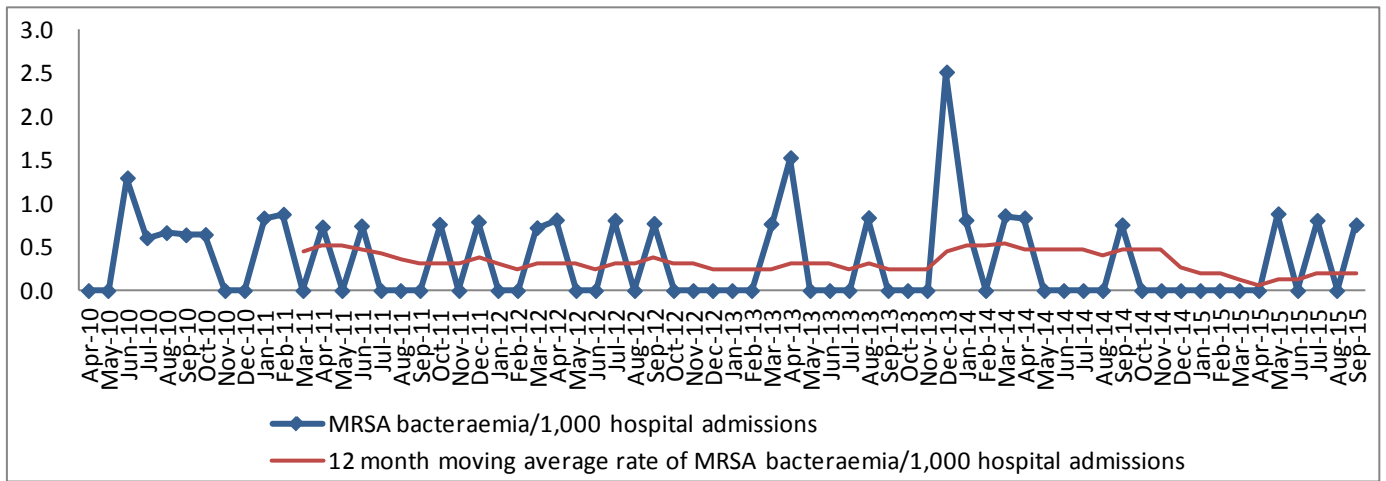
Singleton Hospital MRSA bacteraemia, Apr – Sep 15

- 3 cases of MRSA bacteraemia have been reported for the 6 month period. This is an increase of 1 in numbers compared to the equivalent period last year. (Table 2.3.) The rate of MRSA bacteraemia per 1,000 hospital admissions has increased by 52%, from 0.27 to 0.41. (Table 2.8.)
- Compared to the Apr – Sep 10, there has been a decrease of 2 in the number of MRSA bacteraemia and a 50% decrease in the rate of MRSA bacteraemia per 1,000 hospital admissions in this hospital. (Table 2.8.)
- The rate of MRSA bacteraemia in this hospital is not significantly different than the rates for the acute hospitals in Wales for this 6 month period. (Figure 2.7.)
- 66% (2) of the cases were diagnosed in hospital inpatient locations.

Table 2.8. Singleton Hospital numbers and rates of MRSA bacteraemia per 1,000 hospital admissions, Apr 10 – Sep 15

	Number of MRSA bacteraemia	Number of hospital admissions	MRSA bacteraemia/ 1,000 hospital admissions
Apr – Sep 15	3	7295	0.41
Sep 15	1	1324	0.76
Aug 15	0	1227	0.00
Jul 15	1	1241	0.81
Jun 15	0	1200	0.00
May 15	1	1134	0.88
Apr 15	0	1169	0.00
2014/15 FY	2	15055	0.13
Apr – Sep 14	2	7366	0.27
2013/14 FY	8	15017	0.53
Apr – Sep 13	3	7640	0.39
2012/13 FY	4	15583	0.26
Apr – Sep 12	3	7403	0.41
2011/12 FY	5	15993	0.31
Apr – Sep 11	2	8122	0.25
2010/11 FY	8	17473	0.46
Apr – Sep 10	5	9235	0.54

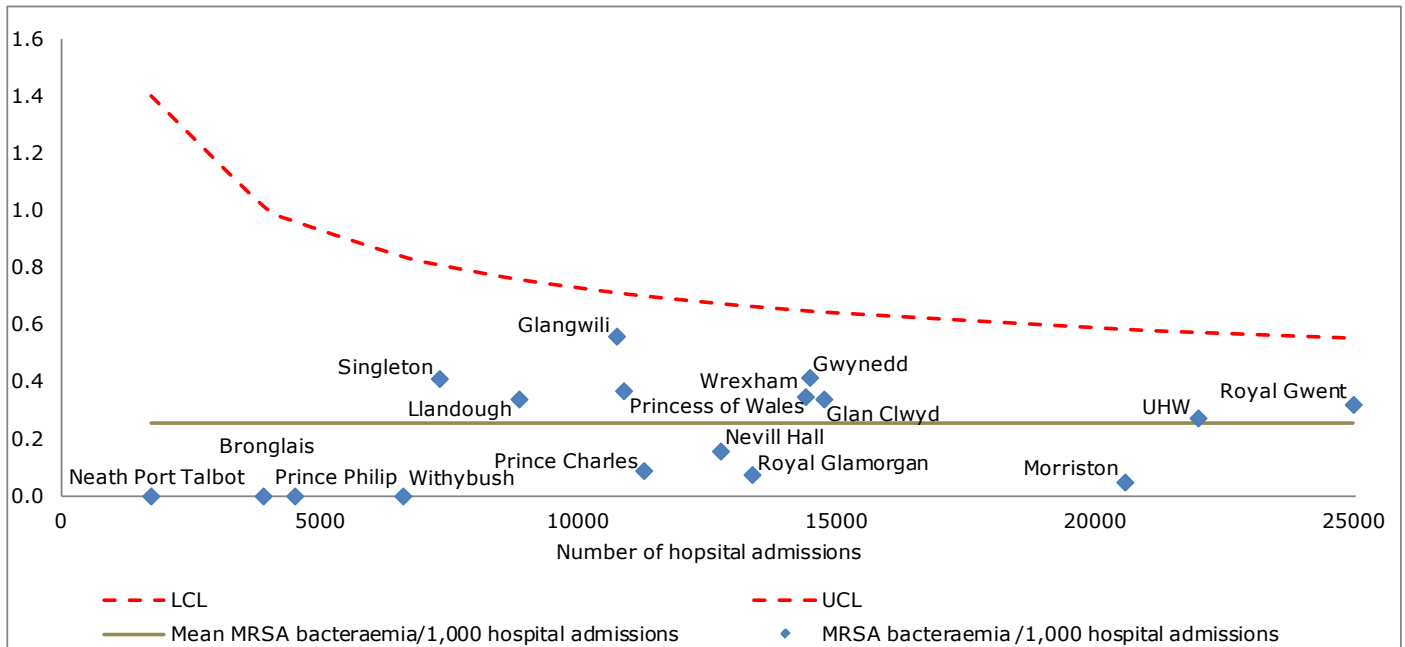
Figure 2.6. Singleton Hospital monthly and 12 month moving average rates of MRSA bacteraemia per 1,000 hospital admissions, Apr 10 – Sep 15*



*12 month moving average rates are shown from Mar 11 as this is when the first full FY of data is complete

Abertawe Bro Morgannwg University
Health Board

Figure 2.7. Rates of MRSA bacteraemia per 1,000 hospital admissions by acute hospital, Apr – Sep 15



3. MSSA (meticillin-sensitive *Staphylococcus aureus*) bacteraemia

MSSA bacteraemia surveillance notes for interpretation

- This report presents data on numbers of MSSA from blood cultures (bacteraemia) in Wales from April to September 2015, with trend data from April 2010 (other than for Powys Health Board where data collection started in April 2011).
- Data is mainly collected via Datastore, a data warehouse system used by all microbiology laboratories in Wales. This data is supplemented manually with MSSA bacteraemia specimens from patients in Powys Health Board where the laboratory used for processing the specimen is in England.
- Data is extracted for the surveillance scheme using the following criteria:
 - *Staphylococcus aureus* (*S. aureus*) was identified from a blood culture sample
 - The sample was not taken from a patient in a private hospital, a privately run dialysis unit or post-mortem
 - Multiple positive samples from the same patient within a 14 day period are excluded as duplicates
- *S. aureus* positive blood cultures are assigned as MRSA (meticillin-resistant *S. aureus*) or MSSA (meticillin-sensitive *S. aureus*) on the basis of sensitivity to the antibiotic flucloxacillin
- Hospital admission data has been supplied by NHS Wales Informatics Service (NWIS) from the Patient Episode Database for Wales (PEDW).
- Population data has been extracted from <https://statswales.wales.gov.uk/Catalogue/Population-and-Migration/Population/Estimates>
- Mid 2014 population estimates have been used to calculate the April – September 2015 population rates. These rates will be updated when the mid 2015 population estimates become available.

Wales MSSA bacteraemia, Apr – Sep 15

- 409 cases of MSSA bacteraemia have been reported for the 6 month period. This is a 5% increase in numbers compared to the equivalent period last year. The rate of MSSA bacteraemia per 1,000 hospital admissions has increased by 8%, from 1.74 to 1.87. (Table 3.1.)
- Compared to the equivalent period last year, 2 of the 8 health boards/trust in Wales have achieved a reduction in numbers of MSSA bacteraemia. (Table 3.1.)
- Compared to Apr – Sep 10, there has been a 26% increase in the number of MSSA bacteraemia and a 29% increase in the rate of MSSA bacteraemia per 1,000 hospital admissions in Wales. (Table 3.2.)
- Compared to the Apr – Sep 10, 1 of the 8 health boards/trust in Wales have achieved a reduction in numbers of MSSA bacteraemia. (Table 3.3.) Powys Teaching Health Board had some changes in data collection methods over this time period.
- 99% (403) of cases were diagnosed in the 18 acute hospitals, 1% (5) diagnosed in non-acute hospitals and <1% (1) in non-hospital locations.
- 53% (217) of cases were diagnosed in hospital inpatient locations. The inpatient rate for Wales is 0.99 per 1,000 hospital admissions for this period.
- 40% (164) of MSSA bacteraemia were in female patients and 50% (204) were in patients aged 66+ for the 6 month period.
- The rate of MSSA bacteraemia per 100,000 population has increased by 5% compared to the equivalent period last year, from 25.03 to 26.38. (Table 3.2.)
- Compared to Apr – Sep 10, the rate of MSSA bacteraemia per 100,000 population has increased by 24%. (Table 3.2.)

Table 3.1. Wales numbers of MSSA bacteraemia, percentage change in numbers (from Apr – Sep 14 and from Apr – Sep 10) and rates per 1,000 hospital admissions and 100,000 population by health board, Apr – Sep 15

	Number of MSSA bacteraemia	% change in number of MSSA bacteraemia from Apr – Sep 14	% change in number of MSSA bacteraemia from Apr – Sep 10	MSSA bacteraemia /1,000 hospital admissions	MSSA bacteraemia /100,000 population
ABM	86	+8% (80)	+54% (56)	2.06	32.80
Aneurin Bevan	46	-23% (60)	-26% (62)	1.05	15.81
Betsi Cadwaladr	70	-3% (72)	+4% (67)	1.48	20.12
Cardiff and Vale	76	+3% (74)	+25% (61)	2.40	31.45
Cwm Taf	63	+34% (47)	+125% (28)	2.45	42.46
Hywel Dda	65	+23% (53)	+35% (48)	2.42	33.76
Powys Teaching	0	0% (0)	N/A	0.00	0.00
Velindre	3	+50% (2)	=0% (3)	3.31	N/A
Wales	409	+5% (388)	+26% (325)	1.87	26.38
Wales average	51	+11% (49)	+31% (46)	1.90	25.20
Wales median	64	+5% (57)	+25% (56)	2.23	31.45

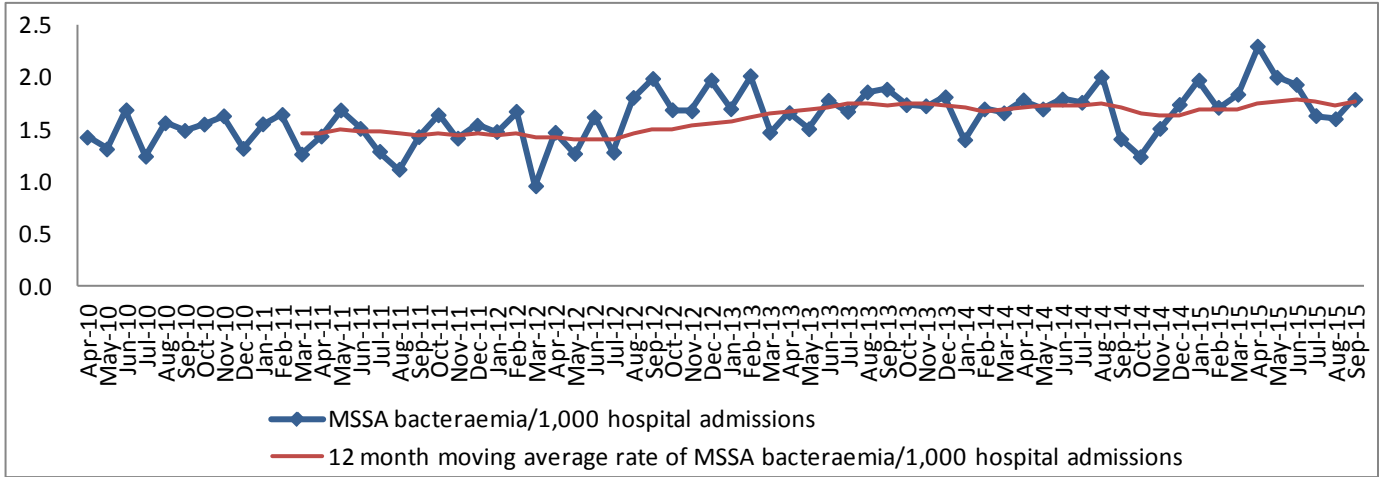
Table 3.2. Wales numbers and rates of MSSA bacteraemia per 1,000 hospital admissions and 100,000 population, Apr 10 – Sep 15

	Number of MSSA bacteraemia	Number of hospital admissions	MSSA bacteraemia/ 1,000 hospital admissions	Population*	MSSA bacteraemia/ 100,000 population
Apr – Sep 15	409	219069	1.87	1550254	26.38
Sep 15	65	36947	1.76	254140	25.58
Aug 15	56	34989	1.60	262611	21.32
Jul 15	62	38022	1.63	262611	23.61
Jun 15	72	37330	1.93	254140	28.33
May 15	72	36047	2.00	262611	27.42
Apr 15	82	35734	2.29	254140	32.27
2014/15 FY	759	446598	1.70	3092036	24.55
Apr – Sep 14	388	223490	1.74	1550254	25.03
2013/14 FY	751	437247	1.72	3082412	24.36
Apr – Sep 13	378	219353	1.72	1545428	24.46
2012/13 FY	728	439792	1.66	3074067	23.68
Apr – Sep 12	345	220574	1.56	1541245	22.38
2011/12 FY	651	455772	1.43	3063758	21.25
Apr – Sep 11	317	224821	1.41	1536076	20.64
Apr – Dec 10	659	448561	1.47	3049971	21.61
Apr – Sep 10	325	223855	1.45	1529164	21.25

*Monthly population = (Total population/Number of days in year) x Number of days in month

Wales

Figure 3.1. Wales monthly and 12 month moving average rates of MSSA bacteraemia per 1,000 hospital admissions, Apr 10 – Sep 15*



*12 month moving average rates are shown from Mar 11 as this is when the first full FY of data is complete

Abertawe Bro Morgannwg University
Health Board

Abertawe Bro Morgannwg University Health Board MSSA bacteraemia, Apr – Sep 15

- 86 cases of MSSA bacteraemia have been reported for the 6 month period. This is an 8% increase in numbers compared to the equivalent period last year. The rate of MSSA bacteraemia per 1,000 hospital admissions has increased by 13%, from 1.83 to 2.06. (Table 3.3.) The rate of MSSA bacteraemia per 1,000 hospital admissions in Wales has increased by 8% for the same period.
- Compared to Apr – Sep 10, there has been a 54% increase in the number of MSSA bacteraemia and a 60% increase in the rate of MSSA bacteraemia per 1,000 hospital admissions in this health board. (Table 3.4.) The rate of MSSA bacteraemia per 1,000 hospital admissions in Wales has increased by 29%.
- 99% (85) of cases were diagnosed in the 4 acute hospitals in this health board. 1 location was not specified.
- 56% (48) of cases in this health board were diagnosed in hospital inpatient locations. The inpatient rate is 1.15 per 1,000 hospital admissions for this period.
- 28% (24) of MSSA bacteraemia in this health board were in female patients and 50% (43) were in patients aged 66+ for the 6 month period.
- The rate of MSSA bacteraemia per 100,000 population has increased by 7% compared to the equivalent period last year, from 30.51 to 32.80. (Table 3.3.) The rate of MSSA bacteraemia per 100,000 population in Wales has increased by 5% for the same period.
- Compared to the Apr – Sep 10, the rate of MSSA bacteraemia per 100,000 population has increased by 51% in this health board. (Table 3.4.) The rate of MSSA bacteraemia per 100,000 population in Wales has increased by 24%.

Table 3.3. Abertawe Bro Morgannwg University Health Board numbers of MSSA bacteraemia, percentage change in numbers (from Apr – Sep 14 and from Apr – Sep 10) and rates per 1,000 hospital admissions and 100,000 population by acute hospital, Apr – Sep 15

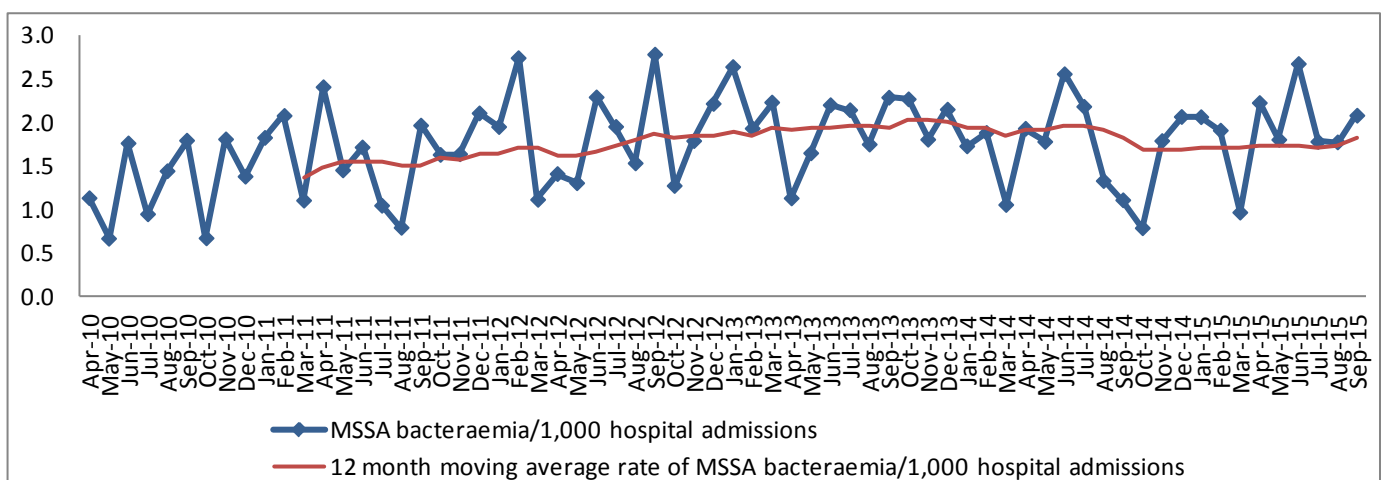
Health board/ hospital	Number of MSSA bacteraemia	% change in number of MSSA bacteraemia from Apr – Sep 14	% change in number of MSSA bacteraemia from Apr – Sep 10	MSSA bacteraemia /1,000 hospital admissions	MSSA bacteraemia /100,000 population
Morriston	45	-6% (48)	+88% (24)	2.19	N/A
Neath Port Talbot	0	-100% (2)	-100% (3)	0.00	N/A
Princess of Wales	19	+46% (13)	+12% (17)	1.75	N/A
Singleton	21	+24% (17)	+75% (12)	2.88	N/A
ABM	86	+8% (80)	+54% (56)	2.06	32.80
Wales	409	+5% (388)	+26% (325)	1.87	26.38

Table 3.4. Abertawe Bro Morgannwg University Health Board numbers and rates of MSSA bacteraemia per 1,000 hospital admissions and 100,000 population, Apr 10 – Sep 15

	Number of MSSA bacteraemia	Number of hospital admissions	MSSA bacteraemia/ 1,000 hospital admissions	Population*	MSSA bacteraemia/ 100,000 population
Apr – Sep 15	86	41787	2.06	262217	32.80
Apr 15	15	7211	2.08	42986	34.89
Aug 15	12	6765	1.77	44419	27.02
Jul 15	13	7305	1.78	44419	29.27
Jun 15	19	7108	2.67	42986	44.20
May 15	12	6657	1.80	44419	27.02
Apr 15	15	6741	2.23	42986	34.89
2014/15 FY	147	86195	1.71	523001	28.11
Apr – Sep 14	80	43758	1.83	262217	30.51
2013/14 FY	155	84116	1.84	520710	29.77
Apr – Sep 13	79	42490	1.86	261068	30.26
2012/13 FY	169	87341	1.93	519481	32.53
Apr – Sep 12	82	43790	1.87	260452	31.48
2011/12 FY	157	92028	1.71	517981	30.31
Apr – Sep 11	71	45459	1.56	259700	27.34
2010/11 FY	121	87896	1.38	515420	23.48
Apr – Sep 10	56	43477	1.29	258416	21.67

*Monthly population = (Total population/Number of days in year) x Number of days in month

Figure 3.2. Abertawe Bro Morgannwg University Health Board monthly and 12 month moving average rates of MSSA bacteraemia per 1,000 hospital admissions, Apr 10 – Sep 15*



*12 month moving average rates are shown from Mar 11 as this is when the first full FY of data is complete

Abertawe Bro Morgannwg University
Health Board

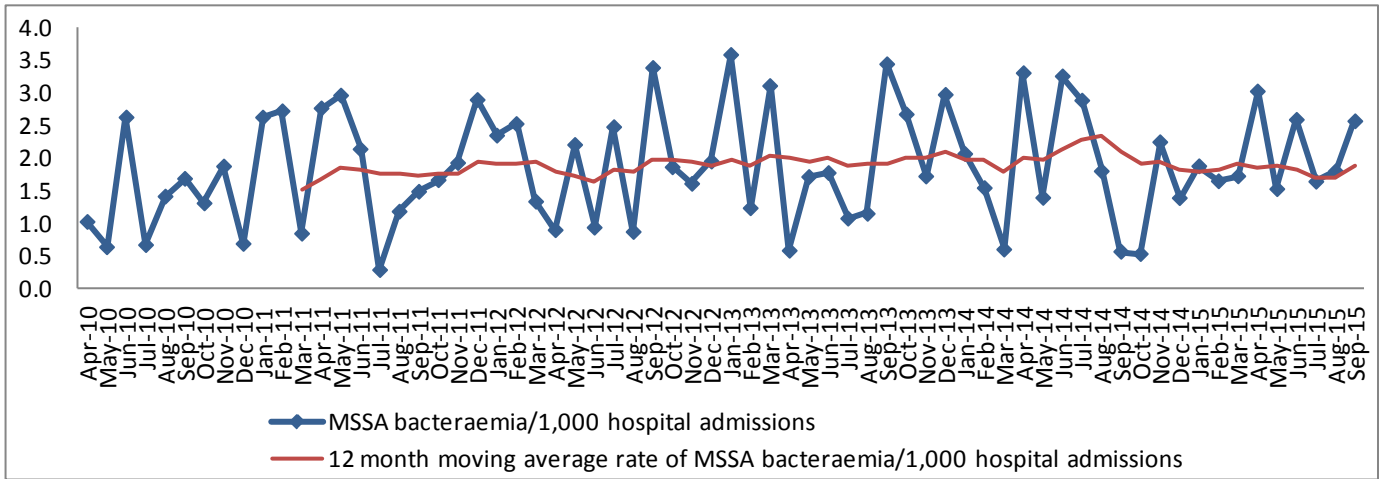
Morrison Hospital MSSA bacteraemia, Apr – Sep 15

- 45 cases of MSSA bacteraemia have been reported for the 6 month period. This is a 6% decrease in numbers compared to the equivalent period last year. (Table 3.3.) The rate of MSSA bacteraemia per 1,000 hospital admissions has decreased by 2%, from 2.23 to 2.19. (Table 3.5.)
- Compared to the Apr – Sep 10, there has been an 88% increase in the number of MSSA bacteraemia and a 63% increase in the rate of MSSA bacteraemia per 1,000 hospital admissions in this hospital. (Table 3.5.)
- The rate of MSSA bacteraemia in this hospital is not significantly different than the rates for the acute hospitals in Wales for this 6 month period. (Figure 3.7.)
- 53% (24) of the cases were diagnosed in hospital inpatient locations. The inpatient rate is 1.17 per 1,000 hospital admissions for this period.

Table 3.5. Morrison Hospital numbers and rates of MSSA bacteraemia per 1,000 hospital admissions, Apr 10 – Sep 15

	Number of MSSA bacteraemia	Number of hospital admissions	MSSA bacteraemia/ 1,000 hospital admissions
Apr – Sep 15	45	20545	2.19
Sep 15	9	3506	2.57
Aug 15	6	3331	1.80
Jul 15	6	3653	1.64
Jun 15	9	3476	2.59
May 15	5	3271	1.53
Apr 15	10	3308	3.02
2014/15 FY	80	42149	1.90
Apr – Sep 14	48	21557	2.23
2013/14 FY	74	41496	1.78
Apr – Sep 13	34	20967	1.62
2012/13 FY	84	41454	2.03
Apr – Sep 12	38	20769	1.83
2011/12 FY	80	41091	1.95
Apr – Sep 11	36	20084	1.79
2010/11 FY	55	36538	1.51
Apr – Sep 10	24	17860	1.34

Figure 3.3. Morriston Hospital monthly and 12 month moving average rates of MSSA bacteraemia per 1,000 hospital admissions, Apr 10 – Sep 15*



*12 month moving average rates are shown from Mar 11 as this is when the first full FY of data is complete

Abertawe Bro Morgannwg University
Health Board

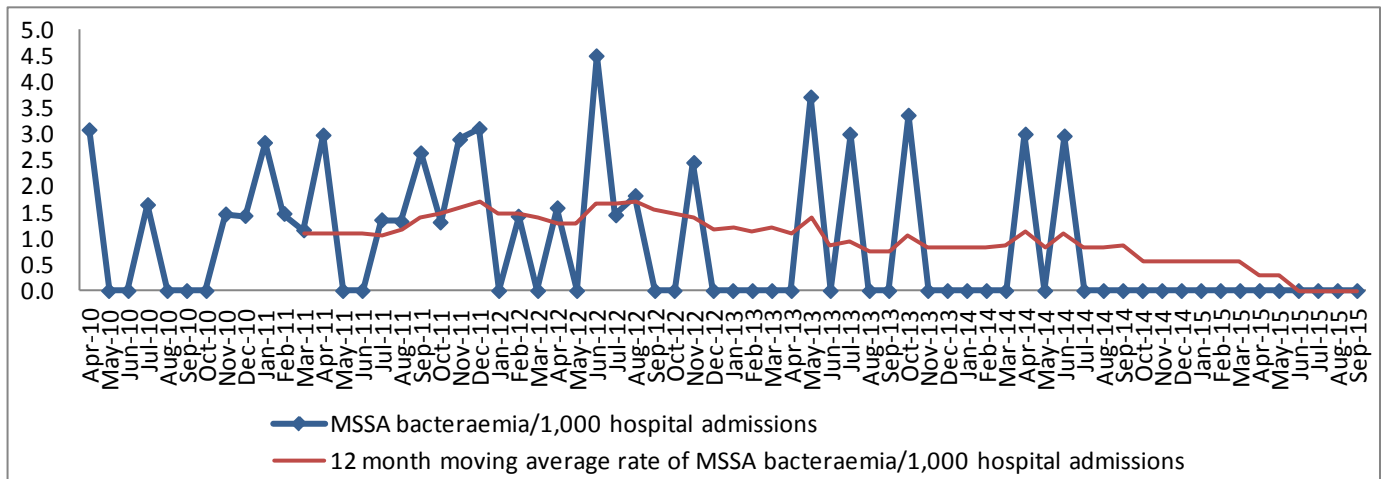
Neath Port Talbot Hospital MSSA bacteraemia, Apr – Sep 15

- No cases of MSSA bacteraemia have been reported for the 6 month period. This is a decrease of 2 in numbers, compared to the equivalent period last year. (Table 3.3.) The rate of MSSA bacteraemia per 1,000 hospital admissions has decreased from 1.14 to 0.00. (Table 3.6.)
- Compared to the Apr – Sep 10, there has been a decrease of 3 in the number of MSSA bacteraemia in this hospital (Table 3.6.)
- The rate of MSSA bacteraemia in this hospital is not significantly different than the rates for the acute hospitals in Wales for this 6 month period. (Figure 3.7.)

Table 3.6. Neath Port Talbot Hospital numbers and rates of MSSA bacteraemia per 1,000 hospital admissions, Apr 10 – Sep 15

	Number of MSSA bacteraemia	Number of hospital admissions	MSSA bacteraemia/ 1,000 hospital admissions
Apr – Sep 15	0	1716	0.00
Sep 15	0	261	0.00
Aug 15	0	186	0.00
Jul 15	0	348	0.00
Jun 15	0	345	0.00
May 15	0	286	0.00
Apr 15	0	290	0.00
2014/15 FY	2	3529	0.57
Apr – Sep 14	2	1762	1.14
2013/14 FY	3	3505	0.86
Apr – Sep 13	2	1745	1.15
2012/13 FY	7	5743	1.22
Apr – Sep 12	6	3597	1.67
2011/12 FY	12	8602	1.40
Apr – Sep 11	6	4386	1.37
2010/11 FY	9	8203	1.10
Apr – Sep 10	3	3926	0.76

Figure 3.4. Neath Port Talbot Hospital monthly and 12 month moving average rates of MSSA bacteraemia per 1,000 hospital admissions, Apr 10 – Sep 15*



*12 month moving average rates are shown from Mar 11 as this is when the first full FY of data is complete

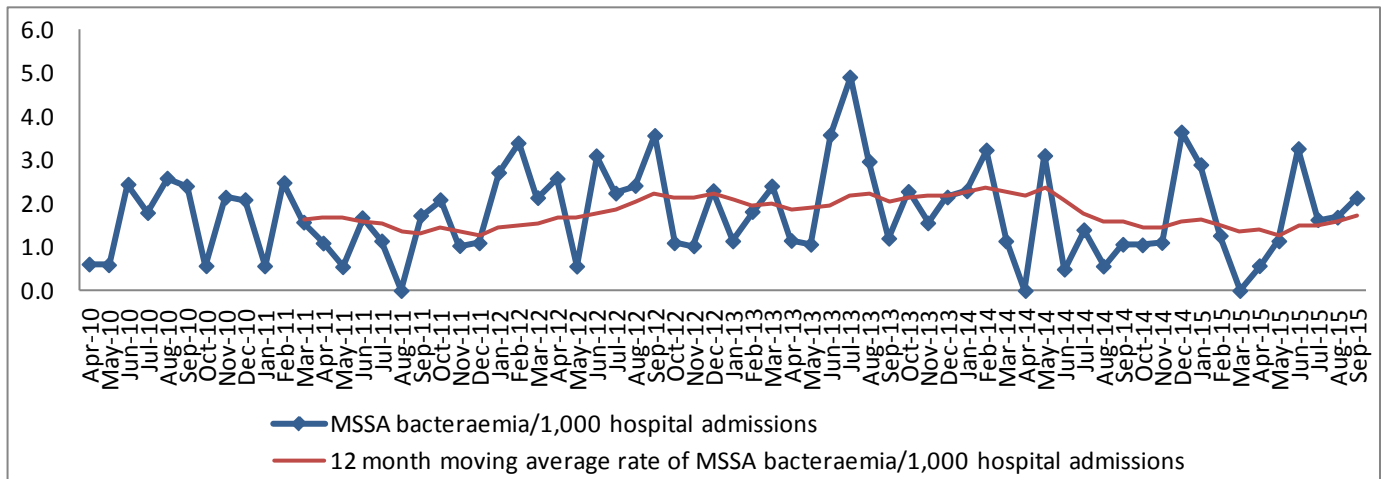
Princess of Wales Hospital MSSA bacteraemia, Apr – Sep 15

- 19 cases of MSSA bacteraemia have been reported for the 6 month period. This is a 46% increase in numbers compared to the equivalent period last year. (Table 3.3.) The rate of MSSA bacteraemia per 1,000 hospital admissions has increased by 57%, from 1.12 to 1.75. (Table 3.7.)
- Compared to the Apr – Sep 10, there has been a 12% increase in the number of MSSA bacteraemia and a 2% increase in the rate of MSSA bacteraemia per 1,000 hospital admissions in this hospital. (Table 3.7.)
- The rate of MSSA bacteraemia in this hospital is not significantly different than the rates for the acute hospitals in Wales for this 6 month period. (Figure 3.7.)
- 53% (10) of the cases were diagnosed in hospital inpatient locations. The inpatient rate is 0.92 per 1,000 hospital admissions for this period.

Table 3.7. Princess of Wales Hospital numbers and rates of MSSA bacteraemia per 1,000 hospital admissions, Apr 10 – Sep 15

	Number of MSSA bacteraemia	Number of hospital admissions	MSSA bacteraemia/ 1,000 hospital admissions
Apr – Sep 15	19	10856	1.75
Sep 15	4	1882	2.13
Aug 15	3	1781	1.68
Jul 15	3	1844	1.63
Jun 15	6	1841	3.26
May 15	2	1755	1.14
Apr 15	1	1753	0.57
2014/15 FY	31	22498	1.38
Apr – Sep 14	13	11641	1.12
2013/14 FY	48	21095	2.28
Apr – Sep 13	26	10489	2.48
2012/13 FY	41	20683	1.98
Apr – Sep 12	24	10088	2.38
2011/12 FY	34	21769	1.56
Apr – Sep 11	11	10597	1.04
2010/11 FY	34	20698	1.64
Apr – Sep 10	17	9866	1.72

Figure 3.5. Princess of Wales Hospital monthly and 12 month moving average rates of MSSA bacteraemia per 1,000 hospital admissions, Apr 10 – Sep 15*



*12 month moving average rates are shown from Mar 11 as this is when the first full FY of data is complete

Abertawe Bro Morgannwg University
Health Board

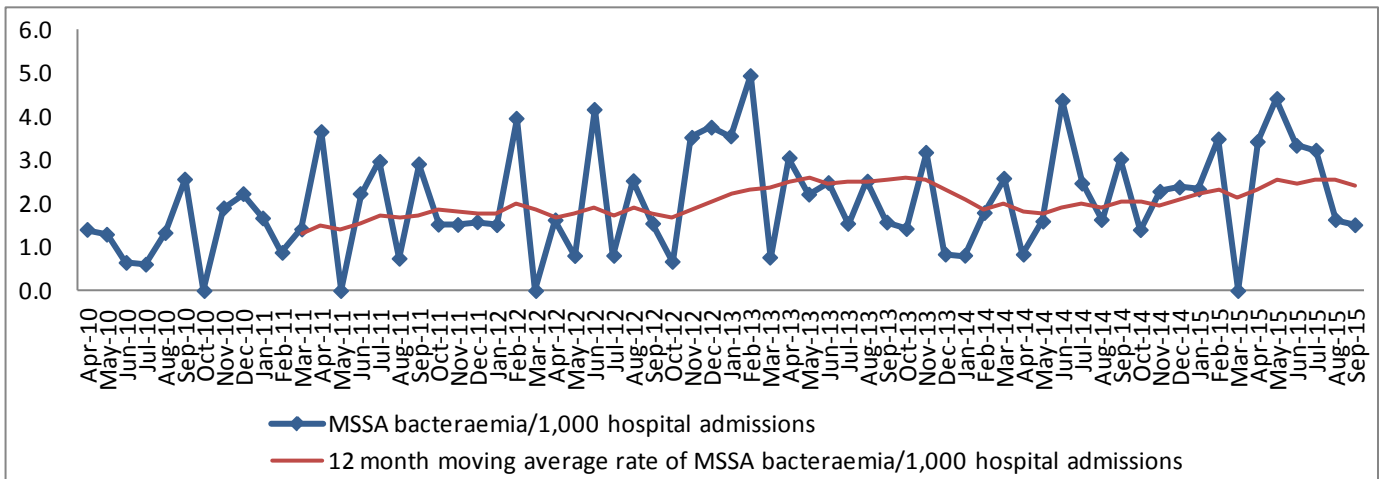
Singleton Hospital MSSA bacteraemia, Apr – Sep 15

- 21 cases of MSSA bacteraemia have been reported for the 6 month period. This is a 24% increase in numbers compared to the equivalent period last year. (Table 3.3.) The rate of MSSA bacteraemia per 1,000 hospital admissions has increased by 25%, from 2.31 to 2.88. (Table 3.8.)
- Compared to the Apr – Sep 10, there has been a 75% increase in the number of MSSA bacteraemia and a 122% increase in the rate of MSSA bacteraemia per 1,000 hospital admissions in this hospital. (Table 3.8.)
- The rate of MSSA bacteraemia in this hospital is not significantly different than the rates for the acute hospitals in Wales for this 6 month period. (Figure 3.7.)
- 67% (14) of the cases were diagnosed in hospital inpatient locations. The inpatient rate is 1.92 per 1,000 hospital admissions for this period.

Table 3.8. Singleton Hospital numbers and rates of MSSA bacteraemia per 1,000 hospital admissions, Apr 10 – Sep 15

	Number of MSSA bacteraemia	Number of hospital admissions	MSSA bacteraemia/ 1,000 hospital admissions
Apr – Sep 15	21	7295	2.88
Sep 15	2	1324	1.51
Aug 15	2	1227	1.63
Jul 15	4	1241	3.22
Jun 15	4	1200	3.33
May 15	5	1134	4.41
Apr 15	4	1169	3.42
2014/15 FY	32	15055	2.13
Apr – Sep 14	17	7366	2.31
2013/14 FY	30	15017	2.00
Apr – Sep 13	17	7640	2.23
2012/13 FY	37	15583	2.37
Apr – Sep 12	14	7403	1.89
2011/12 FY	30	15993	1.88
Apr – Sep 11	17	8122	2.09
2010/11 FY	23	17473	1.32
Apr – Sep 10	12	9235	1.30

Figure 3.6. Singleton Hospital monthly and 12 month moving average rates of MSSA bacteraemia per 1,000 hospital admissions, Apr 10 – Sep 15*



*12 month moving average rates are shown from Mar 11 as this is when the first full FY of data is complete

Staphylococcus aureus bacteraemia Surveillance
April to September 2015 Bi-annual Report
Abertawe Bro Morgannwg University Health Board

Figure 3.7. Rates of MSSA bacteraemia per 1,000 hospital admissions by acute hospital, Apr – Sep 15

