



**GIG**  
CYMRU  
**NHS**  
WALES

Iechyd Cyhoeddus  
Cymru  
Public Health  
Wales

**Surveillance:** *Clostridium difficile* (*C. difficile*) and *Staphylococcus aureus* (MRSA and MSSA bacteraemia)

**Report:** Financial year (FY) report

**Time period:** 1<sup>st</sup> April 2015 to 31<sup>st</sup> March 2016

**Health Board:** Abertawe Bro Morgannwg (ABM) University Health Board

**Content:**  
Pg 2 – *C. difficile*  
Pg 16 – MRSA bacteraemia  
Pg 30 – MSSA bacteraemia

**Issued by:** Welsh Healthcare Associated Infection Programme (WHAIP)

**Issue date:** 17<sup>th</sup> May 2016

## **1. *Clostridium difficile* (*C. difficile*)**

### *C. difficile* surveillance notes for interpretation

- This report presents data on numbers of *C. difficile* in Wales in the 2015/16 financial year (FY), with trend data from 2010/11.
- Data is mainly collected via Datastore, a data warehouse system used by all microbiology laboratories in Wales. This data is supplemented manually with *C. difficile* specimens from patients in Powys Teaching Health Board where the laboratory used for processing the specimen is in England.
- Data is extracted for the surveillance scheme using the following criteria:
  - The patient is at least 2 years old
  - The sample was not taken from a patient in a private hospital, a privately run dialysis unit or post-mortem
  - The sample had a positive *C. difficile* toxin test, if a single test (either a toxin A and B enzyme immunoassay or a neutralised cell toxicity assay) protocol was in use in the laboratory at the time the investigation was carried out, or a positive glutamate dehydrogenase (GDH) assay combined with a positive *C. difficile* toxin enzyme immunoassay, if a two-stage testing protocol was in use in the laboratory at the time the investigation was carried out.
  - Multiple positive samples from the same patient within a 28 day period are excluded as duplicates
- Hospital admission data has been supplied by NHS Wales Informatics Service (NWIS) from the Patient Episode Database for Wales (PEDW).
- Population data has been extracted from <https://statswales.wales.gov.uk/Catalogue/Population-and-Migration/Population/Estimates>.
- All ages are included in the hospital admission and population numbers used to calculate rates.
- Mid 2014 population estimates have been used to calculate the 2015/16 population rates. These rates will be updated when the mid 2015 population estimates become available.

**Wales**

- 1243 cases of *C. difficile* have been reported for the 2015/16 FY. This is a 6% decrease in numbers compared to the previous FY. The rate of *C. difficile* per 1,000 hospital admissions has decreased by 5%, from 2.95 to 2.80. (Table 1.1.)
- Compared to the previous FY, 5 of the 8 health boards/trust in Wales have achieved a reduction in numbers of *C. difficile*. (Table 1.1.)
- Compared to the 2010/11 FY, there has been a 56% decrease in the number of *C. difficile* and a 55% decrease in the rate of *C. difficile* per 1,000 hospital admissions in Wales. (Table 1.2.)
- Compared to the 2010/11 FY, 7 of the 8 health boards/trust in Wales have achieved a reduction in numbers of *C. difficile*. (Table 1.1.) Powys Teaching Health Board had some changes in data collection methods over this time period.
- 68% (851) of cases were diagnosed in the 18 acute hospitals, 8% (95) diagnosed in non-acute hospitals and 24% (294) in non-hospital locations. 3 locations were not specified.
- 61% (759) of cases were diagnosed in hospital inpatient locations. The inpatient rate for Wales is 1.71 per 1,000 hospital admissions for this period.
- 57% (713) of *C. difficile* were in female patients and 78% (974) were in patients aged 66+ for the 12 month period.
- The rate of *C. difficile* per 100,000 population has decreased by 6% compared to the previous FY, from 42.63 to 40.20. (Table 1.2.)
- Compared to 2010/11 FY, the rate of *C. difficile* per 100,000 population has decreased by 56%. (Table 1.2.)

**Table 1.1. Wales numbers of *C. difficile*, percentage change in numbers (from 2014/15 and 2010/11 FYs) and rates per 1,000 hospital admissions and 100,000 population by health board, 2015/16 FY**

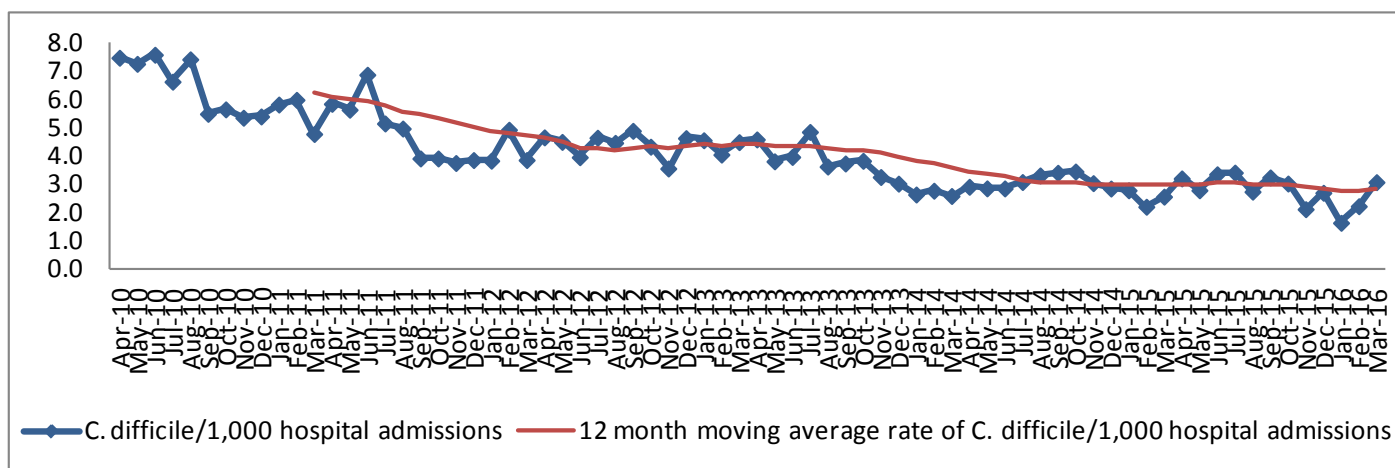
Health board /Trust	Number of <i>C. difficile</i>	% change in number of <i>C. difficile</i> from 2014/15 FY	% change in number of <i>C. difficile</i> from 2010/11 FY	<i>C. difficile</i> / 1,000 hospital admissions	<i>C. difficile</i> /100,000 population
<b>ABM</b>	274	5% (261)	-33% (411)	3.23	52.39
<b>Aneurin Bevan</b>	204	-8% (222)	-70% (679)	2.22	35.15
<b>Betsi Cadwaladr</b>	355	-10% (395)	-56% (805)	3.77	51.15
<b>Cardiff and Vale</b>	150	-12% (171)	-72% (527)	2.26	31.12
<b>Cwm Taf</b>	82	-19% (101)	-45% (148)	1.59	27.71
<b>Hywel Dda</b>	151	9% (139)	-20% (188)	2.89	39.32
<b>Powys Teaching</b>	22	5% (21)	100% (11)	12.83	16.58
<b>Velindre</b>	5	-38% (8)	-81% (26)	2.66	N/A
<b>Wales</b>	<b>1243</b>	<b>-6% (1318)</b>	<b>-56% (2795)</b>	<b>2.80</b>	<b>40.20</b>
Wales average	155			3.93	36.20
Wales median	151			2.77	35.15

**Table 1.2. Wales numbers and rates of *C. difficile* per 1,000 hospital admissions and 100,000 population, Apr 10 – Mar 16**

Mth/Yr	Number of <i>C. difficile</i>	Number of hospital admissions	<i>C. difficile</i> /1,000 hospital admissions	Population*	<i>C. difficile</i> /100,000 population
<b>2015/16 FY</b>	<b>1243</b>	<b>444720</b>	<b>2.80</b>	<b>3092036</b>	<b>40.23</b>
Mar 16	108	35090	3.08	261894	41.24
Feb 16	82	36825	2.23	244997	33.47
Jan 16	62	37817	1.64	261894	23.67
Dec 15	102	37745	2.70	261894	38.95
Nov 15	80	37708	2.12	253446	31.56
Oct 15	115	37962	3.03	261894	43.91
Sep 15	121	37284	3.25	253446	47.74
Aug 15	99	36103	2.74	261894	37.80
Jul 15	132	38641	3.42	261894	50.40
Jun 15	126	37534	3.36	253446	49.71
May 15	101	36186	2.79	261894	38.57
Apr 15	115	35825	3.21	253446	45.37
<b>2014/15 FY</b>	<b>1318</b>	<b>446699</b>	<b>2.95</b>	<b>3092036</b>	<b>42.63</b>
<b>2013/14 FY</b>	<b>1577</b>	<b>442821</b>	<b>3.56</b>	<b>3082412</b>	<b>51.16</b>
<b>2012/13 FY</b>	<b>1934</b>	<b>439792</b>	<b>4.40</b>	<b>3074067</b>	<b>62.91</b>
<b>2011/12 FY</b>	<b>2142</b>	<b>455772</b>	<b>4.70</b>	<b>3063758</b>	<b>69.91</b>
<b>2010/11 FY</b>	<b>2795</b>	<b>448561</b>	<b>6.23</b>	<b>3049971</b>	<b>91.64</b>

\*Monthly population = (Total population/Number of days in year) x Number of days in month

**Figure 1.1. Wales monthly and 12 month moving average rates of *C. difficile* per 1,000 hospital admissions, Apr 10 – Mar 16\***



\*12 month moving average rates are shown from Mar 11 as this is when the first full FY of data is complete

**Abertawe Bro Morgannwg University**  
**Health Board**

**Abertawe Bro Morgannwg University Health Board *C. difficile*, 2015/16 FY**

- 274 cases of *C. difficile* have been reported for the 2015/16 FY. This is a 5% increase in numbers compared to the previous FY. The rate of *C. difficile* per 1,000 hospital admissions has increased by 7%, from 3.03 to 3.23. (Table 1.3.) The rate of *C. difficile* per 1,000 hospital admissions in Wales has decreased by 5% for the same period.
- Compared to the 2010/11 FY, there has been a 33% decrease in the number of *C. difficile* and a 31% decrease in the rate of *C. difficile* per 1,000 hospital admissions in this health board. (Table 1.4.) The rate of *C. difficile* per 1,000 hospital admissions in Wales has decreased by 55%.
- 81% (223) of cases were diagnosed in the 4 acute hospitals in this health board, 2% (6) diagnosed in non-acute hospitals and 16% (45) in non-hospital locations. (Table 1.9.)
- 75% (206) of cases in this health board were diagnosed in hospital inpatient locations. The inpatient rate is 2.43 per 1,000 hospital admissions for this period.
- 58% (160) of *C. difficile* in this health board were in female patients and 77% (211) were in patients aged 66+ for the 12 month period.
- The rate of *C. difficile* per 100,000 population has increased by 5% compared to the previous FY, from 49.90 to 52.39. (Table 1.4.) The rate of *C. difficile* per 100,000 population in Wales has decreased by 6% for the same period.
- Compared to the 2010/11 FY, the rate of *C. difficile* per 100,000 population has decreased by 34% in this health board. (Table 1.4.) The rate of *C. difficile* per 100,000 population in Wales has decreased by 56%.

**Table 1.3. Abertawe Bro Morgannwg University Health Board numbers of *C. difficile*, percentage change in numbers (from 2014/15 and 2010/11 FYs) and rates per 1,000 hospital admissions and 100,000 population by acute hospital, 2015/16 FY**

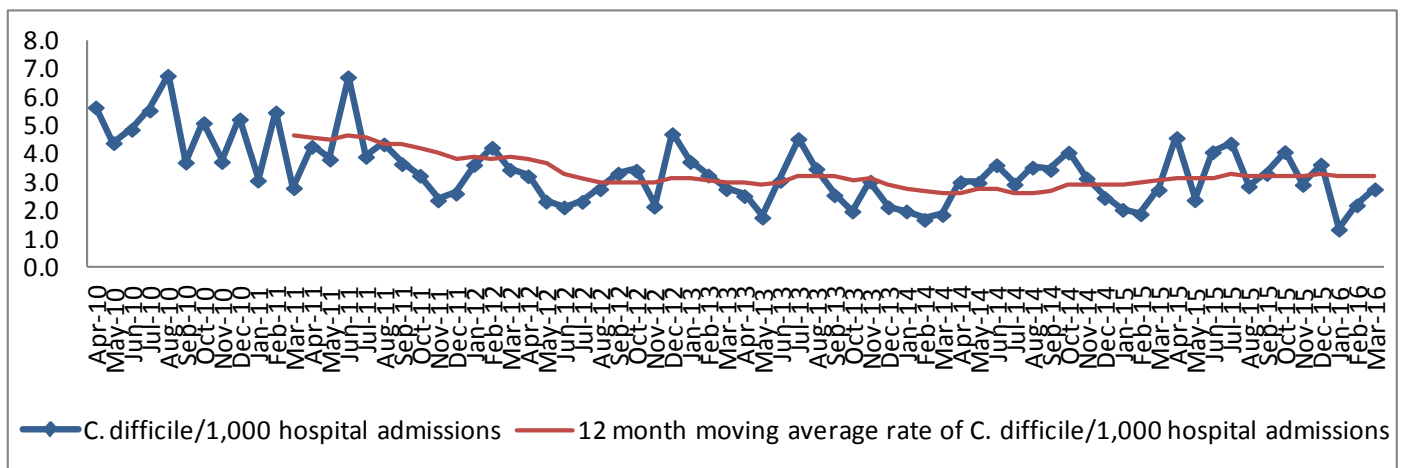
Health board/ hospital	Number of <i>C. difficile</i>	% change in number of <i>C. difficile</i> from 2014/15 FY	% change in number of <i>C. difficile</i> from 2010/11 FY	<i>C. difficile</i> / 1,000 hospital admissions	<i>C. difficile</i> /100,000 population
Morrison	104	33% (78)	-24% (137)	2.45	N/A
Neath Port Talbot	9	-18% (11)	-79% (43)	2.51	N/A
Princess of Wales	61	-6% (65)	-41% (103)	2.79	N/A
Singleton	49	-16% (58)	-31% (71)	3.53	N/A
<b>ABM</b>	<b>274</b>	<b>5% (261)</b>	<b>-33% (411)</b>	<b>3.23</b>	<b>52.39</b>
<b>Wales</b>	<b>1243</b>	<b>-6% (1318)</b>	<b>-56% (2795)</b>	<b>2.80</b>	<b>40.20</b>

**Table 1.4. Abertawe Bro Morgannwg University Health Board numbers and rates of *C. difficile* per 1,000 hospital admissions and 100,000 population, Apr 10 – Mar 16**

Mth/Yr	Number of <i>C. difficile</i>	Number of hospital admissions	<i>C. difficile</i> /1,000 hospital admissions	Population*	<i>C. difficile</i> /100,000 population
<b>2015/16 FY</b>	<b>274</b>	<b>84909</b>	<b>3.23</b>	<b>523001</b>	<b>52.39</b>
Mar 16	19	6828	2.78	44298	42.89
Feb 16	16	7215	2.22	41440	38.61
Jan 16	10	7332	1.36	44298	22.57
Dec 15	26	7118	3.65	44298	58.69
Nov 15	21	7145	2.94	42869	48.99
Oct 15	30	7327	4.09	44298	67.72
Sep 15	24	7220	3.32	42869	55.98
Aug 15	20	6936	2.88	44298	45.15
Jul 15	32	7279	4.40	44298	72.24
Jun 15	29	7088	4.09	42869	67.65
May 15	16	6666	2.40	44298	36.12
Apr 15	31	6755	4.59	42869	72.31
<b>2014/15 FY</b>	<b>261</b>	<b>86226</b>	<b>3.03</b>	<b>523001</b>	<b>49.90</b>
<b>2013/14 FY</b>	<b>219</b>	<b>85044</b>	<b>2.58</b>	<b>520710</b>	<b>42.06</b>
<b>2012/13 FY</b>	<b>263</b>	<b>87341</b>	<b>3.01</b>	<b>519481</b>	<b>50.63</b>
<b>2011/12 FY</b>	<b>355</b>	<b>92028</b>	<b>3.86</b>	<b>517981</b>	<b>68.54</b>
<b>2010/11 FY</b>	<b>411</b>	<b>87896</b>	<b>4.68</b>	<b>515420</b>	<b>79.74</b>

\*Monthly population = (Total population/Number of days in year) x Number of days in month

**Figure 1.2. Abertawe Bro Morgannwg University Health Board monthly and 12 month moving average rates of *C. difficile* per 1,000 hospital admissions, Apr 10 – Mar 16\***



\*12 month moving average rates are shown from Mar 11 as this is when the first full FY of data is complete

**Abertawe Bro Morgannwg University**  
**Health Board**

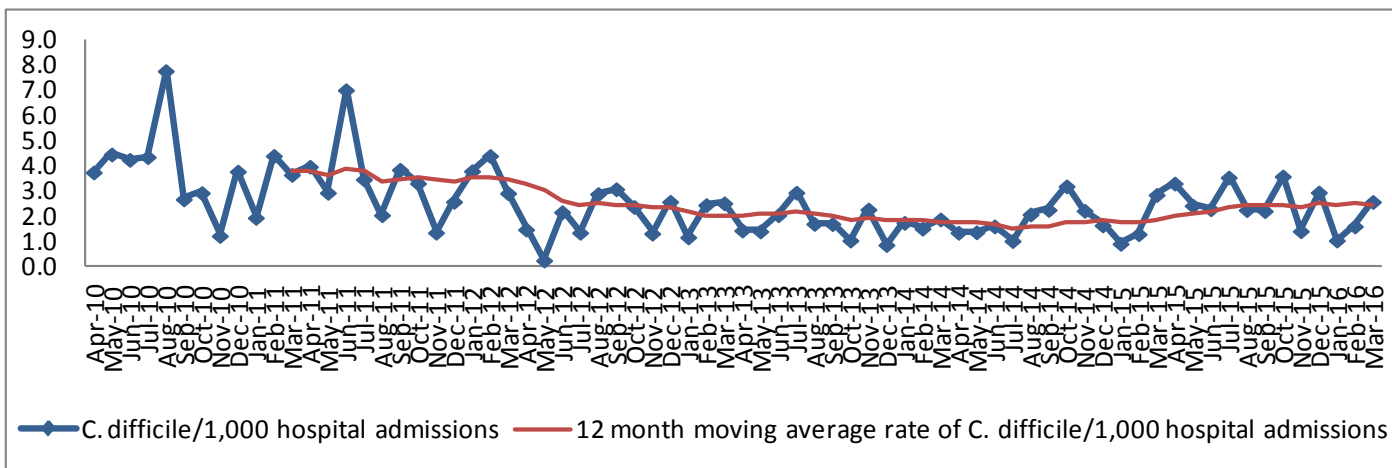
**Morrison Hospital *C. difficile*, 2015/16 FY**

- 104 cases of *C. difficile* have been reported for the 2015/16 FY. This is a 33% increase in numbers compared to the previous FY. (Table 1.3.) The rate of *C. difficile* per 1,000 hospital admissions has increased by 32%, from 1.85 to 2.45. (Table 1.5.)
- Compared to the 2010/11 FY, there has been a 24% decrease in the number of *C. difficile* and a 35% decrease in the rate of *C. difficile* per 1,000 hospital admissions in this hospital. (Table 1.5.)
- The rate of *C. difficile* in this hospital is not significantly different from the rates for the acute hospitals in Wales for this 12 month period. (Figure 1.7.)
- 91% (95) of the cases were diagnosed in hospital inpatient locations. The inpatient rate is 2.24 per 1,000 hospital admissions for this period.

**Table 1.5. Morrison Hospital numbers and rates of *C. difficile* per 1,000 hospital admissions, Apr 10 – Mar 16**

Mth/Yr	Number of <i>C. difficile</i>	Number of hospital admissions	<i>C. difficile</i> /1,000 hospital admissions
<b>2015/16 FY</b>	<b>104</b>	<b>42472</b>	<b>2.45</b>
Mar 16	9	3466	2.60
Feb 16	6	3687	1.63
Jan 16	4	3743	1.07
Dec 15	11	3703	2.97
Nov 15	5	3481	1.44
Oct 15	13	3606	3.61
Sep 15	8	3580	2.23
Aug 15	8	3517	2.27
Jul 15	13	3648	3.56
Jun 15	8	3464	2.31
May 15	8	3269	2.45
Apr 15	11	3308	3.33
<b>2014/15 FY</b>	<b>78</b>	<b>42150</b>	<b>1.85</b>
<b>2013/14 FY</b>	<b>73</b>	<b>41883</b>	<b>1.74</b>
<b>2012/13 FY</b>	<b>82</b>	<b>41454</b>	<b>1.98</b>
<b>2011/12 FY</b>	<b>142</b>	<b>41091</b>	<b>3.46</b>
<b>2010/11 FY</b>	<b>137</b>	<b>36538</b>	<b>3.75</b>

**Figure 1.3. Morriston Hospital monthly and 12 month moving average rates of *C. difficile* per 1,000 hospital admissions, Apr 10 – Mar 16\***



\*12 month moving average rates are shown from Mar 11 as this is when the first full FY of data is complete



**Abertawe Bro Morgannwg University  
Health Board**

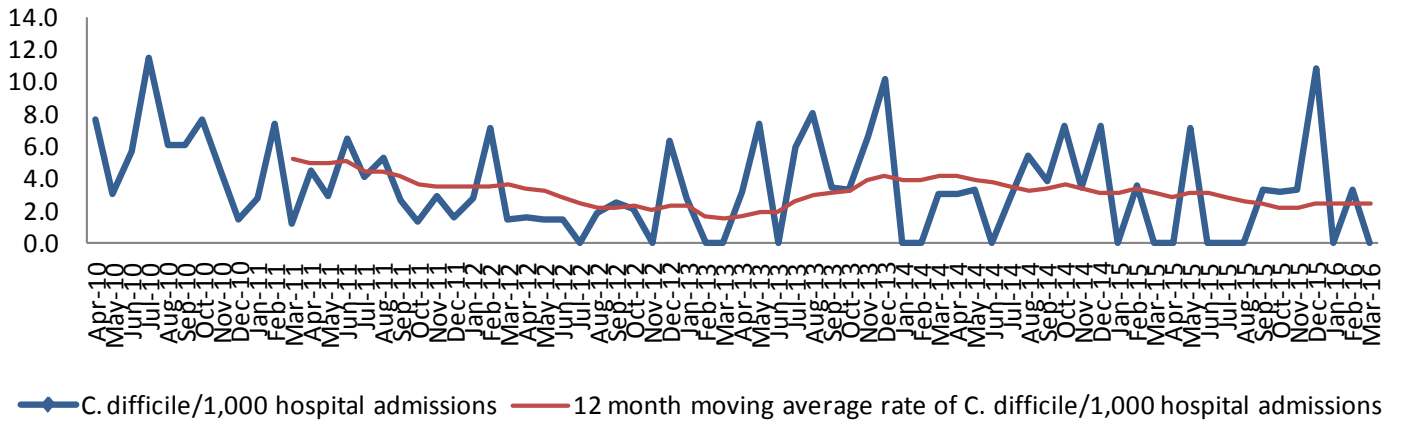
**Neath Port Talbot Hospital *C. difficile*, 2015/16 FY**

- 9 cases of *C. difficile* have been reported for the 2015/16 FY in this hospital. This is an 18% decrease in numbers compared to the previous FY. (Table 1.3.) The rate of *C. difficile* per 1,000 hospital admissions has decreased by 20%, from 3.12 to 2.51. (Table 1.6.)
- Compared to the 2010/11 FY, there has been a 79% decrease in the number of *C. difficile* and a 52% decrease in the rate of *C. difficile* per 1,000 hospital admissions in this hospital. (Table 1.6.)
- The rate of *C. difficile* in this hospital is not significantly different from the rates for the acute hospitals in Wales for this 12 month period. (Figure 1.7.)
- 100% (9) of the cases were diagnosed in hospital inpatient locations. The inpatient rate is 2.51 per 1,000 hospital admissions for this period.

**Table 1.6. Neath Port Talbot Hospital numbers and rates of *C. difficile* per 1,000 hospital admissions, Apr 10 – Mar 16**

Mth/Yr	Number of <i>C. difficile</i>	Number of hospital admissions	<i>C. difficile</i> /1,000 hospital admissions
<b>2015/16 FY</b>	<b>9</b>	<b>3590</b>	<b>2.51</b>
Mar 16	0	256	0.00
Feb 16	1	303	3.30
Jan 16	0	316	0.00
Dec 15	3	277	10.83
Nov 15	1	301	3.32
Oct 15	1	311	3.22
Sep 15	1	304	3.29
Aug 15	0	290	0.00
Jul 15	0	331	0.00
Jun 15	0	326	0.00
May 15	2	282	7.09
Apr 15	0	293	0.00
<b>2014/15 FY</b>	<b>11</b>	<b>3531</b>	<b>3.12</b>
<b>2013/14 FY</b>	<b>15</b>	<b>3596</b>	<b>4.17</b>
<b>2012/13 FY</b>	<b>9</b>	<b>5743</b>	<b>1.57</b>
<b>2011/12 FY</b>	<b>31</b>	<b>8602</b>	<b>3.60</b>
<b>2010/11 FY</b>	<b>43</b>	<b>8203</b>	<b>5.24</b>

**Figure 1.4. Neath Port Talbot Hospital monthly and 12 month moving average rates of *C. difficile* per 1,000 hospital admissions, Apr 10 – Mar 15\***



\*12 month moving average rates are shown from Mar 11 as this is when the first full FY of data is complete

**Abertawe Bro Morgannwg University  
Health Board**

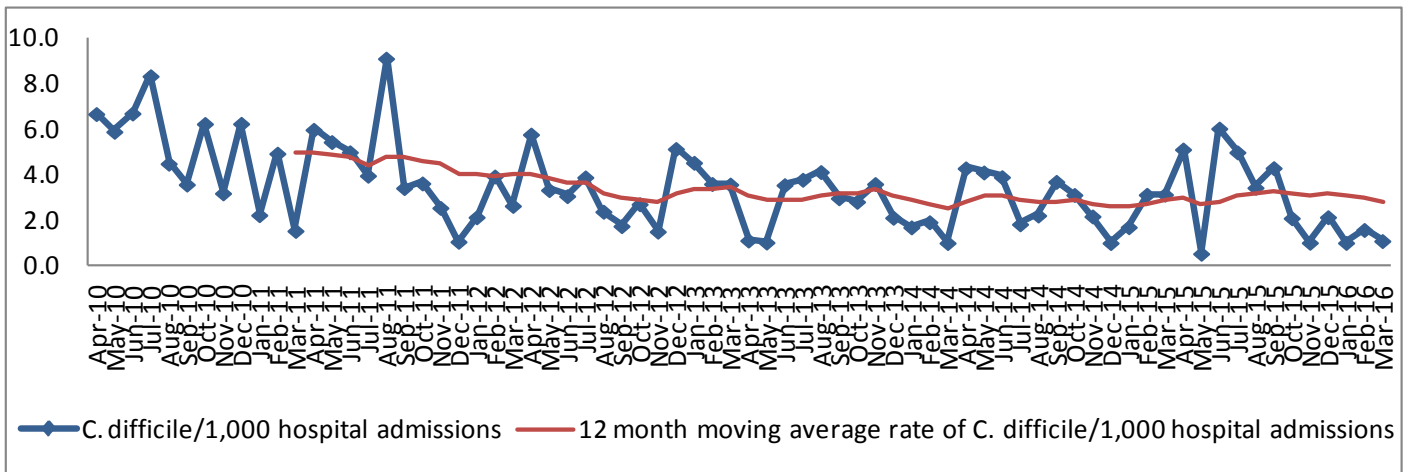
**Princess of Wales Hospital *C. difficile*, 2015/16 FY**

- 61 cases of *C. difficile* have been reported for the 2015/16 FY in this hospital. This is a 6% decrease in numbers compared to the previous FY. (Table 1.3.) The rate of *C. difficile* per 1,000 hospital admissions has decreased by 3%, from 2.89 to 2.79. (Table 1.7.)
- Compared to the 2010/11 FY, there has been a 41% decrease in the number of *C. difficile* and a 44% decrease in the rate of *C. difficile* per 1,000 hospital admissions in this hospital. (Table 1.7.)
- The rate of *C. difficile* in this hospital is not significantly different from the rates for the acute hospitals in Wales for this 12 month period. (Figure 1.7.)
- 93% (57) of the cases were diagnosed in hospital inpatient locations. The inpatient rate is 2.61 per 1,000 hospital admissions for this period.

**Table 1.7. Princess of Wales Hospital numbers and rates of *C. difficile* per 1,000 hospital admissions, Apr 10 – Mar 16**

Mth/Yr	Number of <i>C. difficile</i>	Number of hospital admissions	<i>C. difficile</i> /1,000 hospital admissions
<b>2015/16 FY</b>	<b>61</b>	<b>21872</b>	<b>2.79</b>
Mar 16	2	1775	1.13
Feb 16	3	1860	1.61
Jan 16	2	1912	1.05
Dec 15	4	1842	2.17
Nov 15	2	1901	1.05
Oct 15	4	1881	2.13
Sep 15	8	1851	4.32
Aug 15	6	1733	3.46
Jul 15	9	1796	5.01
Jun 15	11	1817	6.05
May 15	1	1752	0.57
Apr 15	9	1752	5.14
<b>2014/15 FY</b>	<b>65</b>	<b>22498</b>	<b>2.89</b>
<b>2013/14 FY</b>	<b>53</b>	<b>21238</b>	<b>2.50</b>
<b>2012/13 FY</b>	<b>71</b>	<b>20683</b>	<b>3.43</b>
<b>2011/12 FY</b>	<b>88</b>	<b>21769</b>	<b>4.04</b>
<b>2010/11 FY</b>	<b>103</b>	<b>20698</b>	<b>4.98</b>

**Figure 1.5. Princess of Wales Hospital monthly and 12 month moving average rates of *C. difficile* per 1,000 hospital admissions, Apr 10 – Mar 16\***



\*12 month moving average rates are shown from Mar 11 as this is when the first full FY of data is complete

**Abertawe Bro Morgannwg University  
Health Board**

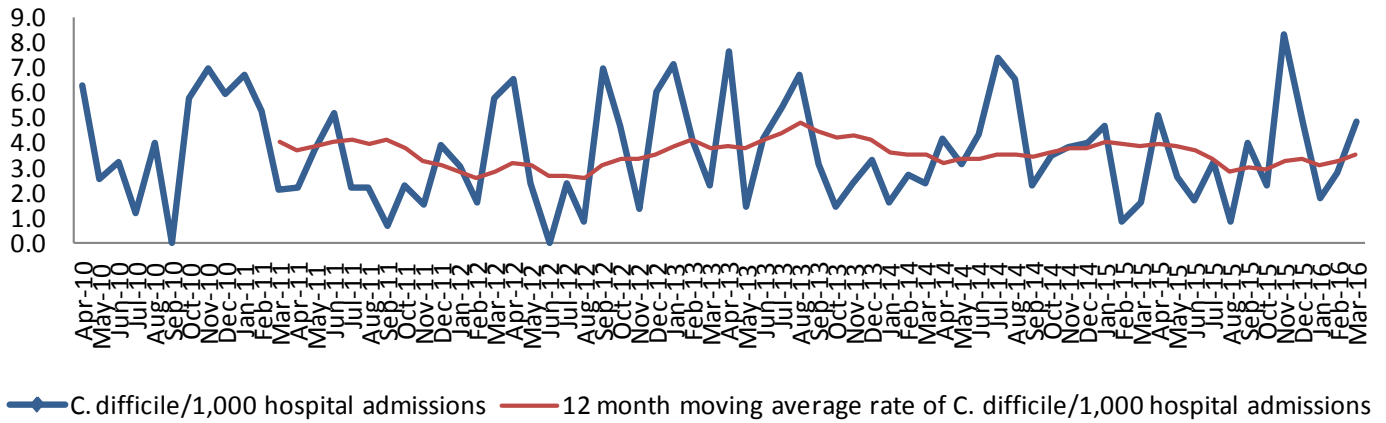
**Singleton Hospital *C. difficile*, 2015/16 FY**

- 49 cases of *C. difficile* have been reported for the 2015/15 FY in this hospital. This is a 16% decrease in numbers compared to the previous FY. (Table 1.3.) The rate of *C. difficile* per 1,000 hospital admissions has decreased by 8%, from 3.85 to 3.53. (Table 1.8.)
- Compared to the 2010/11 FY, there has been a 31% decrease in the number of *C. difficile* and a 13% decrease in the rate of *C. difficile* per 1,000 hospital admissions in this hospital. (Table 1.8.)
- The rate of *C. difficile* in this hospital is significantly higher than the rates for the acute hospitals in Wales for this 12 month period. (Figure 1.7.)
- 80% (39) of the cases were diagnosed in hospital inpatient locations. The inpatient rate is 2.81 per 1,000 hospital admissions for this period.

**Table 1.8. Singleton Hospital numbers and rates of *C. difficile* per 1,000 hospital admissions, Apr 10 – Mar 16**

Mth/Yr	Number of <i>C. difficile</i>	Number of hospital admissions	<i>C. difficile</i> /1,000 hospital admissions
<b>2015/16 FY</b>	<b>49</b>	<b>13863</b>	<b>3.53</b>
Mar 16	5	1033	4.84
Feb 16	3	1058	2.84
Jan 16	2	1109	1.80
Dec 15	5	1054	4.74
Nov 15	10	1198	8.35
Oct 15	3	1287	2.33
Sep 15	5	1242	4.03
Aug 15	1	1150	0.87
Jul 15	4	1235	3.24
Jun 15	2	1192	1.68
May 15	3	1136	2.64
Apr 15	6	1169	5.13
<b>2014/15 FY</b>	<b>58</b>	<b>15056</b>	<b>3.85</b>
<b>2013/14 FY</b>	<b>53</b>	<b>15131</b>	<b>3.50</b>
<b>2012/13 FY</b>	<b>59</b>	<b>15583</b>	<b>3.79</b>
<b>2011/12 FY</b>	<b>46</b>	<b>15993</b>	<b>2.88</b>
<b>2010/11 FY</b>	<b>71</b>	<b>17473</b>	<b>4.06</b>

**Figure 1.6. Singleton Hospital monthly and 12 month moving average rates of *C. difficile* per 1,000 hospital admissions, Apr 10 – Mar 16\***



\*12 month moving average rates are shown from Mar 11 as this is when the first full FY of data is complete

**Abertawe Bro Morgannwg University Health Board**

Figure 1.7. Rates of *C. difficile* per 1,000 hospital admissions by acute hospital, 2015/16 FY

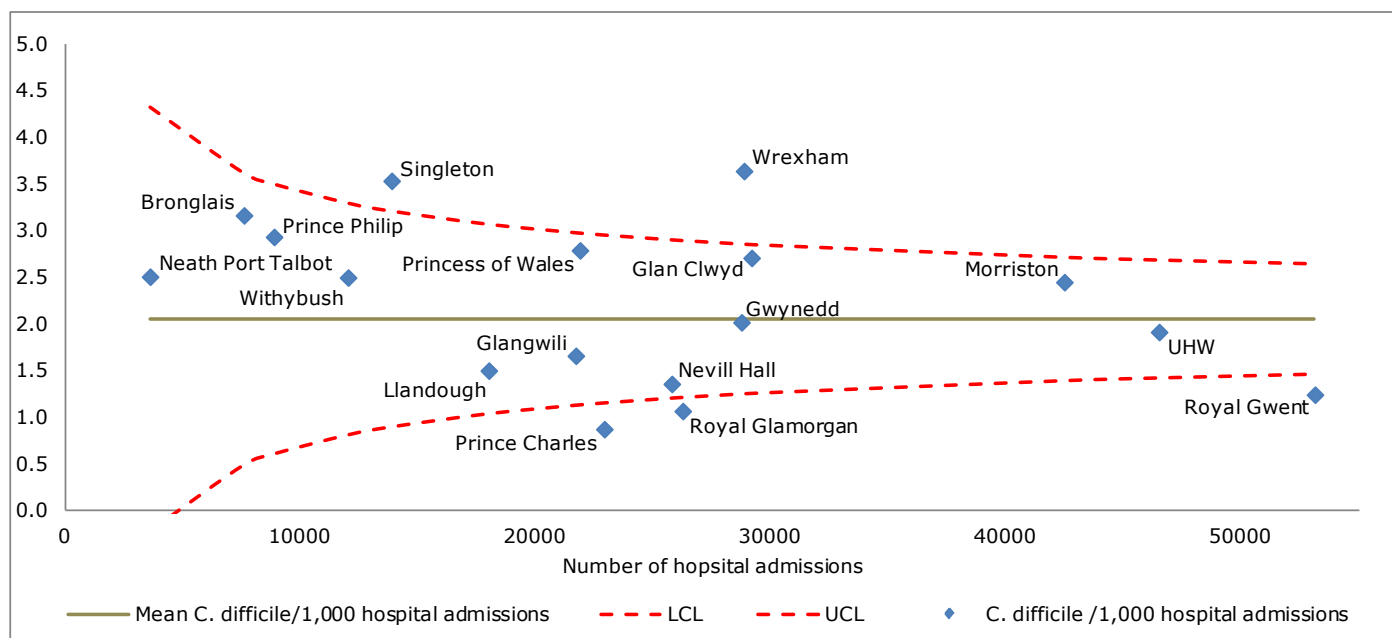


Table 1.9. Abertawe Bro Morgannwg University Health Board, numbers of *C. difficile* in non-acute hospital locations, 2015/16 FY

Location	Number of <i>C. difficile</i>
Cefn Coed Hospital	1
Glanrhyd Hospital	1
Gorseinon Hospital	4
Non-hospital location	45

## **2. MRSA (meticillin-resistant *Staphylococcus aureus*) bacteraemia**

### MRSA bacteraemia surveillance notes for interpretation

- This report presents data on numbers of MRSA from blood cultures (bacteraemia) in Wales in the 2015/16 financial year, with trend data from 2010/11 (other than for Powys Health Board where data collection started in Apr 2011).
- Data is mainly collected via Datastore, a data warehouse system used by all microbiology laboratories in Wales. This data is supplemented manually with MRSA bacteraemia specimens from patients in Powys Health Board where the laboratory used for processing the specimen is in England.
- Data is extracted for the surveillance scheme using the following criteria:
  - *Staphylococcus aureus* (*S. aureus*) was identified from a blood culture sample
  - The sample was not taken from a patient in a private hospital, a privately run dialysis unit or post-mortem
  - Multiple positive samples from the same patient within a 14 day period are excluded as duplicates
- *S. aureus* positive blood cultures are assigned as MRSA (meticillin-resistant *S. aureus*) or MSSA (meticillin-sensitive *S. aureus*) on the basis of sensitivity to the antibiotic flucloxacillin
- Hospital admission data has been supplied by NHS Wales Informatics Service (NWIS) from the Patient Episode Database for Wales (PEDW).
- Population data has been extracted from <https://statswales.wales.gov.uk/Catalogue/Population-and-Migration/Population/Estimates>
- Mid 2014 population estimates have been used to calculate the 2015/16 population rates. These rates will be updated when the mid 2015 population estimates become available.



**Wales MRSA bacteraemia, 2015/16 FY**

- 101 cases of MRSA bacteraemia have been reported for the 2015/16 FY. This is 39% decrease in numbers compared to the previous FY. The rate of MRSA *bacteraemia* per 1,000 hospital admissions has decreased by 39%, from 0.37 to 0.23. (Table 2.1.)
- Compared to the previous FY, 6 of the 8 health boards/NHS Trust in Wales have achieved a reduction in numbers of MRSA bacteraemia. (Table 2.1.)
- Compared to the 2010/11 FY, there has been a 54% decrease in the number of MRSA bacteraemia and a 53% decrease in the rate of MRSA bacteraemia per 1,000 hospital admissions. (Table 2.2.)
- Compared to the 2010/11 FY, 7 of the 7 (data was not collected from Powys Teaching Health Board for this FY) health boards/NHS Trust in Wales have achieved a reduction in numbers of MRSA bacteraemia. (Table 2.2.)
- 98% (99) of cases were diagnosed in the 18 acute hospitals and 2% (2) diagnosed in non-acute hospitals. (Table 2.2.)
- 54% (55) of cases were diagnosed in hospital inpatient locations. The inpatient rate is 0.12 per 1,000 hospital admissions for this period.
- 25% (25) of MRSA bacteraemia were in female patients and 71% (72) were in patients aged 66+ for the 12 month period.
- The rate of MRSA bacteraemia per 100,000 population has decreased by 39% compared to the previous FY, from 5.37 to 3.27. (Table 2.2.)
- Compared to 2010/11 FY, the rate of MRSA bacteraemia per 100,000 population has decreased by 54%. (Table 2.2.)

**Table 2.1. Wales numbers of MRSA bacteraemia, percentage change in numbers (from 2014/15 and 2010/11 FYs) and rates per 1,000 hospital admissions and 100,000 population by health board, 2015/16 FY**

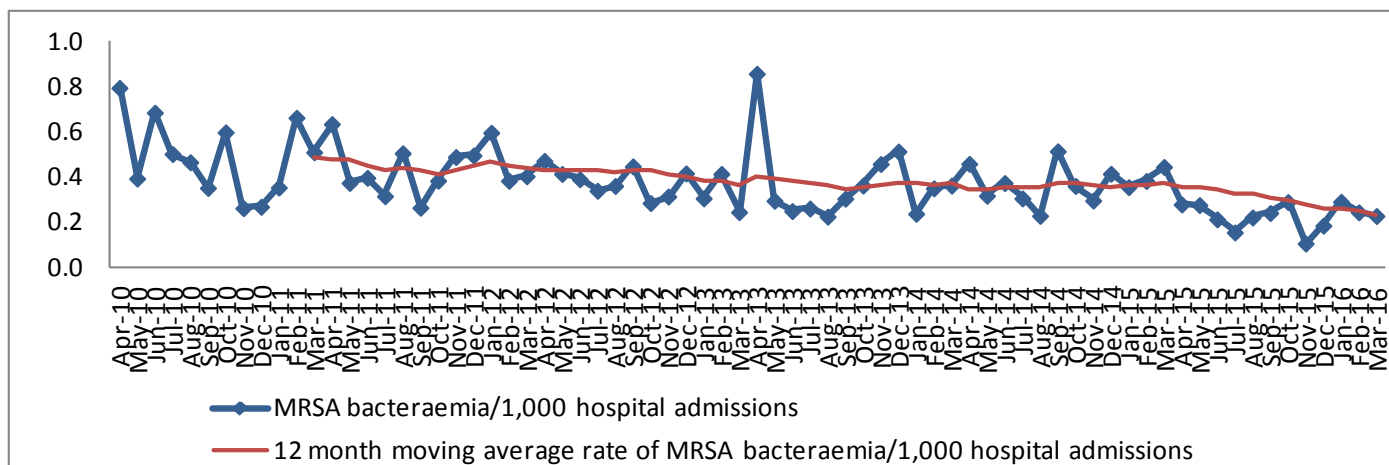
Health board	Number of MRSA bacteraemia	% change in number of MRSA bacteraemia from 2014/15 FY	% change in number of MRSA bacteraemia from 2010/11 FY	MRSA bacteraemia /1,000 hospital admissions	MRSA bacteraemia /100,000 population
<b>ABM</b>	14	-36% (22)	-70% (47)	0.16	2.68
<b>Aneurin Bevan</b>	20	-17% (24)	-9% (22)	0.22	3.45
<b>Betsi Cadwaladr</b>	34	-11% (38)	-38% (55)	0.36	4.90
<b>Cardiff and Vale</b>	13	-70% (44)	-74% (50)	0.20	2.70
<b>Cwm Taf</b>	7	-53% (15)	-65% (20)	0.14	2.37
<b>Hywel Dda</b>	13	-43% (23)	-35% (20)	0.25	3.39
<b>Powys</b>	0	=N/A (0)	N/A	0.00	0.00
<b>Velindre</b>	0	=N/A (0)	-N/A (4)	0.00	N/A
<b>Wales</b>	<b>101</b>	<b>-39% (166)</b>	<b>-54% (218)</b>	<b>0.23</b>	<b>3.27</b>
Wales average	13			0.17	2.78
Wales median	13			0.18	2.70

**Table 2.2. Wales numbers and rates of MRSA bacteraemia per 1,000 hospital admissions and 100,000 population, Apr 10 – Mar 16**

Mth/Yr	Number of MRSA bacteraemia	Number of hospital admissions	MRSA bacteraemia/ 1,000 hospital admissions	Population*	MRSA bacteraemia/ 100,000 population
<b>2015/16 FY</b>	<b>101</b>	<b>444720</b>	<b>0.23</b>	<b>3092036</b>	<b>3.27</b>
Mar 16	8	35090	0.23	261894	3.05
Feb 16	9	36825	0.24	244997	3.67
Jan 16	11	37817	0.29	261894	4.20
Dec 15	7	37745	0.19	261894	2.67
Nov 15	4	37708	0.11	253446	1.58
Oct 15	11	37962	0.29	261894	4.20
Sep 15	9	37284	0.24	253446	3.55
Aug 15	8	36103	0.22	261894	3.05
Jul 15	6	38641	0.16	261894	2.29
Jun 15	8	37534	0.21	253446	3.16
May 15	10	36186	0.28	261894	3.82
Apr 15	10	35825	0.28	253446	3.95
<b>2014/15 FY</b>	<b>166</b>	<b>446699</b>	<b>0.37</b>	<b>3092036</b>	<b>5.37</b>
<b>2013/14 FY</b>	<b>165</b>	<b>442821</b>	<b>0.37</b>	<b>3082412</b>	<b>5.35</b>
<b>2012/13 FY</b>	<b>161</b>	<b>439792</b>	<b>0.37</b>	<b>3074067</b>	<b>5.24</b>
<b>2011/12 FY</b>	<b>199</b>	<b>455772</b>	<b>0.44</b>	<b>3063758</b>	<b>6.50</b>
<b>2010/11 FY</b>	<b>218</b>	<b>448561</b>	<b>0.49</b>	<b>3049971</b>	<b>7.15</b>

\*Monthly population = (Total population/Number of days in year) x Number of days in month

**Figure 2.1. Wales monthly and 12 month moving average rates of MRSA bacteraemia per 1,000 hospital admissions, Apr 10 – Mar 16\***



\*12 month moving average rates are shown from Mar 11 as this is when the first full FY of data is complete

**Abertawe Bro Morgannwg University**  
**Health Board**

**Abertawe Bro Morgannwg University Health Board MRSA bacteraemia, 2015/16 FY**

- 14 cases of MRSA bacteraemia have been reported for the 2015/16 FY in this health board. This is a 36% decrease in numbers compared to the previous FY. The rate of MRSA bacteraemia per 1,000 hospital admissions has decreased by 35%, from 0.26 to 0.16. (Table 2.3.) The rate of MRSA bacteraemia per 1,000 hospital admissions in Wales has decreased by 39% for the same period.
- Compared to the 2010/11 FY, there has been a 70% decrease in the number of MRSA bacteraemia and a 69% decrease in the rate of MRSA bacteraemia per 1,000 hospital admissions in this health board. (Table 2.4.) The rate of MRSA bacteraemia per 1,000 hospital admissions in Wales has decreased by 53%.
- All of the cases were diagnosed in the 4 acute hospitals in this health board.
- 79% (11) of cases in this health board were diagnosed in hospital inpatient locations. The inpatient rate is 0.13 per 1,000 hospital admissions for this period.
- 21% (3) of MRSA bacteraemia in this health board were in female patients and 57% (8) were in patients aged 66+ for the 12 month period.
- The rate of MRSA bacteraemia per 100,000 population has decreased by 36% compared to the previous FY, from 4.21 to 2.68. (Table 2.4.) The rate of MRSA bacteraemia per 100,000 population in Wales has decreased by 39% for the same period.
- Compared to the 2010/11 FY, the rate of MRSA bacteraemia per 100,000 population has decreased by 71% in this health board. (Table 2.4.) The rate of MRSA bacteraemia per 100,000 population in Wales has decreased by 54%.

**Table 2.3. Abertawe Bro Morgannwg University Health Board numbers of MRSA bacteraemia, percentage change in numbers (from 2014/15 and 2010/11 FYs) and rates per 1,000 hospital admissions and 100,000 population by acute hospital, 2015/16 FY**

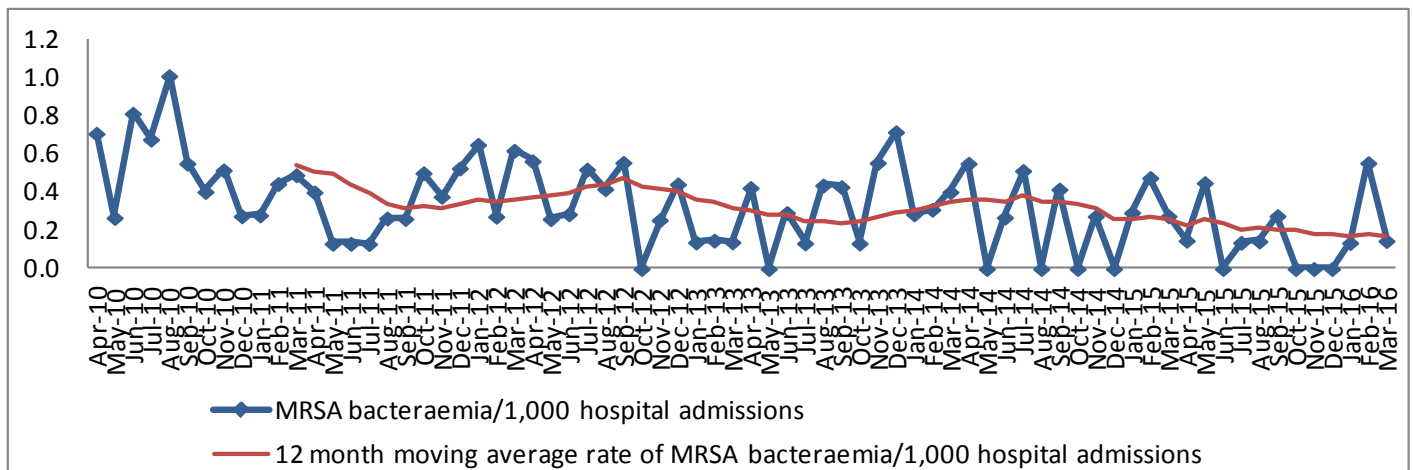
Health board/ hospital	Number of MRSA bacteraemia	% change in number of MRSA bacteraemia from 2014/15 FY	% change in number of MRSA bacteraemia from 2010/11 FY	MRSA bacteraemia /1,000 hospital admissions	MRSA bacteraemia /100,000 population
Morriston	3	-67% (9)	-86% (21)	0.07	N/A
Neath Port Talbot	1	-67% (3)	-50% (2)	0.28	N/A
Princess of Wales	6	-25% (8)	-60% (15)	0.27	N/A
Singleton	4	100% (2)	-50% (8)	0.29	N/A
<b>ABM</b>	<b>14</b>	<b>-36% (22)</b>	<b>-70% (47)</b>	<b>0.16</b>	<b>2.68</b>
<b>Wales</b>	<b>101</b>	<b>-39% (166)</b>	<b>-54% (218)</b>	<b>0.23</b>	<b>3.27</b>

**Table 2.4. Abertawe Bro Morgannwg University Health Board numbers and rates of MRSA bacteraemia per 1,000 hospital admissions and 100,000 population, Apr 10 – Mar 16**

Mth/Yr	Number of MRSA bacteraemia	Number of hospital admissions	MRSA bacteraemia /1,000 hospital admissions	Population*	MRSA bacteraemia/ 100,000 population
<b>2015/16 FY</b>	<b>14</b>	<b>84909</b>	<b>0.16</b>	<b>523001</b>	<b>2.68</b>
Mar 16	1	6828	0.15	44298	2.26
Feb 16	4	7215	0.55	41440	9.65
Jan 16	1	7332	0.14	44298	2.26
Dec 15	0	7118	0.00	44298	0.00
Nov 15	0	7145	0.00	42869	0.00
Oct 15	0	7327	0.00	44298	0.00
Sep 15	2	7220	0.28	42869	4.67
Aug 15	1	6936	0.14	44298	2.26
Jul 15	1	7279	0.14	44298	2.26
Jun 15	0	7088	0.00	42869	0.00
May 15	3	6666	0.45	44298	6.77
Apr 15	1	6755	0.15	42869	2.33
<b>2014/15 FY</b>	<b>22</b>	<b>86226</b>	<b>0.26</b>	<b>523001</b>	<b>4.21</b>
<b>2013/14 FY</b>	<b>29</b>	<b>85044</b>	<b>0.34</b>	<b>520710</b>	<b>5.57</b>
<b>2012/13 FY</b>	<b>27</b>	<b>87341</b>	<b>0.31</b>	<b>519481</b>	<b>5.20</b>
<b>2011/12 FY</b>	<b>33</b>	<b>92028</b>	<b>0.36</b>	<b>517981</b>	<b>6.37</b>
<b>2010/11 FY</b>	<b>47</b>	<b>87896</b>	<b>0.53</b>	<b>515420</b>	<b>9.12</b>

\*Monthly population = (Total population/Number of days in year) x Number of days in month

**Figure 2.2. Abertawe Bro Morgannwg University Health Board monthly and 12 month moving average rates of MRSA bacteraemia per 1,000 hospital admissions, Apr 10 – Mar 16\***



\*12 month moving average rates are shown from Mar 11 as this is when the first full FY of data is complete

**Abertawe Bro Morgannwg University**  
**Health Board**

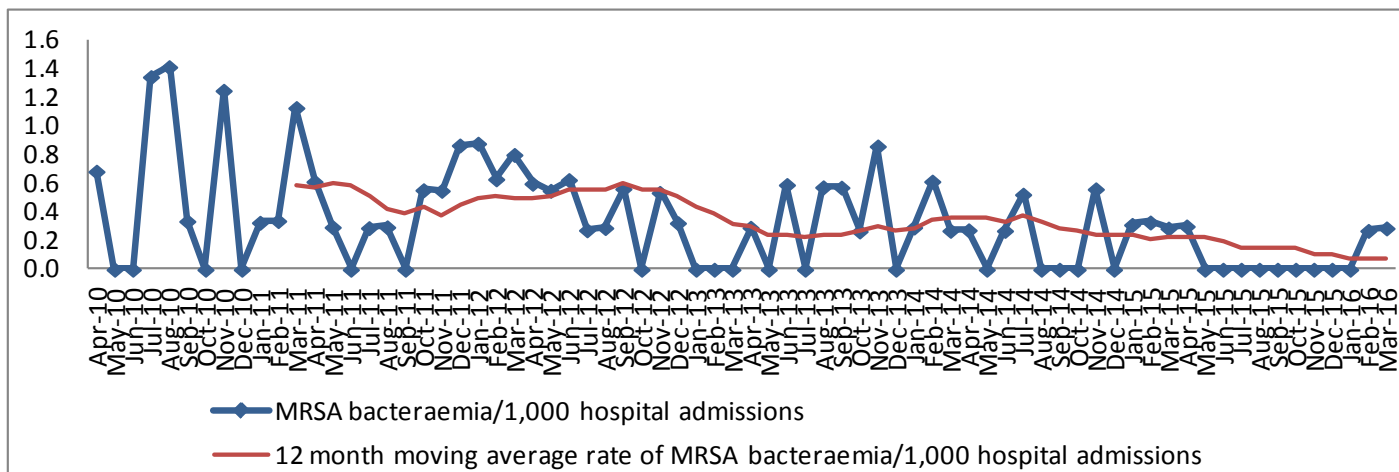
**Morrison Hospital MRSA bacteraemia, 2015/16 FY**

- 3 cases of MRSA bacteraemia have been reported for the 2015/16 FY in this hospital. This is a 67% decrease in numbers compared to the previous FY. (Table 2.3.) The rate of MRSA bacteraemia per 1,000 hospital admissions has decreased by 67%, from 0.21 to 0.07. (Table 2.5.)
- Compared to the 2010/11 FY, there has been a 86% decrease in the number of MRSA bacteraemia and a 88% decrease in the rate of MRSA bacteraemia per 1,000 hospital admissions in this hospital. (Table 2.5.)
- The rate of MRSA bacteraemia in this hospital is not significantly different from the rates for the acute hospitals in Wales for this 12 month period. (Figure 2.7.)
- 33% (1) of the cases were diagnosed in hospital inpatient locations. The inpatient rate is 0.02 per 1,000 hospital admissions for this period.

**Table 2.5. Morrison Hospital numbers and rates of MRSA bacteraemia per 1,000 hospital admissions, Apr 10 – Mar 16**

Mth/Yr	Number of MRSA bacteraemia	Number of hospital admissions	MRSA bacteraemia/1,000 hospital admissions
<b>2015/16 FY</b>	<b>3</b>	<b>42472</b>	<b>0.07</b>
Mar 16	1	3466	0.29
Feb 16	1	3687	0.27
Jan 16	0	3743	0.00
Dec 15	0	3703	0.00
Nov 15	0	3481	0.00
Oct 15	0	3606	0.00
Sep 15	0	3580	0.00
Aug 15	0	3517	0.00
Jul 15	0	3648	0.00
Jun 15	0	3464	0.00
May 15	0	3269	0.00
Apr 15	1	3308	0.30
<b>2014/15 FY</b>	<b>9</b>	<b>42150</b>	<b>0.21</b>
<b>2013/14 FY</b>	<b>15</b>	<b>41883</b>	<b>0.36</b>
<b>2012/13 FY</b>	<b>13</b>	<b>41454</b>	<b>0.31</b>
<b>2011/12 FY</b>	<b>20</b>	<b>41091</b>	<b>0.49</b>
<b>2010/11 FY</b>	<b>21</b>	<b>36538</b>	<b>0.57</b>

**Figure 2.3. Morriston Hospital monthly and 12 month moving average rates of MRSA bacteraemia per 1,000 hospital admissions, Apr 10 – Mar 16\***



\*12 month moving average rates are shown from Mar 11 as this is when the first full FY of data is complete

**Abertawe Bro Morgannwg University**  
**Health Board**

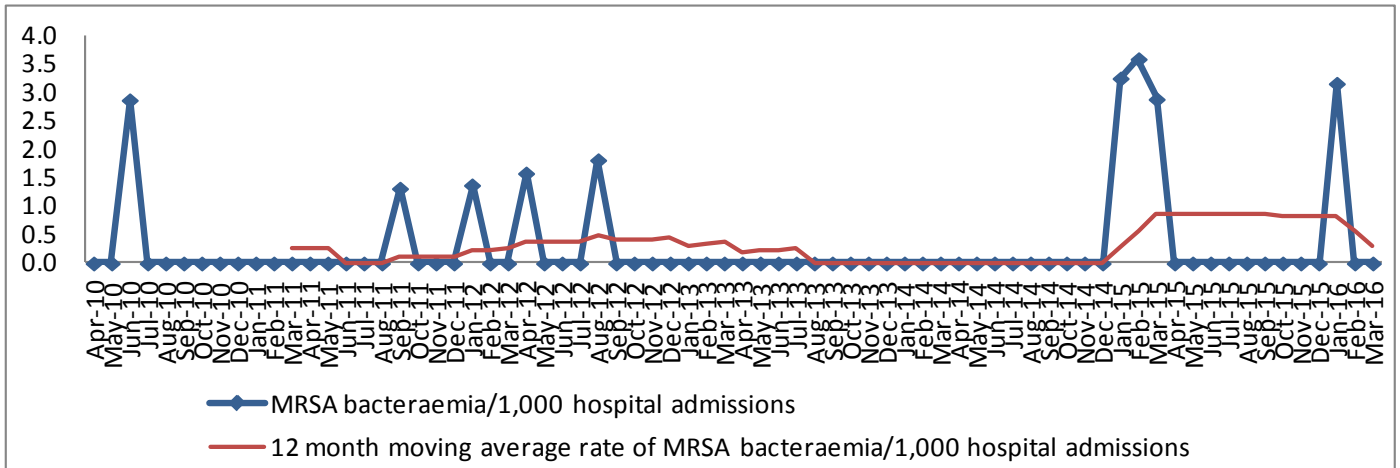
**Neath Port Talbot Hospital MRSA bacteraemia, 2015/16 FY**

- 1 case of MRSA bacteraemia has been reported for the 2015/16 FY in this hospital. This is a 67% decrease in numbers compared to the previous FY. (Table 2.3.) The rate of MRSA bacteraemia per 1,000 hospital admissions has decreased by 67% from 0.85 to 0.28. (Table 2.6.)
- Compared to the 2010/11 FY, there has been a 50% decrease in the number of MRSA bacteraemia and a 14% increase in the rate of MRSA bacteraemia per 1,000 hospital admissions in this hospital. (Table 2.6.)
- The rate of MRSA bacteraemia in this hospital is not significantly different from the rates for the acute hospitals in Wales for this 12 month period. (Figure 2.7.)
- All of the cases were diagnosed in hospital inpatient locations.

**Table 2.6. Neath Port Talbot Hospital numbers and rates of MRSA bacteraemia per 1,000 hospital admissions, Apr 10 – Mar 16**

Mth/Yr	Number of MRSA bacteraemia	Number of hospital admissions	MRSA bacteraemia/1,000 hospital admissions
<b>2015/16 FY</b>	<b>1</b>	<b>3590</b>	<b>0.28</b>
Mar 16	0	256	0.00
Feb 16	0	303	0.00
Jan 16	1	316	3.16
Dec 15	0	277	0.00
Nov 15	0	301	0.00
Oct 15	0	311	0.00
Sep 15	0	304	0.00
Aug 15	0	290	0.00
Jul 15	0	331	0.00
Jun 15	0	326	0.00
May 15	0	282	0.00
Apr 15	0	293	0.00
<b>2014/15 FY</b>	<b>3</b>	<b>3531</b>	<b>0.85</b>
<b>2013/14 FY</b>	<b>0</b>	<b>3596</b>	<b>0.00</b>
<b>2012/13 FY</b>	<b>2</b>	<b>5743</b>	<b>0.35</b>
<b>2011/12 FY</b>	<b>2</b>	<b>8602</b>	<b>0.23</b>
<b>2010/11 FY</b>	<b>2</b>	<b>8203</b>	<b>0.24</b>

**Figure 2.4. Neath Port Talbot Hospital monthly and 12 month moving average rates MRSA bacteraemia per 1,000 hospital admissions, Apr 10 – Mar 16\***



\*12 month moving average rates are shown from Mar 11 as this is when the first full FY of data is complete



**Abertawe Bro Morgannwg University**  
**Health Board**

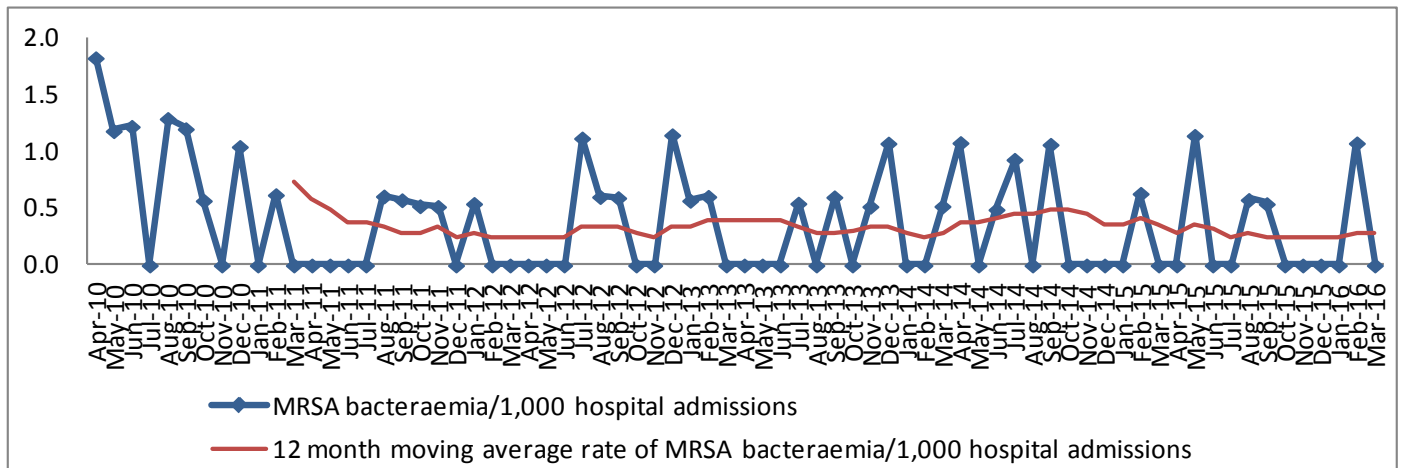
**Princess of Wales Hospital MRSA bacteraemia, 2015/16 FY**

- 6 cases of MRSA bacteraemia have been reported for the 2015/16 FY in this hospital. This is a 25% decrease in numbers compared to the previous FY. (Table 2.3.) The rate of MRSA bacteraemia per 1,000 hospital admissions has decreased by 23%, from 0.36 to 0.27. (Table 2.7.)
- Compared to the 2010/11 FY, there has been a 60% decrease in the number of MRSA bacteraemia and a 62% decrease in the rate of MRSA bacteraemia per 1,000 hospital admissions in this hospital. (Table 2.7.)
- The rate of MRSA bacteraemia in this hospital is not significantly different from the rates for the acute hospitals in Wales for this 12 month period. (Figure 2.7.)
- All the cases were diagnosed in hospital inpatient locations.

**Table 2.7. Princess of Wales Hospital numbers and rates of MRSA bacteraemia per 1,000 hospital admissions, Apr 10 – Mar 16**

Mth/Yr	Number of MRSA bacteraemia	Number of hospital admissions	MRSA bacteraemia/1,000 hospital admissions
<b>2015/16 FY</b>	<b>6</b>	<b>21872</b>	<b>0.27</b>
Mar 16	0	1775	0.00
Feb 16	2	1860	1.08
Jan 16	0	1912	0.00
Dec 15	0	1842	0.00
Nov 15	0	1901	0.00
Oct 15	0	1881	0.00
Sep 15	1	1851	0.54
Aug 15	1	1733	0.58
Jul 15	0	1796	0.00
Jun 15	0	1817	0.00
May 15	2	1752	1.14
Apr 15	0	1752	0.00
<b>2014/15 FY</b>	<b>8</b>	<b>22498</b>	<b>0.36</b>
<b>2013/14 FY</b>	<b>6</b>	<b>21238</b>	<b>0.28</b>
<b>2012/13 FY</b>	<b>8</b>	<b>20683</b>	<b>0.39</b>
<b>2011/12 FY</b>	<b>5</b>	<b>21769</b>	<b>0.23</b>
<b>2010/11 FY</b>	<b>15</b>	<b>20698</b>	<b>0.72</b>

**Figure 2.5. Princess of Wales Hospital monthly and 12 month moving average rates of MRSA bacteraemia per 1,000 hospital admissions, Apr 10 – Mar 16\***



\*12 month moving average rates are shown from Mar 11 as this is when the first full FY of data is complete

**Abertawe Bro Morgannwg University**  
**Health Board**

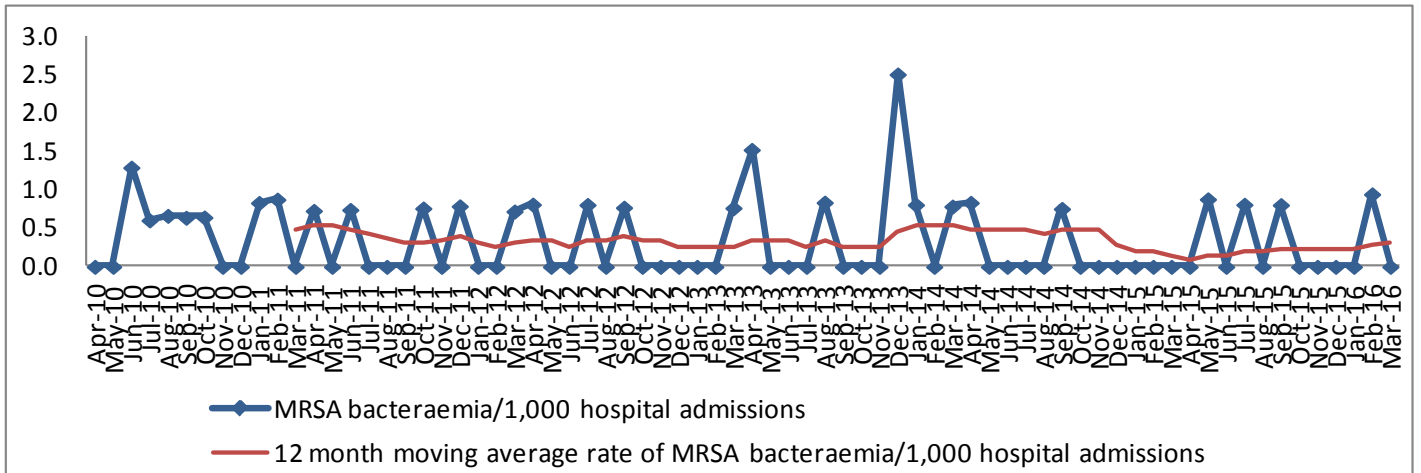
**Singleton Hospital MRSA bacteraemia, 2015/16 FY**

- 4 cases of MRSA bacteraemia have been reported for the 2015/16 FY in this hospital. This is a 100% increase in numbers compared to the previous FY. (Table 2.3.) The rate of MRSA bacteraemia per 1,000 hospital admissions has increased by 117%, from 0.13 to 0.29. (Table 2.8.)
- Compared to the 2010/11 FY, there has been 50% decrease in the number of MRSA bacteraemia and a 37% decrease in the rate of MRSA bacteraemia per 1,000 hospital admissions in this hospital. (Table 2.8.)
- The rate of MRSA bacteraemia in this hospital is not significantly different from the rates for the acute hospitals in Wales for this 12 month period. (Figure 2.7.)
- 75% (3) of the cases were diagnosed in hospital inpatient locations. The inpatient rate is 0.22 per 1,000 hospital admissions for this period.

**Table 2.8. Singleton Hospital numbers and rates of MRSA bacteraemia per 1,000 hospital admissions, Apr 10 – Mar 16**

Mth/Yr	Number of MRSA bacteraemia	Number of hospital admissions	MRSA bacteraemia/1,000 hospital admissions
<b>2015/16 FY</b>	<b>4</b>	<b>13863</b>	<b>0.29</b>
Mar 16	0	1033	0.00
Feb 16	1	1058	0.95
Jan 16	0	1109	0.00
Dec 15	0	1054	0.00
Nov 15	0	1198	0.00
Oct 15	0	1287	0.00
Sep 15	1	1242	0.81
Aug 15	0	1150	0.00
Jul 15	1	1235	0.81
Jun 15	0	1192	0.00
May 15	1	1136	0.88
Apr 15	0	1169	0.00
<b>2014/15 FY</b>	<b>2</b>	<b>15056</b>	<b>0.13</b>
<b>2013/14 FY</b>	<b>8</b>	<b>15131</b>	<b>0.53</b>
<b>2012/13 FY</b>	<b>4</b>	<b>15583</b>	<b>0.26</b>
<b>2011/12 FY</b>	<b>5</b>	<b>15993</b>	<b>0.31</b>
<b>2010/11 FY</b>	<b>8</b>	<b>17473</b>	<b>0.46</b>

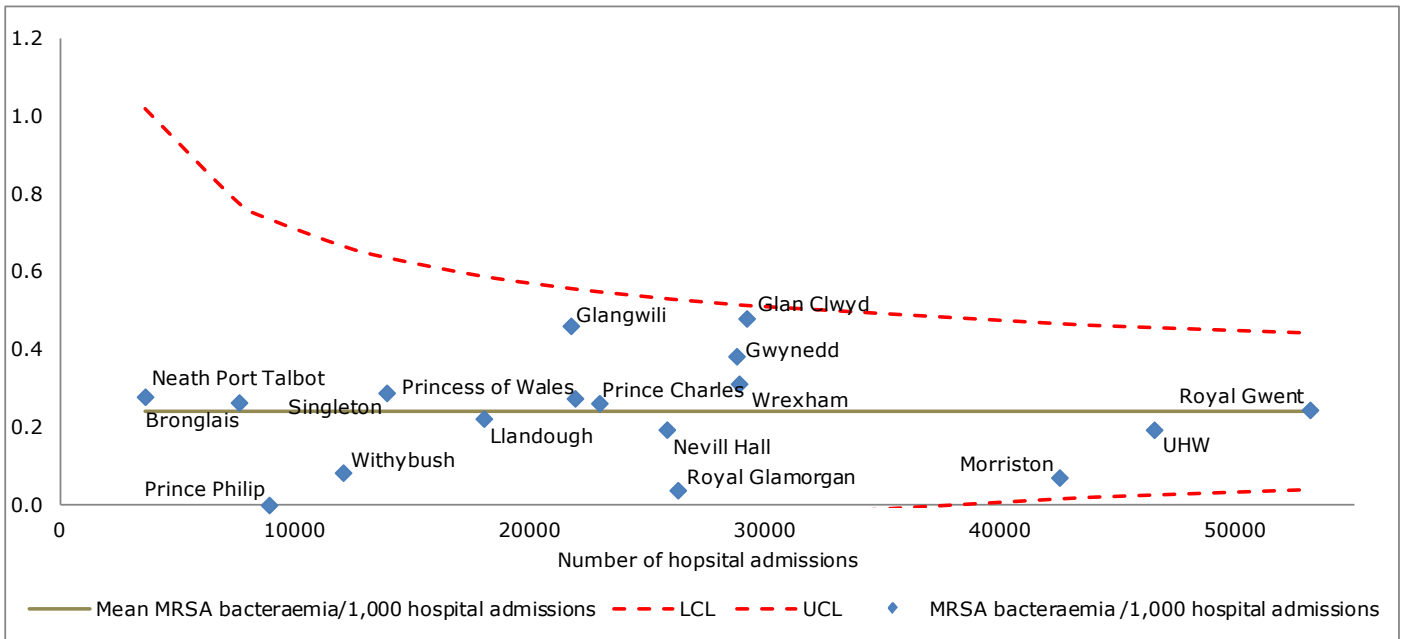
**Figure 2.6. Singleton Hospital monthly and 12 month moving average rates of MRSA bacteraemia per 1,000 hospital admissions, Apr 10 – Mar 16\***



\*12 month moving average rates are shown from Mar 11 as this is when the first full FY of data is complete

**Abertawe Bro Morgannwg University Health Board**

**Figure 2.7. Rates of MRSA bacteraemia per 1,000 hospital admissions by acute hospital, 2015/16 FY**



### **3. MSSA (meticillin-sensitive *Staphylococcus aureus*) bacteraemia**

#### MSSA bacteraemia surveillance notes for interpretation

- This report presents data on numbers of MSSA from blood cultures (bacteraemia) in Wales in the 2015/16 financial year, with trend data from 2010/11 (other than for Powys Health Board where data collection started in Apr 2011).
- Data is mainly collected via Datastore, a data warehouse system used by all microbiology laboratories in Wales. This data is supplemented manually with MSSA bacteraemia specimens from patients in Powys Health Board where the laboratory used for processing the specimen is in England.
- Data is extracted for the surveillance scheme using the following criteria:
  - *Staphylococcus aureus* (*S. aureus*) was identified from a blood culture sample
  - The sample was not taken from a patient in a private hospital, a privately run dialysis unit or post-mortem
  - Multiple positive samples from the same patient within a 14 day period are excluded as duplicates
- *S. aureus* positive blood cultures are assigned as MRSA (meticillin-resistant *S. aureus*) or MSSA (meticillin-sensitive *S. aureus*) on the basis of sensitivity to the antibiotic flucloxacillin
- Hospital admission data has been supplied by NHS Wales Informatics Service (NWIS) from the Patient Episode Database for Wales (PEDW).
- Population data has been extracted from <https://statswales.wales.gov.uk/Catalogue/Population-and-Migration/Population/Estimates>
- Mid 2014 population estimates have been used to calculate the 2015/16 population rates. These rates will be updated when the mid 2015 population estimates become available.

**Wales MSSA bacteraemia, 2015/16 FY**

- 765 cases of MSSA bacteraemia have been reported for the 2015/16 FY. This is 1% increase in numbers compared to the previous FY. The rate of MSSA *bacteraemia* per 1,000 hospital admissions has decreased by 1%, from 1.70 to 1.72. (Table 3.1.)
- Compared to the previous FY, 3 of the 8 health boards/NHS Trust in Wales have achieved a reduction in numbers of MSSA bacteraemia. (Table 3.1.)
- Compared to the 2010/11 FY, there has been a 16% increase in the number of MSSA bacteraemia and a 17% increase in the rate of MSSA bacteraemia per 1,000 hospital admissions. (Table 3.2.)
- Compared to the 2010/11 FY, 3 of the 7 (data was not collected from Powys Teaching Health Board for this FY) health boards/NHS Trust in Wales have achieved a reduction in numbers of MSSA bacteraemia. (Table 3.2.)
- 98% (750) of cases were diagnosed in the 18 acute hospitals, 2% (13) diagnosed in non-acute hospitals and <1% (1) in non-hospital locations.
- 51% (387) of cases were diagnosed in hospital inpatient locations. The inpatient rate is 0.87 per 1,000 hospital admissions for this period.
- 41% (310) of MSSA bacteraemia were in female patients and 50% (384) were in patients aged 66+ for the 12 month period.
- The rate of MSSA bacteraemia per 100,000 population has increased by 1% compared to the previous FY, from 24.55 to 24.74. (Table 3.2.)
- Compared to 2010/11 FY, the rate of MSSA bacteraemia per 100,000 population has increased by 15%. (Table 3.2.)

**Table 3.1. Wales numbers of MSSA bacteraemia, percentage change in numbers (from 2014/15 and 2010/11 FYs) and rates per 1,000 hospital admissions and 100,000 population by health board, 2015/16 FY**

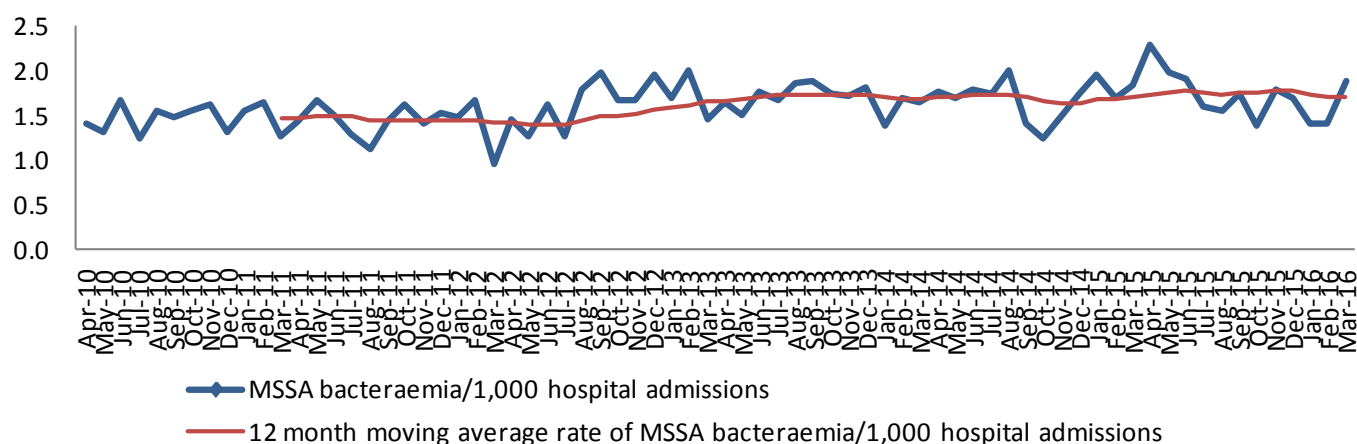
Health board	Number of MSSA bacteraemia	% change in number of MSSA bacteraemia from 2014/15 FY	% change in number of MSSA bacteraemia from 2010/11 FY	MSSA bacteraemia /1,000 hospital admissions	MSSA bacteraemia /100,000 population
<b>ABM</b>	165	12% (147)	36% (121)	1.94	31.55
<b>Aneurin Bevan</b>	93	-15% (110)	-18% (114)	1.01	16.02
<b>Betsi Cadwaladr</b>	134	-5% (141)	4% (129)	1.42	19.31
<b>Cardiff and Vale</b>	140	0% (140)	-10% (155)	2.11	29.05
<b>Cwm Taf</b>	115	17% (98)	135% (49)	2.23	38.86
<b>Hywel Dda</b>	113	-7% (121)	33% (85)	2.16	29.43
<b>Powys</b>	0	=N/A (0)	N/A	0.00	0.00
<b>Velindre</b>	5	150% (2)	-17% (6)	2.66	N/A
<b>Wales</b>	<b>765</b>	<b>1% (759)</b>	<b>16% (659)</b>	<b>1.72</b>	<b>24.74</b>
Wales average	96			1.69	23.46
Wales median	114			2.03	29.05

**Table 3.2. Wales numbers and rates of MSSA bacteraemia per 1,000 hospital admissions and 100,000 population, Apr 10 – Mar 16**

Mth/Yr	Number of MSSA bacteraemia	Number of hospital admissions	MSSA bacteraemia/ 1,000 hospital admissions	Population*	MSSA bacteraemia/ 100,000 population
<b>2015/16 FY</b>	<b>765</b>	<b>444720</b>	<b>1.72</b>	<b>3092036</b>	<b>24.74</b>
Mar 16	66	35090	1.88	261894	25.20
Feb 16	52	36825	1.41	244997	21.22
Jan 16	53	37817	1.40	261894	20.24
Dec 15	64	37745	1.70	261894	24.44
Nov 15	68	37708	1.80	253446	26.83
Oct 15	53	37962	1.40	261894	20.24
Sep 15	65	37284	1.74	253446	25.65
Aug 15	56	36103	1.55	261894	21.38
Jul 15	62	38641	1.60	261894	23.67
Jun 15	72	37534	1.92	253446	28.41
May 15	72	36186	1.99	261894	27.49
Apr 15	82	35825	2.29	253446	32.35
<b>2014/15 FY</b>	<b>759</b>	<b>446699</b>	<b>1.70</b>	<b>3092036</b>	<b>24.55</b>
<b>2013/14 FY</b>	<b>751</b>	<b>442821</b>	<b>1.70</b>	<b>3082412</b>	<b>24.36</b>
<b>2012/13 FY</b>	<b>728</b>	<b>439792</b>	<b>1.66</b>	<b>3074067</b>	<b>23.68</b>
<b>2011/12 FY</b>	<b>651</b>	<b>455772</b>	<b>1.43</b>	<b>3063758</b>	<b>21.25</b>
<b>2010/11 FY</b>	<b>659</b>	<b>448561</b>	<b>1.47</b>	<b>3049971</b>	<b>21.61</b>

\*Monthly population = (Total population/Number of days in year) x Number of days in month

**Figure 3.1. Wales monthly and 12 month moving average rates of MSSA bacteraemia per 1,000 hospital admissions, Apr 10 – Mar 16\***



\*12 month moving average rates are shown from Mar 11 as this is when the first full FY of data is complete



**Abertawe Bro Morgannwg University**  
**Health Board**

**Abertawe Bro Morgannwg University Health Board MSSA bacteraemia, 2015/16 FY**

- 165 cases of MSSA bacteraemia have been reported for the 2015/16 FY in this health board. This is a 12% increase in numbers compared to the previous FY. The rate of MSSA bacteraemia per 1,000 hospital admissions has increased by 14%, from 1.70 to 1.94. (Table 3.4.) The rate of MSSA bacteraemia per 1,000 hospital admissions in Wales has increased by 1% for the same period.
- Compared to the 2010/11 FY, there has been a 36% increase in the number of MSSA bacteraemia and a 41% increase in the rate of MSSA bacteraemia per 1,000 hospital admissions in this health board. (Table 3.5.) The rate of MSSA bacteraemia per 1,000 hospital admissions in Wales has increased by 17%.
- 99% (164) of the cases were diagnosed in the 4 acute hospitals in this health board and 1% (1) in non-hospital locations. (Table 1.9.)
- 55% (91) of cases in this health board were diagnosed in hospital inpatient locations. The inpatient rate is 1.07 per 1,000 hospital admissions for this period.
- 34% (56) of MSSA bacteraemia in this health board were in female patients and 48% (80) were in patients aged 66+ for the 12 month period.
- The rate of MSSA bacteraemia per 100,000 population has increased by 12% compared to the equivalent period last year, from 28.11 to 31.55. (Table 3.5.) The rate of MSSA bacteraemia per 100,000 population in Wales has increased by 1% for the same period.
- Compared to the 2010/11 FY, the rate of MSSA bacteraemia per 100,000 population has increased by 34% in this health board. (Table 3.5.) The rate of MSSA bacteraemia per 100,000 population in Wales has increased by 15%.

**Table 3.4. Abertawe Bro Morgannwg University Health Board numbers of MSSA bacteraemia, percentage change in numbers (from 2014/15 and 2010/11 FYs) and rates per 1,000 hospital admissions and 100,000 population by acute hospital, 2015/16 FY**

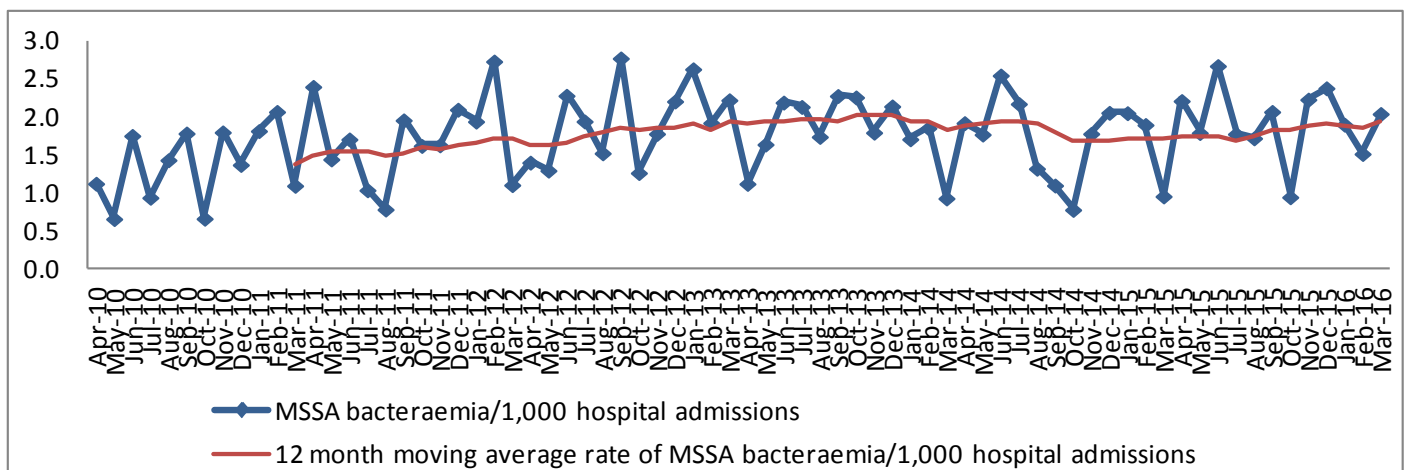
Health board/ hospital	Number of MSSA bacteraemia	% change in number of MSSA bacteraemia from 2014/15 FY	% change in number of MSSA bacteraemia from 2010/11 FY	MSSA bacteraemia /1,000 hospital admissions	MSSA bacteraemia /100,000 population
Morrison	93	16% (80)	69% (55)	2.19	N/A
Neath Port Talbot	3	50% (2)	-67% (9)	0.84	N/A
Princess of Wales	36	16% (31)	6% (34)	1.65	N/A
Singleton	32	0% (32)	39% (23)	2.31	N/A
<b>ABM</b>	<b>165</b>	<b>12% (147)</b>	<b>36% (121)</b>	<b>1.94</b>	<b>31.55</b>
<b>Wales</b>	<b>765</b>	<b>1% (759)</b>	<b>16% (659)</b>	<b>1.72</b>	<b>24.74</b>

**Table 3.5. Abertawe Bro Morgannwg University Health Board numbers and rates of MSSA bacteraemia per 1,000 hospital admissions and 100,000 population, Apr 10 – Mar 16**

Mth/Yr	Number of MSSA bacteraemia	Number of hospital admissions	MSSA bacteraemia/1,000 hospital admissions	Population*	MSSA bacteraemia/100,000 population
<b>2015/16 FY</b>	<b>165</b>	<b>84909</b>	<b>1.94</b>	<b>523001</b>	<b>31.55</b>
Mar 16	14	6828	2.05	44298	31.60
Feb 16	11	7215	1.52	41440	26.54
Jan 16	14	7332	1.91	44298	31.60
Dec 15	17	7118	2.39	44298	38.38
Nov 15	16	7145	2.24	42869	37.32
Oct 15	7	7327	0.96	44298	15.80
Sep 15	15	7220	2.08	42869	34.99
Aug 15	12	6936	1.73	44298	27.09
Jul 15	13	7279	1.79	44298	29.35
Jun 15	19	7088	2.68	42869	44.32
May 15	12	6666	1.80	44298	27.09
Apr 15	15	6755	2.22	42869	34.99
<b>2014/15 FY</b>	<b>147</b>	<b>86226</b>	<b>1.70</b>	<b>523001</b>	<b>28.11</b>
<b>2013/14 FY</b>	<b>155</b>	<b>85044</b>	<b>1.82</b>	<b>520710</b>	<b>29.77</b>
<b>2012/13 FY</b>	<b>169</b>	<b>87341</b>	<b>1.93</b>	<b>519481</b>	<b>32.53</b>
<b>2011/12 FY</b>	<b>157</b>	<b>92028</b>	<b>1.71</b>	<b>517981</b>	<b>30.31</b>
<b>2010/11 FY</b>	<b>121</b>	<b>87896</b>	<b>1.38</b>	<b>515420</b>	<b>23.48</b>

\*Monthly population = (Total population/Number of days in year) x Number of days in month

**Figure 3.2. Abertawe Bro Morgannwg University Health Board monthly and 12 month moving average rates of MSSA bacteraemia per 1,000 hospital admissions, Apr 10 – Mar 16\***



\*12 month moving average rates are shown from Mar 11 as this is when the first full FY of data is complete

**Abertawe Bro Morgannwg University**  
**Health Board**

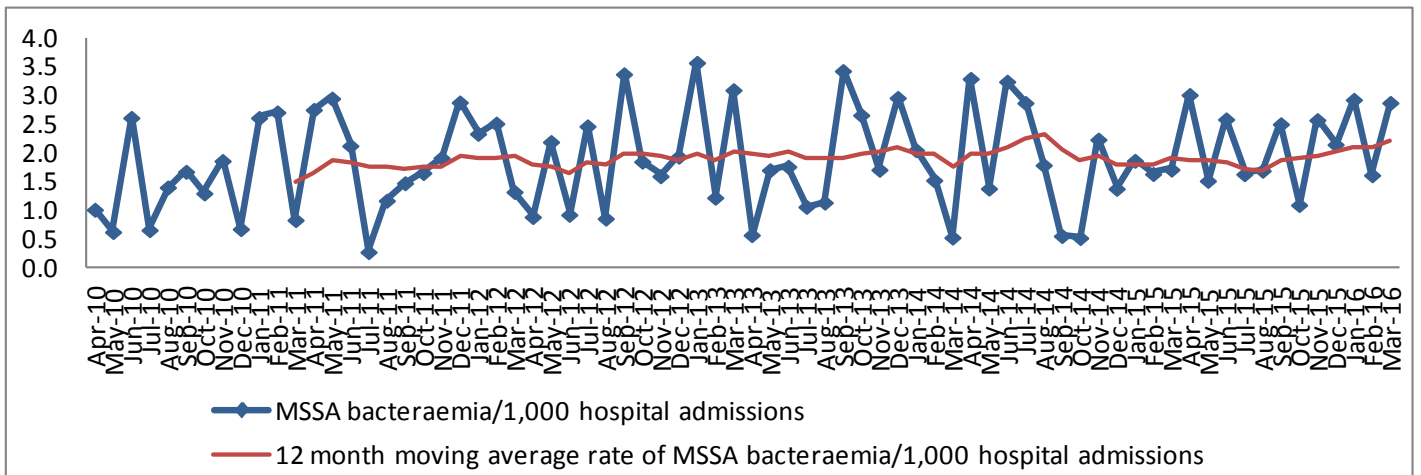
**Morrison Hospital MSSA bacteraemia, 2015/16 FY**

- 93 cases of MSSA bacteraemia have been reported for the 2015/16 FY in this hospital. This is a 16% increase in numbers compared to the previous FY. (Table 3.4.) The rate of MSSA bacteraemia per 1,000 hospital admissions has increased by 15%, from 1.90 to 2.19. (Table 3.6.)
- Compared to Apr – Sep 10, there has been a 69% increase in the number of MSSA bacteraemia and a 45% increase in the rate of MSSA bacteraemia per 1,000 hospital admissions in this hospital. (Table 3.6.)
- The rate of MSSA bacteraemia in this hospital is not significantly different from the rates for the acute hospitals in Wales for this 12 month period. (Figure 3.7.)
- 53% (49) of the cases were diagnosed in hospital inpatient locations. The inpatient rate is 1.15 per 1,000 hospital admissions for this period.

**Table 3.6. Morrison Hospital numbers and rates of MSSA bacteraemia per 1,000 hospital admissions, Apr 10 – Mar 16**

Mth/Yr	Number of MSSA bacteraemia	Number of hospital admissions	MSSA bacteraemia/1,000 hospital admissions
<b>2015/16 FY</b>	<b>93</b>	<b>42472</b>	<b>2.19</b>
Mar 16	10	3466	2.89
Feb 16	6	3687	1.63
Jan 16	11	3743	2.94
Dec 15	8	3703	2.16
Nov 15	9	3481	2.59
Oct 15	4	3606	1.11
Sep 15	9	3580	2.51
Aug 15	6	3517	1.71
Jul 15	6	3648	1.64
Jun 15	9	3464	2.60
May 15	5	3269	1.53
Apr 15	10	3308	3.02
<b>2014/15 FY</b>	<b>80</b>	<b>42150</b>	<b>1.90</b>
<b>2013/14 FY</b>	<b>74</b>	<b>41883</b>	<b>1.77</b>
<b>2012/13 FY</b>	<b>84</b>	<b>41454</b>	<b>2.03</b>
<b>2011/12 FY</b>	<b>80</b>	<b>41091</b>	<b>1.95</b>
<b>2010/11 FY</b>	<b>55</b>	<b>36538</b>	<b>1.51</b>

**Figure 3.3. Morriston Hospital monthly and 12 month moving average rates of MSSA bacteraemia per 1,000 hospital admissions, Apr 10 – Mar 16\***



\*12 month moving average rates are shown from Mar 11 as this is when the first full FY of data is complete

**Abertawe Bro Morgannwg University**  
**Health Board**

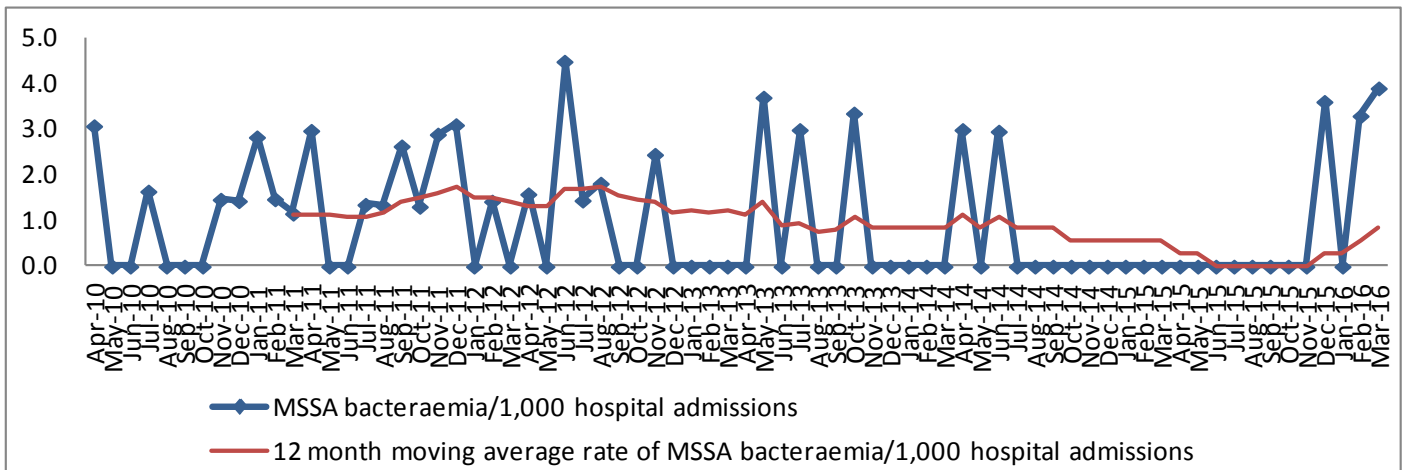
**Neath Port Talbot Hospital MSSA bacteraemia, 2015/16 FY**

- 3 cases of MSSA bacteraemia have been reported for the 2015/16 FY in this hospital. This is a 50% increase in numbers compared to the previous FY. (Table 3.4.) The rate of MSSA bacteraemia per 1,000 hospital admissions has increased by 48%, from 0.57 to 0.84. (Table 3.7.)
- Compared to the 2010/11 FY, there has been a 67% decrease in the number of MSSA bacteraemia and a 24% decrease in the rate of MSSA bacteraemia per 1,000 hospital admissions in this hospital. (Table 3.7.)
- The rate of MSSA bacteraemia in this hospital is not significantly different from the rates for the acute hospitals in Wales for this 12 month period. (Figure 3.7.)
- All of the cases were diagnosed in hospital inpatient locations.

**Table 3.7. Neath Port Talbot Hospital numbers and rates of MSSA bacteraemia per 1,000 hospital admissions, Apr 10 – Mar 16**

Mth/Yr	Number of MSSA bacteraemia	Number of hospital admissions	MSSA bacteraemia/1,000 hospital admissions
<b>2015/16 FY</b>	<b>3</b>	<b>3590</b>	<b>0.84</b>
Mar 16	1	256	3.91
Feb 16	1	303	3.30
Jan 16	0	316	0.00
Dec 15	1	277	3.61
Nov 15	0	301	0.00
Oct 15	0	311	0.00
Sep 15	0	304	0.00
Aug 15	0	290	0.00
Jul 15	0	331	0.00
Jun 15	0	326	0.00
May 15	0	282	0.00
Apr 15	0	293	0.00
<b>2014/15 FY</b>	<b>2</b>	<b>3531</b>	<b>0.57</b>
<b>2013/14 FY</b>	<b>3</b>	<b>3596</b>	<b>0.83</b>
<b>2012/13 FY</b>	<b>7</b>	<b>5743</b>	<b>1.22</b>
<b>2011/12 FY</b>	<b>12</b>	<b>8602</b>	<b>1.40</b>
<b>2010/11 FY</b>	<b>9</b>	<b>8203</b>	<b>1.10</b>

**Figure 3.4. Neath Port Talbot Hospital monthly and 12 month moving average rates MSSA bacteraemia per 1,000 hospital admissions, Apr 10 – Mar 16\***



\*12 month moving average rates are shown from Mar 11 as this is when the first full FY of data is complete

**Abertawe Bro Morgannwg University**  
**Health Board**

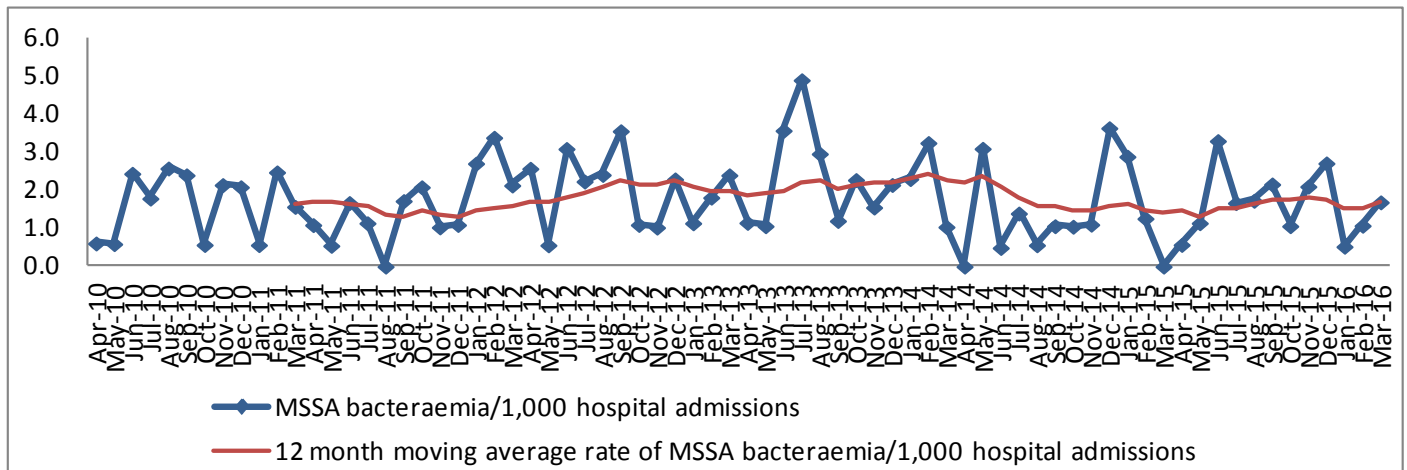
**Princess of Wales Hospital MSSA bacteraemia, 2015/16 FY**

- 36 cases of MSSA bacteraemia have been reported for the 2015/16 FY in this hospital. This is a 16% increase in numbers compared to the previous FY. (Table 3.4.) The rate of MSSA bacteraemia per 1,000 hospital admissions has increased by 19%, from 1.38 to 1.65. (Table 3.8.)
- Compared to the 2010/11 FY, there has been a 6% increase in the number of MSSA bacteraemia and a <1% increase in the rate of MSSA bacteraemia per 1,000 hospital admissions in this hospital. (Table 3.8.)
- The rate of MSSA bacteraemia in this hospital is not significantly different from the rates for the acute hospitals in Wales for this 12 month period. (Figure 3.7.)
- 53% (19) of the cases were diagnosed in hospital inpatient locations. The inpatient rate is 0.87 per 1,000 hospital admissions for this period.

**Table 3.8. Princess of Wales Hospital numbers and rates of MSSA bacteraemia per 1,000 hospital admissions, Apr 10 – Mar 16**

Mth/Yr	Number of MSSA bacteraemia	Number of hospital admissions	MSSA bacteraemia/1,000 hospital admissions
<b>2015/16 FY</b>	<b>36</b>	<b>21872</b>	<b>1.65</b>
Mar 16	3	1775	1.69
Feb 16	2	1860	1.08
Jan 16	1	1912	0.52
Dec 15	5	1842	2.71
Nov 15	4	1901	2.10
Oct 15	2	1881	1.06
Sep 15	4	1851	2.16
Aug 15	3	1733	1.73
Jul 15	3	1796	1.67
Jun 15	6	1817	3.30
May 15	2	1752	1.14
Apr 15	1	1752	0.57
<b>2014/15 FY</b>	<b>31</b>	<b>22498</b>	<b>1.38</b>
<b>2013/14 FY</b>	<b>48</b>	<b>21238</b>	<b>2.26</b>
<b>2012/13 FY</b>	<b>41</b>	<b>20683</b>	<b>1.98</b>
<b>2011/12 FY</b>	<b>34</b>	<b>21769</b>	<b>1.56</b>
<b>2010/11 FY</b>	<b>34</b>	<b>20698</b>	<b>1.64</b>

**Figure 3.5. Princess of Wales Hospital monthly and 12 month moving average rates of MSSA bacteraemia per 1,000 hospital admissions, Apr 10 – Mar 16\***



\*12 month moving average rates are shown from Mar 11 as this is when the first full FY of data is complete



**Abertawe Bro Morgannwg University**  
**Health Board**

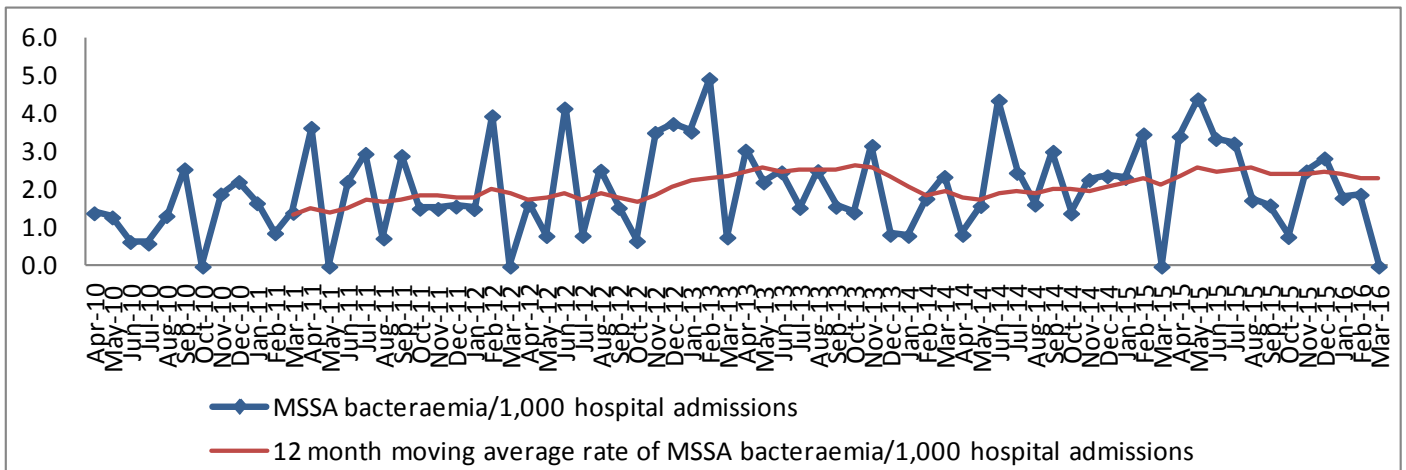
**Singleton Hospital MSSA bacteraemia, 2015/16 FY**

- 32 cases of MSSA bacteraemia have been reported for the 2015/16 FY in this hospital. This is the same number compared to the previous FY. (Table 3.4.) The rate of MSSA bacteraemia per 1,000 hospital admissions has increased by 9%, from 2.13 to 2.31. (Table 3.9.)
- Compared to the 2010/11 FY, there has been a 39% increase in the number of MSSA bacteraemia and a 75% increase in the rate of MSSA bacteraemia per 1,000 hospital admissions in this hospital. (Table 3.9.)
- The rate of MSSA bacteraemia in this hospital is not significantly different from the rates for the acute hospitals in Wales for this 12 month period. (Figure 3.7.)
- 63% (20) of the cases were diagnosed in hospital inpatient locations. The inpatient rate is 1.44 per 1,000 hospital admissions for this period.

**Table 3.9. Singleton Hospital numbers and rates of MSSA bacteraemia per 1,000 hospital admissions, Apr 10 – Mar 16**

Mth/Yr	Number of MSSA bacteraemia	Number of hospital admissions	MSSA bacteraemia/1,000 hospital admissions
<b>2015/16 FY</b>	<b>32</b>	<b>13863</b>	<b>2.31</b>
Mar 16	0	1033	0.00
Feb 16	2	1058	1.89
Jan 16	2	1109	1.80
Dec 15	3	1054	2.85
Nov 15	3	1198	2.50
Oct 15	1	1287	0.78
Sep 15	2	1242	1.61
Aug 15	2	1150	1.74
Jul 15	4	1235	3.24
Jun 15	4	1192	3.36
May 15	5	1136	4.40
Apr 15	4	1169	3.42
<b>2014/15 FY</b>	<b>32</b>	<b>15056</b>	<b>2.13</b>
<b>2013/14 FY</b>	<b>30</b>	<b>15131</b>	<b>1.98</b>
<b>2012/13 FY</b>	<b>37</b>	<b>15583</b>	<b>2.37</b>
<b>2011/12 FY</b>	<b>30</b>	<b>15993</b>	<b>1.88</b>
<b>2010/11 FY</b>	<b>23</b>	<b>17473</b>	<b>1.32</b>

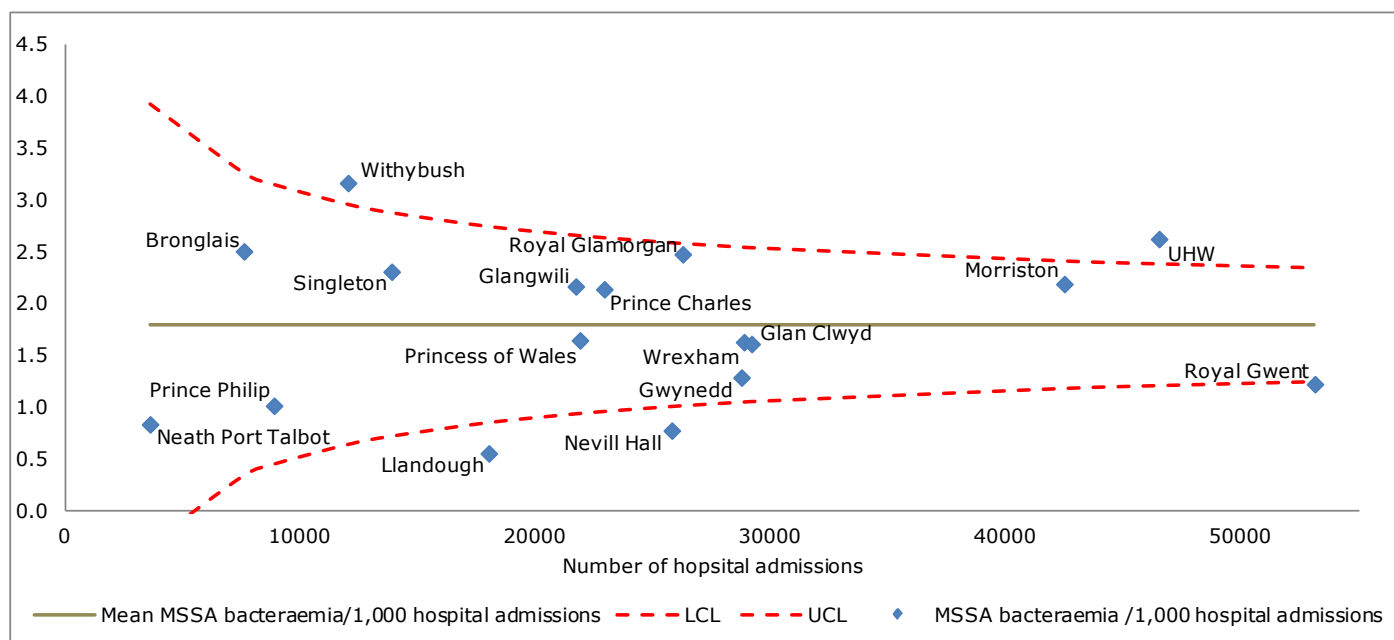
**Figure 3.6. Singleton Hospital monthly and 12 month moving average rates of MSSA bacteraemia per 1,000 hospital admissions, Apr 10 – Mar 16\***



\*12 month moving average rates are shown from Mar 11 as this is when the first full FY of data is complete

**Abertawe Bro Morgannwg University Health Board**

**Figure 3.7. Rates of MSSA bacteraemia per 1,000 hospital admissions by acute hospital, 2015/16 FY**



**Table 3.10. Abertawe Bro Morgannwg University Health Board, numbers of MSSA bacteraemia in non-acute hospital locations, 2015/16 FY**

Location	Number of MSSA bacteraemia
Other community location	1