



**GIG**  
CYMRU  
**NHS**  
WALES

Iechyd Cyhoeddus  
Cymru  
Public Health  
Wales

# **Public Health Wales Vaccine Preventable Disease Programme**

## **Uptake of Seasonal Influenza Vaccination – HB specific reports**

**Aneurin Bevan Health Board**

**2010/2011**

## 1. Background

The aim of the seasonal influenza immunisation campaign is to minimise flu related morbidity, mortality, and hospital admissions.

In Wales in 2010/11, free seasonal influenza immunisation was offered to all people aged 65 years and over, people aged between 6 months and 65 years in clinical risk groups (chronic respiratory disease, chronic heart disease, chronic renal disease, chronic liver disease, chronic neurological conditions, diabetes mellitus, immunosuppression, and pregnant women), residents of long-stay care homes, and those who were the main carer for an elderly or disabled person whose welfare may be at risk if the carer fell ill.

For the 2010/11 seasonal influenza immunisation campaign the national uptake target was raised to the WHO uptake target of 75% in recommended groups. For the 2010/11 season a 75% uptake target was also put in place for those younger than 65 years in 'at-risk' groups.

This report has been prepared using influenza immunisation data collected directly from practices using the Audit+ Data Quality System. The report provides a description of the spread in uptake of influenza immunisation at General Practice level and allows HB Immunisation Coordinators, Nursing and Medical leads, Directors of Public Health, and Public Health Wales to identify possible problems with return of immunisation data or low uptake of influenza immunisation.

This report reflects data on immunisations given and recorded on GP systems up to 12<sup>th</sup> April 2011, collated via Audit+. Data was received from 95.7% of practices in Aneurin Bevan HB

## 2. Summary of uptake in Aneurin Bevan HB

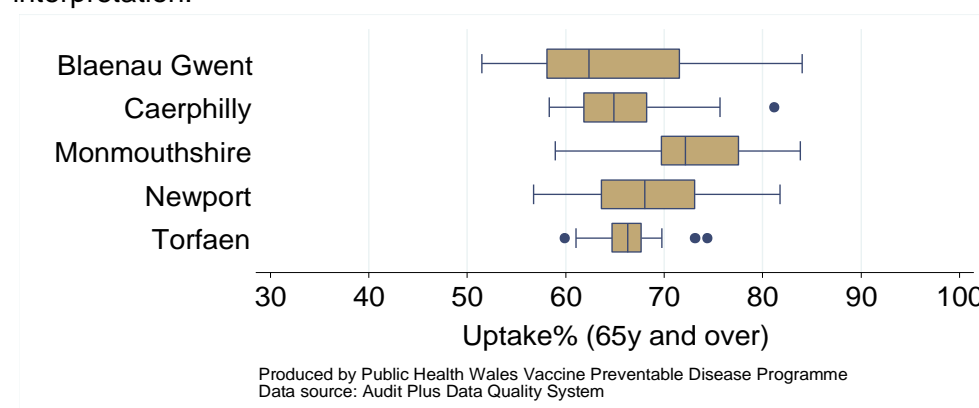
**Table 1.** Summary data for Aneurin Bevan Local Authorities (patients aged 65y and over and patients aged under 65y at risk).

Patients aged 65y and over						
	Practices achieving 75%	Practices not submitting	Total practices	Lowest practice uptake (%)	Highest practice uptake (%)	Overall LA uptake (%)
Blaenau Gwent	2	0	15	51.5	84.0	63.2
Caerphilly	2	2	29	58.3	81.2	64.5
Monmouthshire	5	2	14	58.9	83.8	71.6
Newport	5	0	22	56.7	81.8	67.6
Torfaen	0	0	13	59.9	74.4	66.1
<b>Aneurin Bevan total</b>	<b>14</b>	<b>4</b>	<b>93</b>	<b>51.5</b>	<b>84.0</b>	<b>66.5</b>

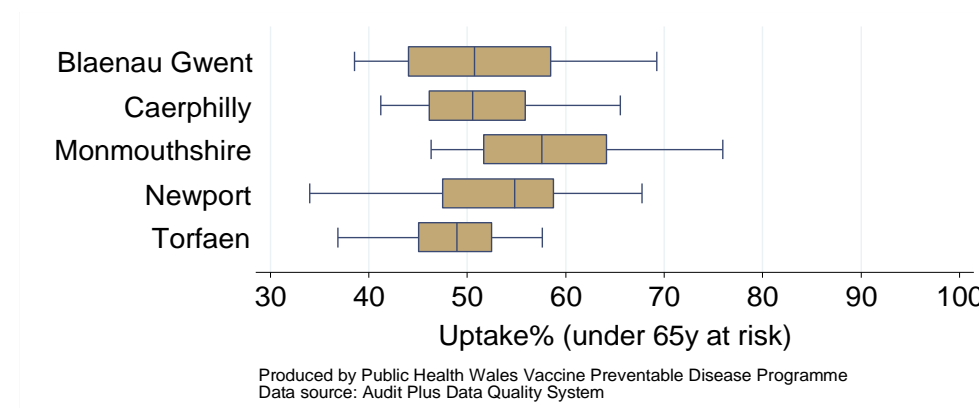
  

Patients aged under 65y at risk						
	Practices achieving 75%	Practices not submitting	Total practices	Lowest practice uptake (%)	Highest practice uptake (%)	Overall LA uptake (%)
Blaenau Gwent	0	0	15	38.5	69.2	50.5
Caerphilly	0	2	29	41.2	65.5	49.6
Monmouthshire	1	2	14	46.3	76.0	55.8
Newport	0	0	22	34.0	67.7	50.8
Torfaen	0	0	13	36.8	57.6	48.1
<b>Aneurin Bevan total</b>	<b>1</b>	<b>4</b>	<b>93</b>	<b>34.0</b>	<b>76.0</b>	<b>50.5</b>

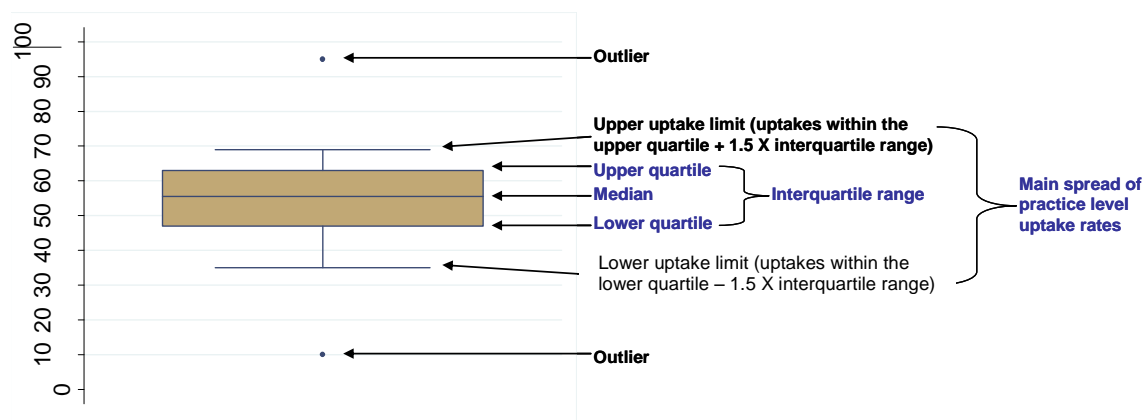
**Figure 1.** Box and whisker plot showing distributions of practice seasonal influenza immunisation uptake rates (patients aged 65y and over). See page 4 for notes on interpretation.



**Figure 2.** Box and whisker plot showing distributions of practice seasonal influenza immunisation uptake rates (patients aged under 65y at risk). See page 4 for notes on interpretation.



**Figure 3.** Notes on interpretation - Diagram of a box and whisker plot.



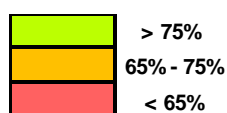
Figures 1 and 2 summarise the range of uptake rates within practices based in LHB Local Authority areas. Figure 3 provides an illustration as to how the box and whisker plots are constructed.

The box and whisker plots above show the spread of uptake rates of practices within HB Local Authority (LA) areas. The line inside the shaded box represents the median practice uptake rate (half of the LA practices have an uptake higher than the median value and half have an uptake lower than the median value). The shaded box represents the spread in uptake rates of the central 50% of practices, this is called the interquartile range. The whiskers extending above and below the shaded box represent the spread in practice uptake rates for the majority of practices within the LA. Any practices with uptake rates that are very different from the majority of practices within the LA are termed 'outliers' and appear as dots outside the whiskers.

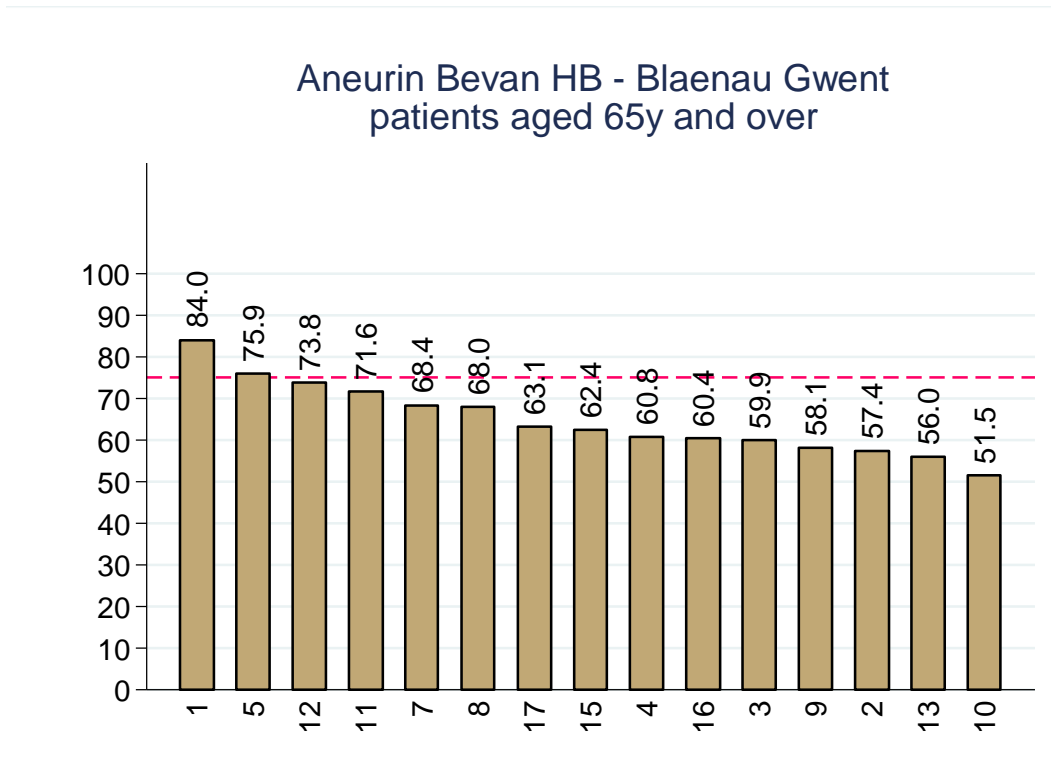
### 3. Practice level data

**Table 2.** Practice level influenza immunisation uptake data for Blaenau Gwent Local Authority based practices.

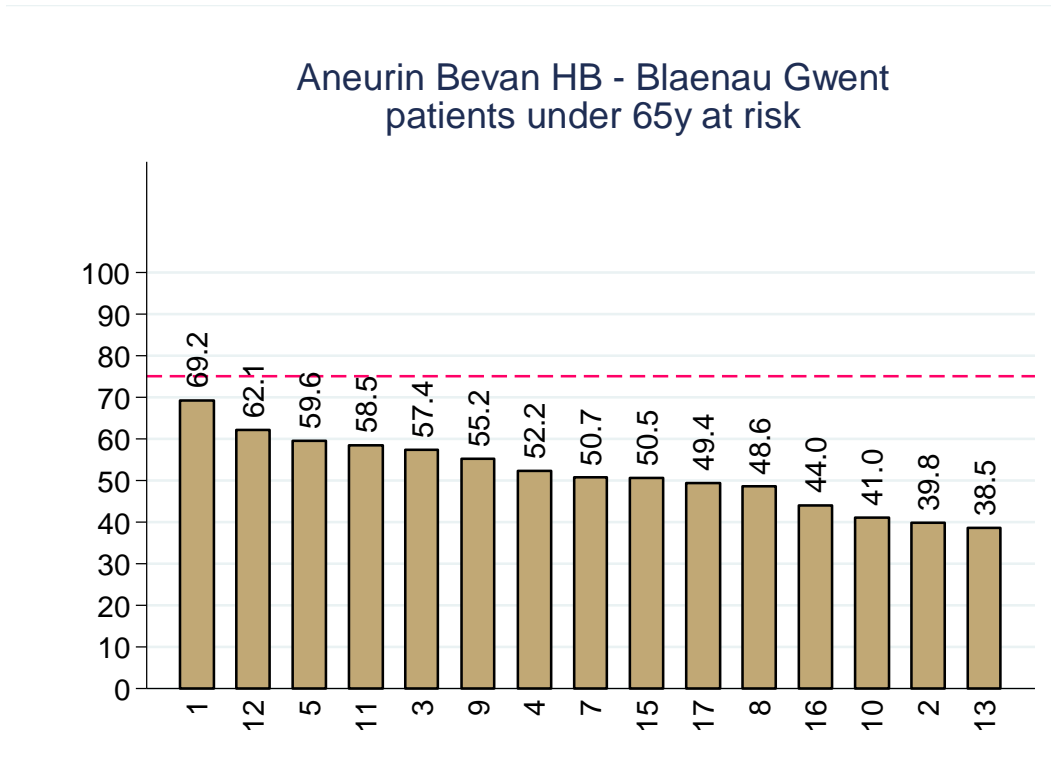
Local Authority	Practice code	Patients 65y and over			Patients under 65y at risk		
		(n)	Immunised		(n)	Immunised	
			(n)	(%)		(n)	(%)
Blaenau Gwent	1	594	499	84.0	286	198	69.2
Blaenau Gwent	5	535	406	75.9	485	289	59.6
Blaenau Gwent	12	351	259	73.8	227	141	62.1
Blaenau Gwent	11	528	378	71.6	265	155	58.5
Blaenau Gwent	7	1425	974	68.4	1096	556	50.7
Blaenau Gwent	8	550	374	68.0	354	172	48.6
Blaenau Gwent	17	651	411	63.1	443	219	49.4
Blaenau Gwent	15	1459	910	62.4	944	477	50.5
Blaenau Gwent	4	1084	659	60.8	756	395	52.2
Blaenau Gwent	16	757	457	60.4	445	196	44.0
Blaenau Gwent	3	966	579	59.9	500	287	57.4
Blaenau Gwent	9	1327	771	58.1	765	422	55.2
Blaenau Gwent	2	1128	647	57.4	844	336	39.8
Blaenau Gwent	13	1186	664	56.0	685	264	38.5
Blaenau Gwent	10	501	258	51.5	178	73	41.0



**Figure 3.** Practice level influenza immunisation uptake data for Blaenau Gwent Local Authority based practices (patients aged 65 years and over).

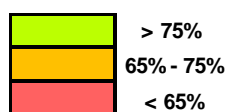


**Figure 4.** Practice level influenza immunisation uptake data for Blaenau Gwent Local Authority based practices (at risk patients aged under 65 years).

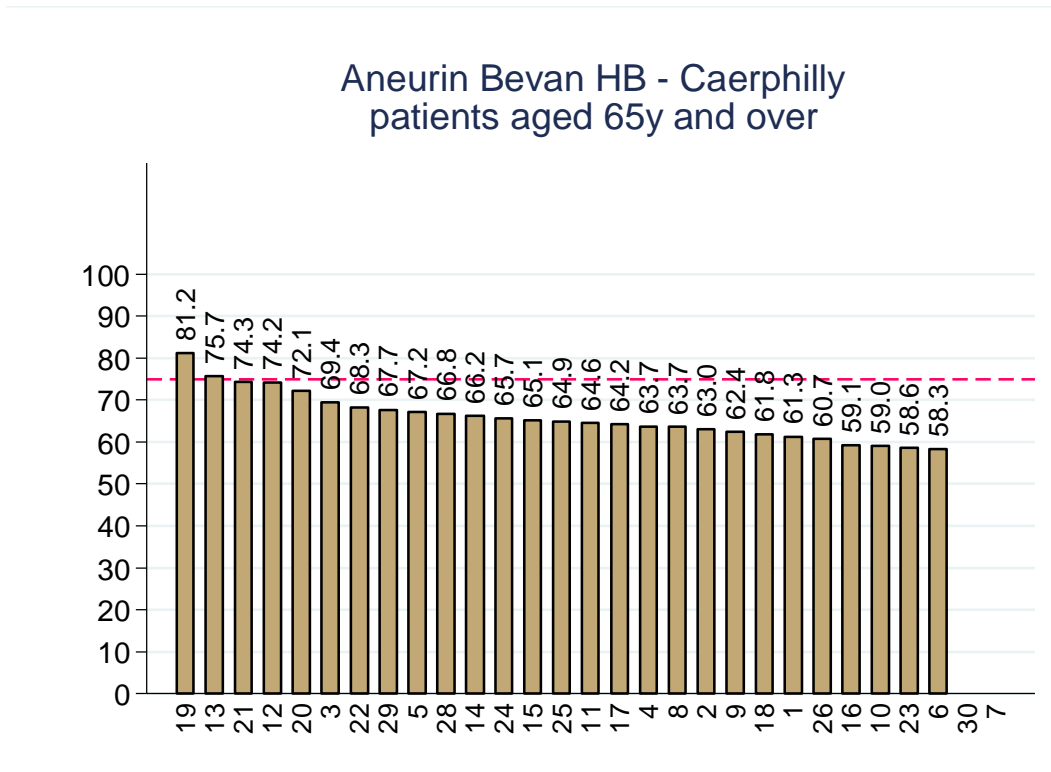


**Table 3.** Practice level influenza immunisation uptake data for Caerphilly Local Authority based practices.

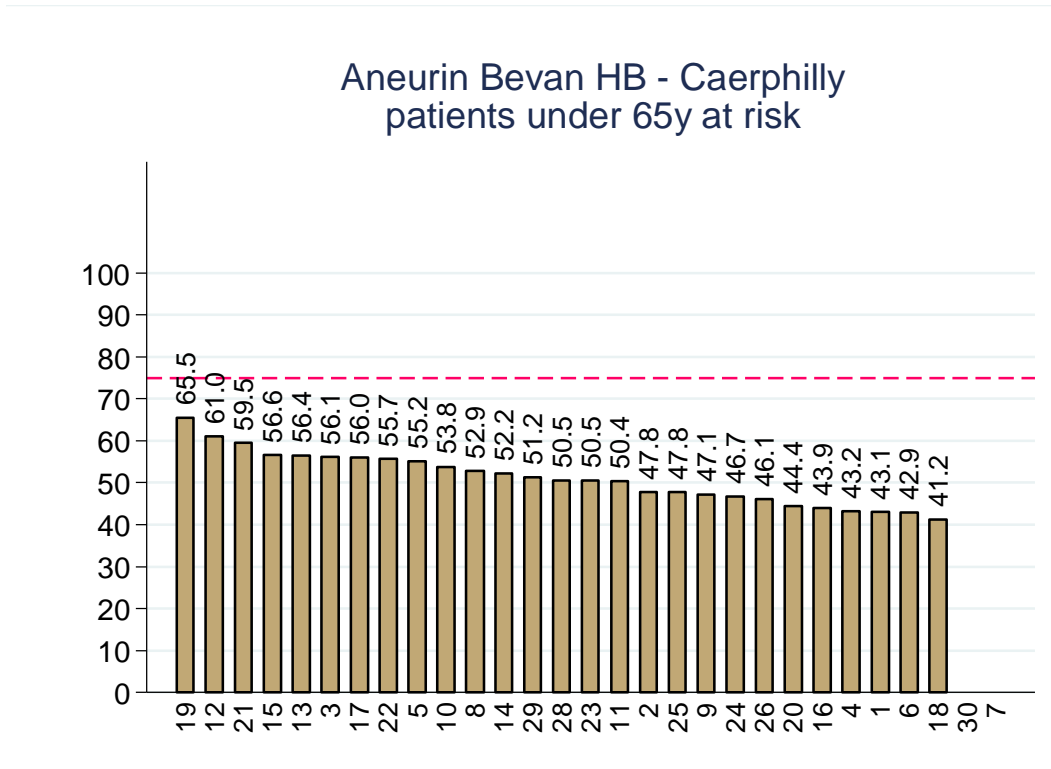
Local Authority	Practice code	Patients 65y and over			Patients under 65y at risk		
		(n)	Immunised		(n)	Immunised	
			(n)	(%)		(n)	(%)
Caerphilly	19	452	367	81.2	296	194	65.5
Caerphilly	13	543	411	75.7	583	329	56.4
Caerphilly	21	354	263	74.3	400	238	59.5
Caerphilly	12	295	219	74.2	362	221	61.0
Caerphilly	20	402	290	72.1	446	198	44.4
Caerphilly	3	366	254	69.4	253	142	56.1
Caerphilly	22	842	575	68.3	720	401	55.7
Caerphilly	29	396	268	67.7	203	104	51.2
Caerphilly	5	878	590	67.2	513	283	55.2
Caerphilly	28	1877	1253	66.8	837	423	50.5
Caerphilly	14	979	648	66.2	755	394	52.2
Caerphilly	24	2168	1424	65.7	1476	689	46.7
Caerphilly	15	1132	737	65.1	959	543	56.6
Caerphilly	25	1026	666	64.9	638	305	47.8
Caerphilly	11	1096	708	64.6	728	367	50.4
Caerphilly	17	1137	730	64.2	529	296	56.0
Caerphilly	4	2629	1675	63.7	1349	583	43.2
Caerphilly	8	460	293	63.7	367	194	52.9
Caerphilly	2	540	340	63.0	345	165	47.8
Caerphilly	9	1796	1121	62.4	1150	542	47.1
Caerphilly	18	1014	627	61.8	553	228	41.2
Caerphilly	1	834	511	61.3	492	212	43.1
Caerphilly	26	1522	924	60.7	997	460	46.1
Caerphilly	16	1121	663	59.1	758	333	43.9
Caerphilly	10	608	359	59.0	461	248	53.8
Caerphilly	23	788	462	58.6	469	237	50.5
Caerphilly	6	1454	848	58.3	1101	472	42.9
Caerphilly	30	Data not available					
Caerphilly	7	Data not available					



**Figure 5.** Practice level influenza immunisation uptake data for Caerphilly Local Authority based practices (patients aged 65 years and over).



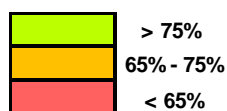
**Figure 6.** Practice level influenza immunisation uptake data for Caerphilly Local Authority based (at risk patients aged under 65 years).



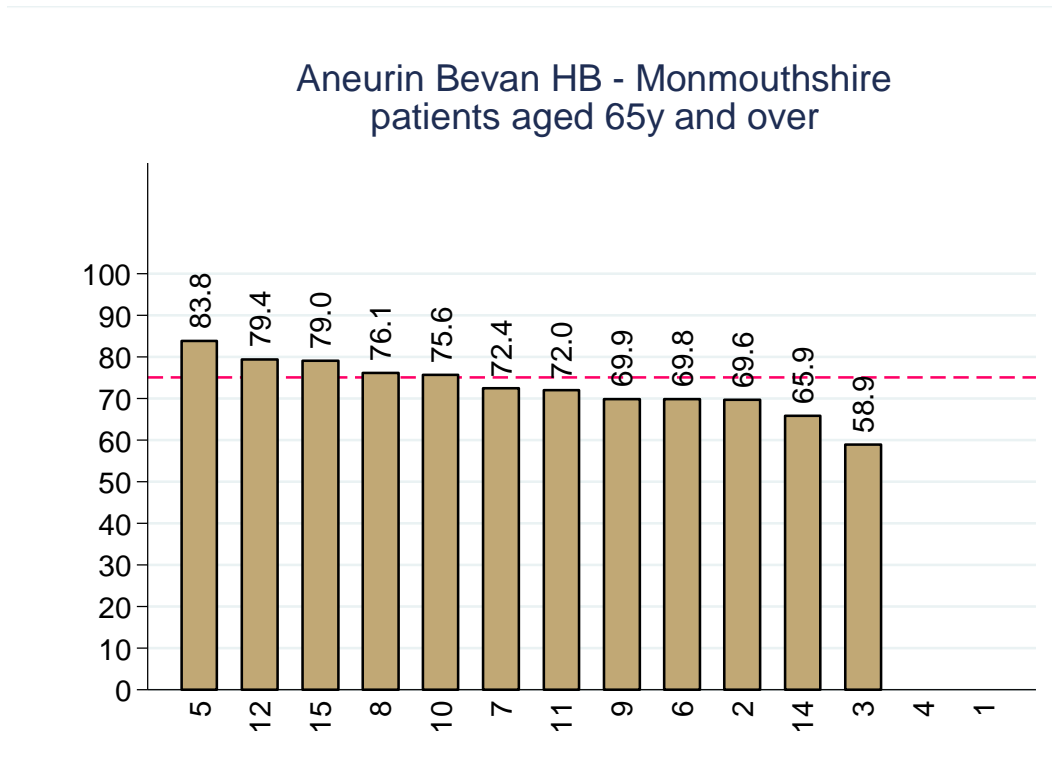


**Table 4.** Practice level influenza immunisation uptake data for Monmouthshire Local Authority based practices.

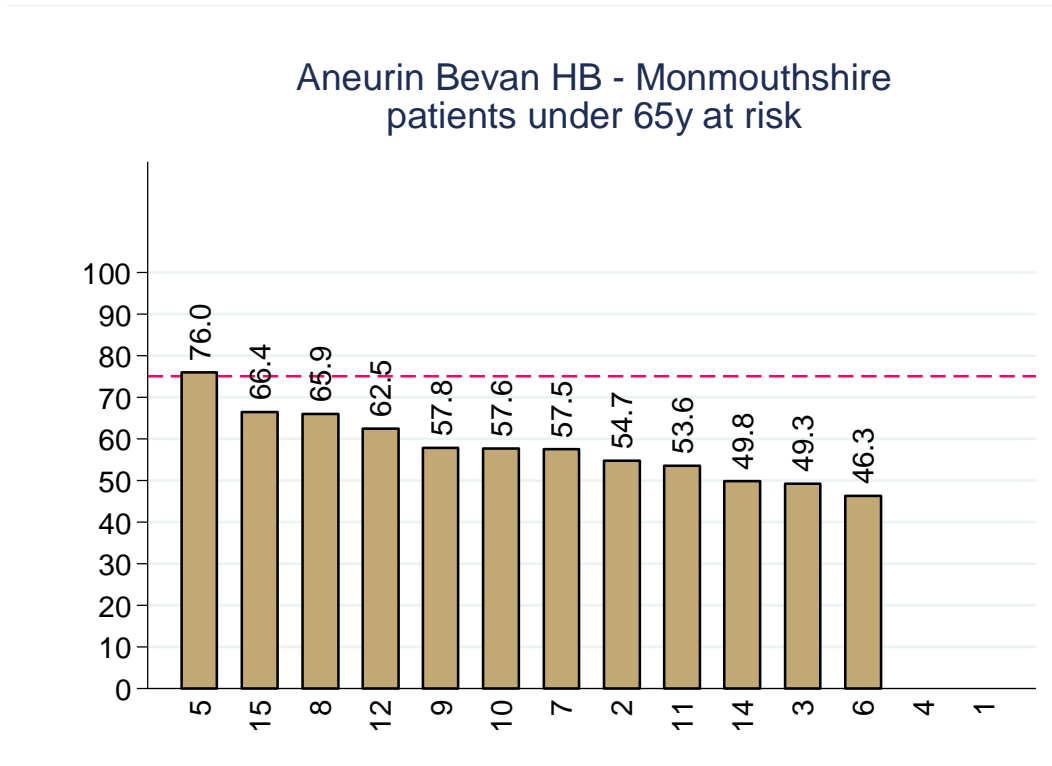
Local Authority	Practice code	Patients 65y and over			Patients under 65y at risk		
		(n)	Immunised		(n)	Immunised	
			(n)	(%)		(n)	(%)
Monmouthshire	5	352	295	83.8	183	139	76.0
Monmouthshire	12	1004	797	79.4	461	288	62.5
Monmouthshire	15	1235	976	79.0	607	403	66.4
Monmouthshire	8	503	383	76.1	182	120	65.9
Monmouthshire	10	480	363	75.6	184	106	57.6
Monmouthshire	7	2423	1754	72.4	1083	623	57.5
Monmouthshire	11	963	693	72.0	377	202	53.6
Monmouthshire	9	1593	1113	69.9	748	432	57.8
Monmouthshire	6	2709	1892	69.8	1045	484	46.3
Monmouthshire	2	510	355	69.6	254	139	54.7
Monmouthshire	14	2051	1351	65.9	880	438	49.8
Monmouthshire	3	555	327	58.9	341	168	49.3
Monmouthshire	4	Data not Available					
Monmouthshire	1	Data not Available					



**Figure 7.** Practice level influenza immunisation uptake data for Monmouthshire Local Authority based practices (patients aged 65 years and over).

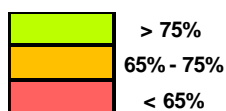


**Figure 8.** Practice level influenza immunisation uptake data for Monmouthshire Local Authority based (at risk patients aged under 65 years).

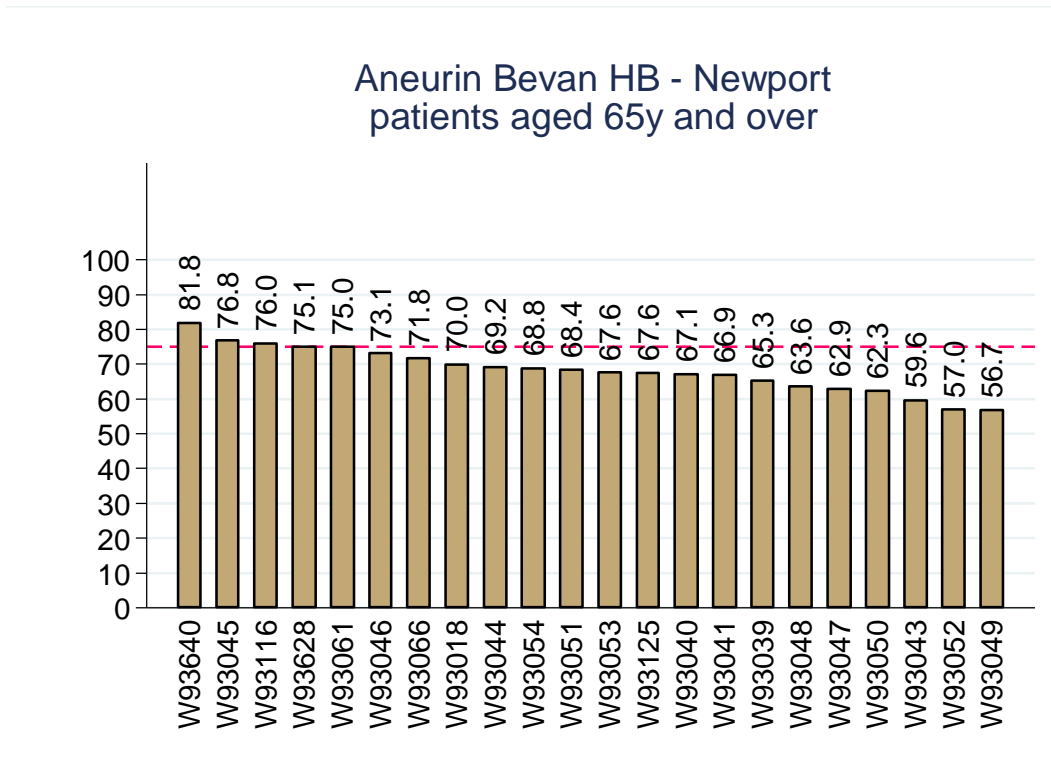


**Table 5.** Practice level influenza immunisation uptake data for Newport Local Authority based practices.

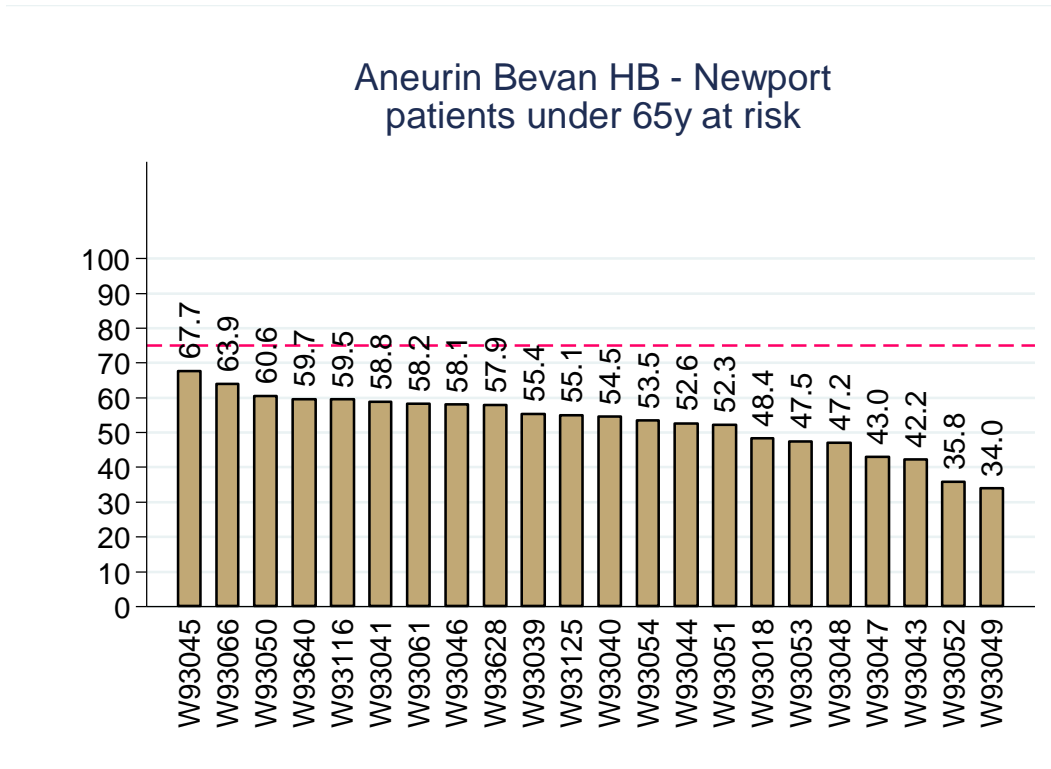
Local Authority	Practice code	Patients 65y and over			Patients under 65y at risk		
		(n)	Immunised		(n)	Immunised	
			(n)	(%)		(n)	(%)
Newport	W93640	571	467	81.8	414	247	59.7
Newport	W93045	1439	1105	76.8	716	485	67.7
Newport	W93116	408	310	76.0	321	191	59.5
Newport	W93628	433	325	75.1	340	197	57.9
Newport	W93061	2031	1523	75.0	845	492	58.2
Newport	W93046	689	504	73.1	432	251	58.1
Newport	W93066	241	173	71.8	147	94	63.9
Newport	W93018	1624	1136	70.0	852	412	48.4
Newport	W93044	988	684	69.2	724	381	52.6
Newport	W93054	2263	1558	68.8	1092	584	53.5
Newport	W93051	1004	687	68.4	771	403	52.3
Newport	W93053	2095	1416	67.6	1394	662	47.5
Newport	W93125	490	331	67.6	356	196	55.1
Newport	W93040	828	556	67.1	627	342	54.5
Newport	W93041	711	476	66.9	539	317	58.8
Newport	W93039	461	301	65.3	460	255	55.4
Newport	W93048	2037	1296	63.6	1550	731	47.2
Newport	W93047	1238	779	62.9	574	247	43.0
Newport	W93050	435	271	62.3	251	152	60.6
Newport	W93043	1196	713	59.6	611	258	42.2
Newport	W93052	933	532	57.0	558	200	35.8
Newport	W93049	1831	1039	56.7	1238	421	34.0



**Figure 9.** Practice level influenza immunisation uptake data for Newport Local Authority based practices (patients aged 65 years and over).

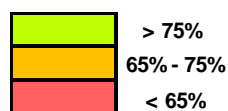


**Figure 10.** Practice level influenza immunisation uptake data for Newport Local Authority based (at risk patients aged under 65 years).

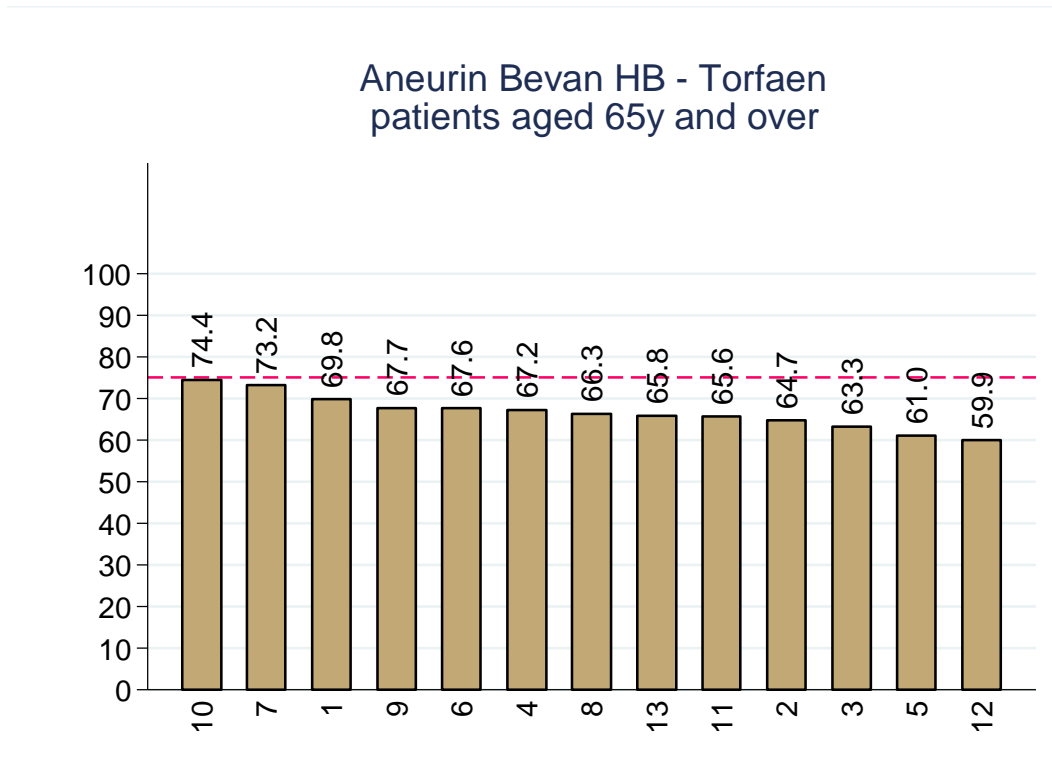


**Table 6.** Practice level influenza immunisation uptake data for Torfaen Local Authority based practices.

Local Authority	Practice code	Patients 65y and over			Patients under 65y at risk		
		(n)	Immunised		(n)	Immunised	
			(n)	(%)		(n)	(%)
Torfaen	10	793	590	74.4	721	375	52.0
Torfaen	7	1155	845	73.2	748	431	57.6
Torfaen	1	721	503	69.8	725	281	38.8
Torfaen	9	1018	689	67.7	377	198	52.5
Torfaen	6	1007	681	67.6	840	417	49.6
Torfaen	4	1086	730	67.2	591	326	55.2
Torfaen	8	2375	1575	66.3	1336	654	49.0
Torfaen	13	1568	1031	65.8	1071	592	55.3
Torfaen	11	1065	699	65.6	501	229	45.7
Torfaen	2	1668	1079	64.7	1011	456	45.1
Torfaen	3	1380	873	63.3	805	330	41.0
Torfaen	5	842	514	61.0	456	168	36.8
Torfaen	12	1864	1117	59.9	1170	527	45.0



**Figure 11.** Practice level influenza immunisation uptake data for Torfaen Local Authority based practices (patients aged 65 years and over).



**Figure 12.** Practice level influenza immunisation uptake data for Torfaen Local Authority based (at risk patients aged under 65 years).

