



GIG
CYMRU
NHS
WALES

Iechyd Cyhoeddus
Cymru
Public Health
Wales

Public Health Wales Vaccine Preventable Disease Programme

Uptake of Childhood immunisation – LHB practice level reports

All Wales summary

July 2009 – June 2010

1. Purpose and Background

This report is intended to assist LHBs and practices in improving uptake of immunisation against childhood disease. Immunisation saves lives. Millions of deaths worldwide are prevented annually through immunisation. The target uptake for all scheduled childhood immunisations at Health Board in Wales is 95%. This is based on the uptake needed to achieve 'herd-immunity', prevent spread in the population and effectively control vaccine preventable infectious diseases.

The data contained in this report is taken from the National Community Child Health Database (NCCHD). The quality of the information in the NCCHD, and therefore in this report, is dependent on the completeness of local Trust Child Health records and return of forms from practices. LHB children for whom practice details are not available are included in the report as 'unknown'.

This report gives an overview of the spreads of practice level uptake rates for routine childhood immunisations with Welsh Local Health Boards, in children reaching their first, second, fifth, 15th and 16th birthdays during the 01/07/2009 – 30/06/2010 period. The 95% uptake target is included on the charts in this report only as a guide.

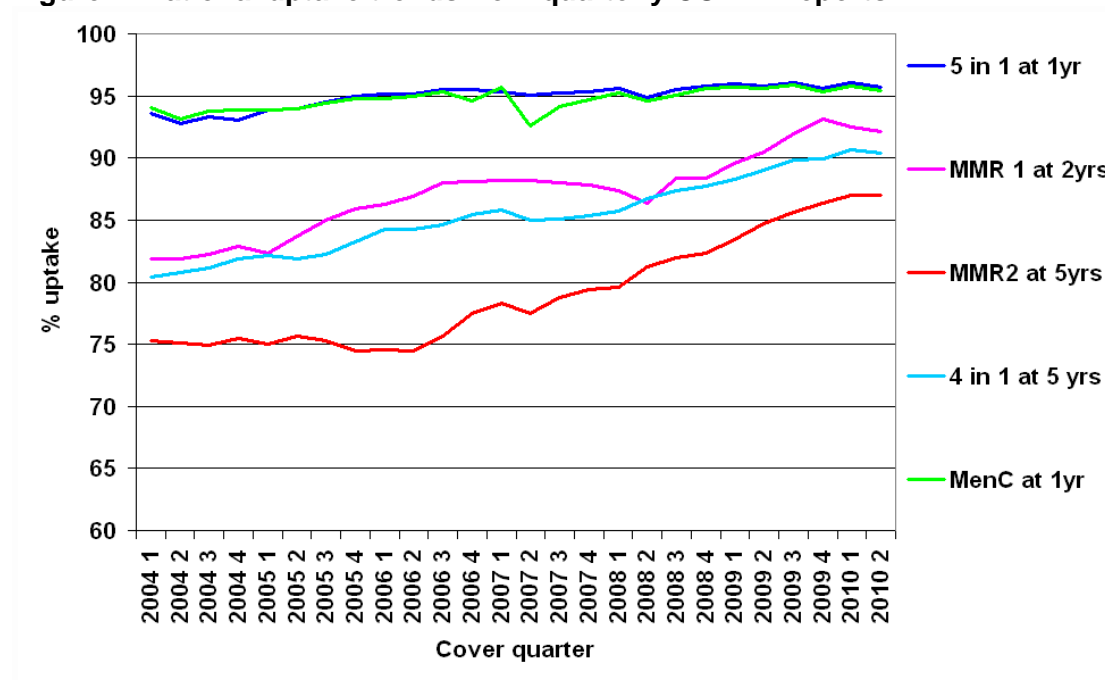
Data presented in this report are based on children in the appropriate birth cohorts and who are recorded on the Child Health Database as being registered with LHB practices. As a result data contained here will not be an exact match to the data contained in the quarterly and annual COVER reports, which is based solely on residence within LA boundaries, not on practice registration.

2. Summary of national immunisation uptake during Jul 2009 – Jun 2010

Table 1. Uptake of routine immunisation in Wales in children reaching the appropriate birthday during July 2009 to June 2010.

Immunisation	Measured at	% uptake
5 in 1 primary (completed three doses)	1yr of age	95.94
Men C (completed two doses)	1yr of age	95.47
PCV (completed two doses)	1yr of age	95.60
PCV (final dose)	2yr of age	91.08
HibMenC (booster dose)	2yr of age	93.67
MMR (one dose)	2yr of age	92.30
MMR (two doses)	5yr of age	86.36
4 in1 (pre-school booster)	5yr of age	90.05
MMR (two doses)	15yr of age	81.71
3 in 1 (teenage booster)	16yr of age	62.38

Figure 1. National uptake trends from quarterly COVER reports **



** Source – NPHS quarterly COVER reports:

Intranet link: <http://howis.wales.nhs.uk/sites3/page.cfm?orgid=474&pid=21302>

Internet link: <http://www.wales.nhs.uk/sites3/page.cfm?orgid=457&pid=27778>

Figure 2. Box and whisker plot showing distributions of practice uptake rates for completed courses of 5 in 1 primary in children reaching their first birthday during 01/07/2009 – 30/06/2010. See page 8 for notes on interpretation.

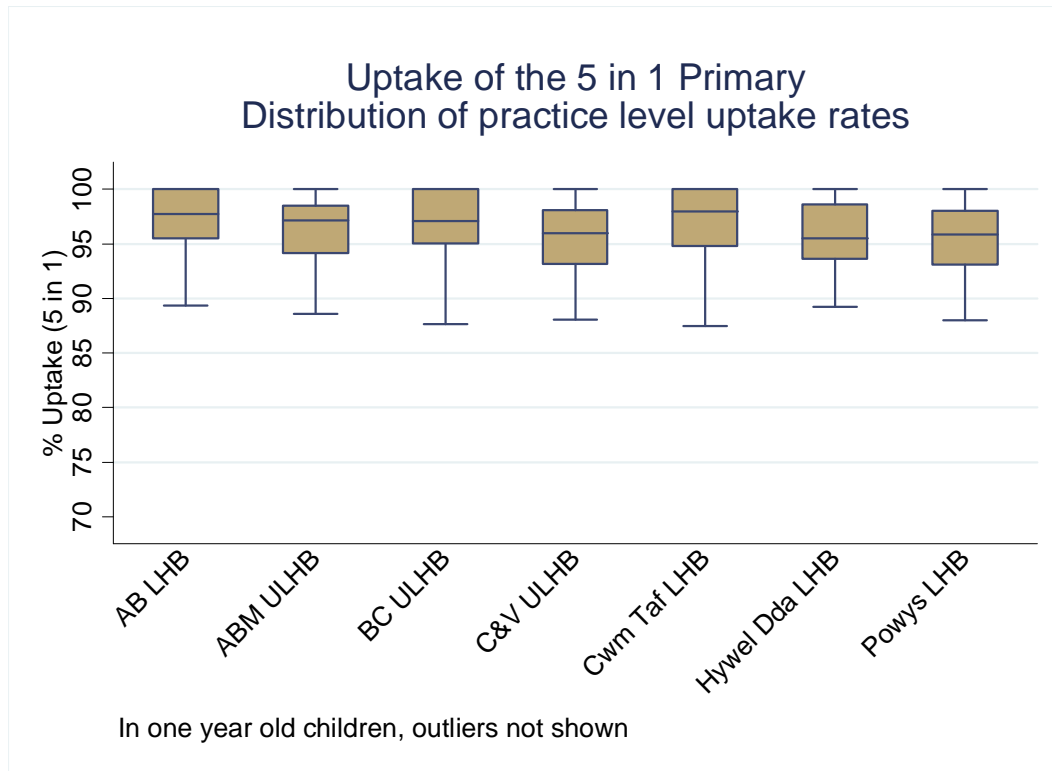


Figure 3. Box and whisker plot showing distributions of practice uptake rates for completed MenC immunisation (two doses) in children reaching their first birthday during 01/07/2009 – 30/06/2010. See page 8 for notes on interpretation.

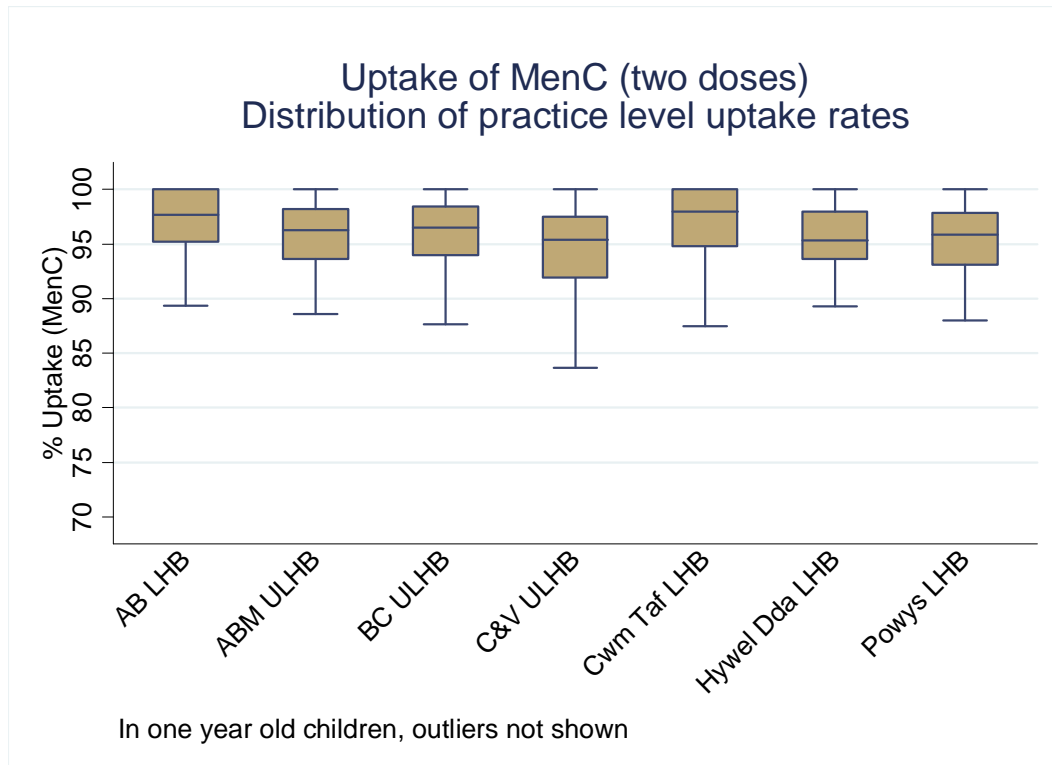


Figure 4. Box and whisker plot showing distributions of practice uptake rates for completed Pneumococcal Conjugate Vaccine (PCV) immunisation (two doses) in children reaching their first birthday during 01/07/2009 – 30/06/2010. See page 8 for notes on interpretation.

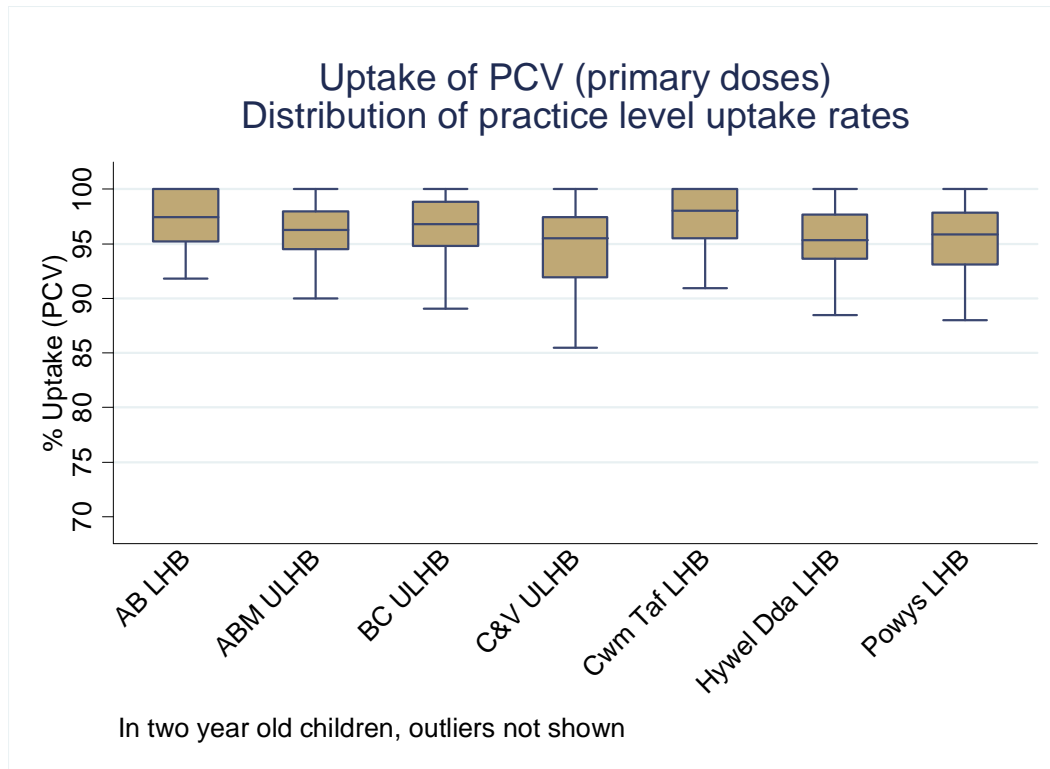


Figure 5. Box and whisker plot showing distributions of practice uptake rates for third (final) Pneumococcal Conjugate Vaccine (PCV) immunisation in children reaching their second birthday during 01/07/2009 – 30/06/2010. See page 8 for notes on interpretation.

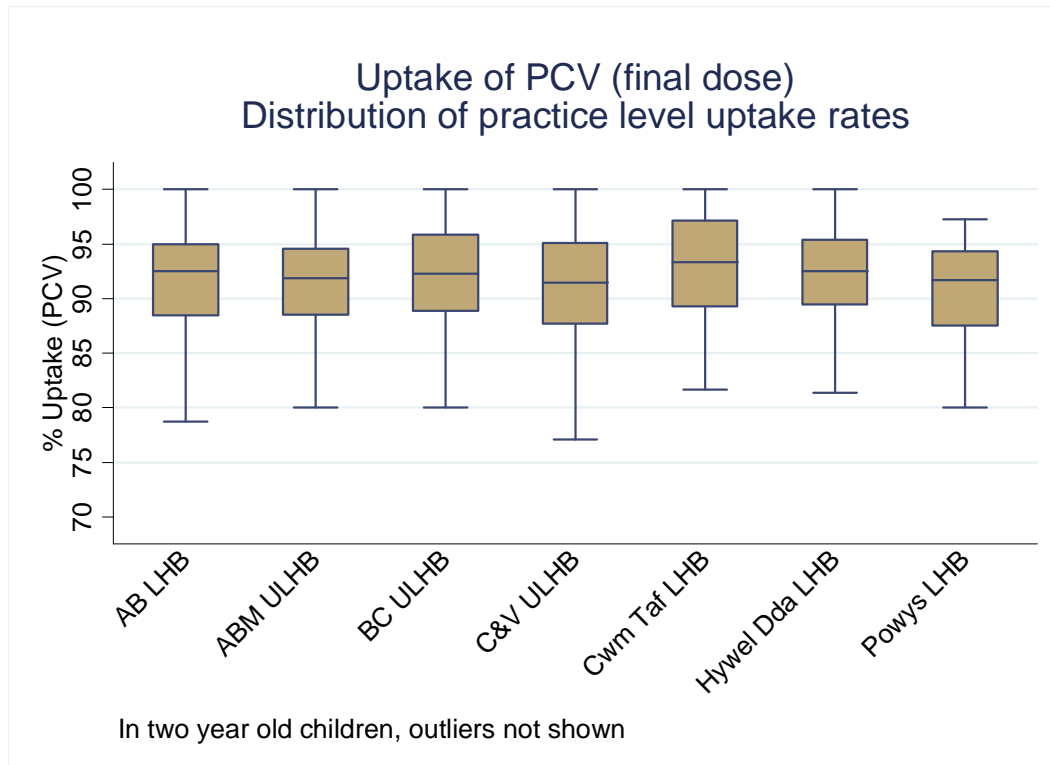


Figure 6. Box and whisker plot showing distributions of practice uptake rates for the HibMenC booster immunisation in children reaching their second birthday during 01/07/2009 – 30/06/2010. See page 8 for notes on interpretation.

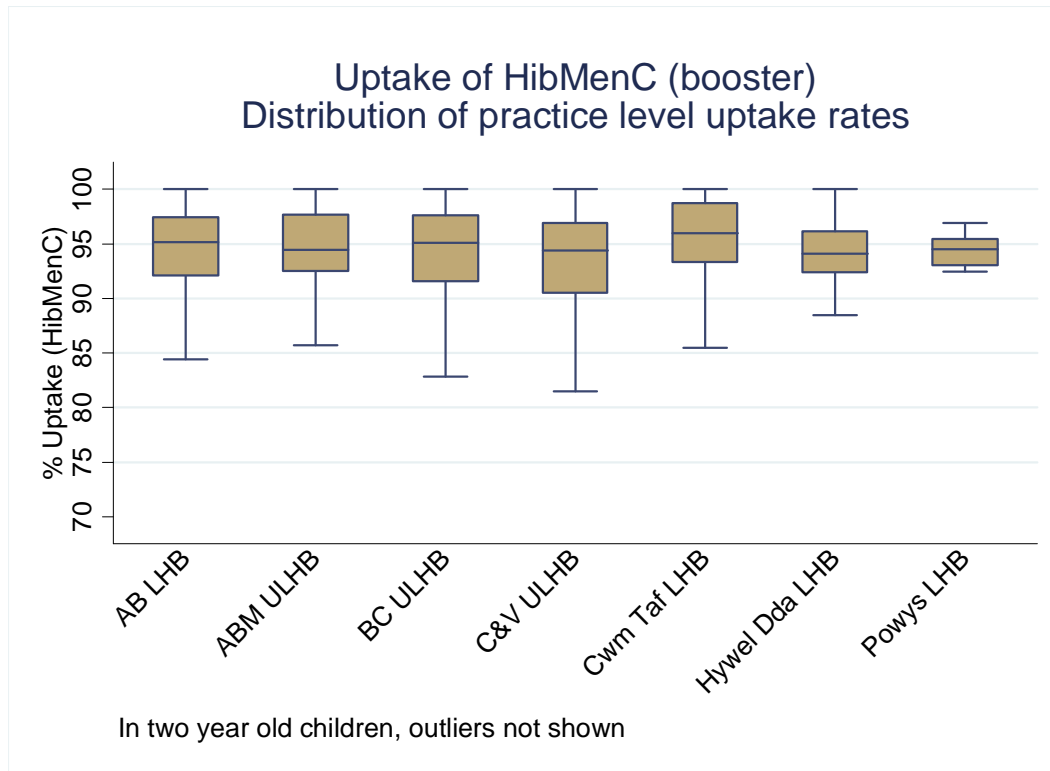


Figure 7. Box and whisker plot showing distributions of practice uptake rates for one dose of MMR immunisation in children reaching their second birthday during 01/07/2009 – 30/06/2010. See page 8 for notes on interpretation.

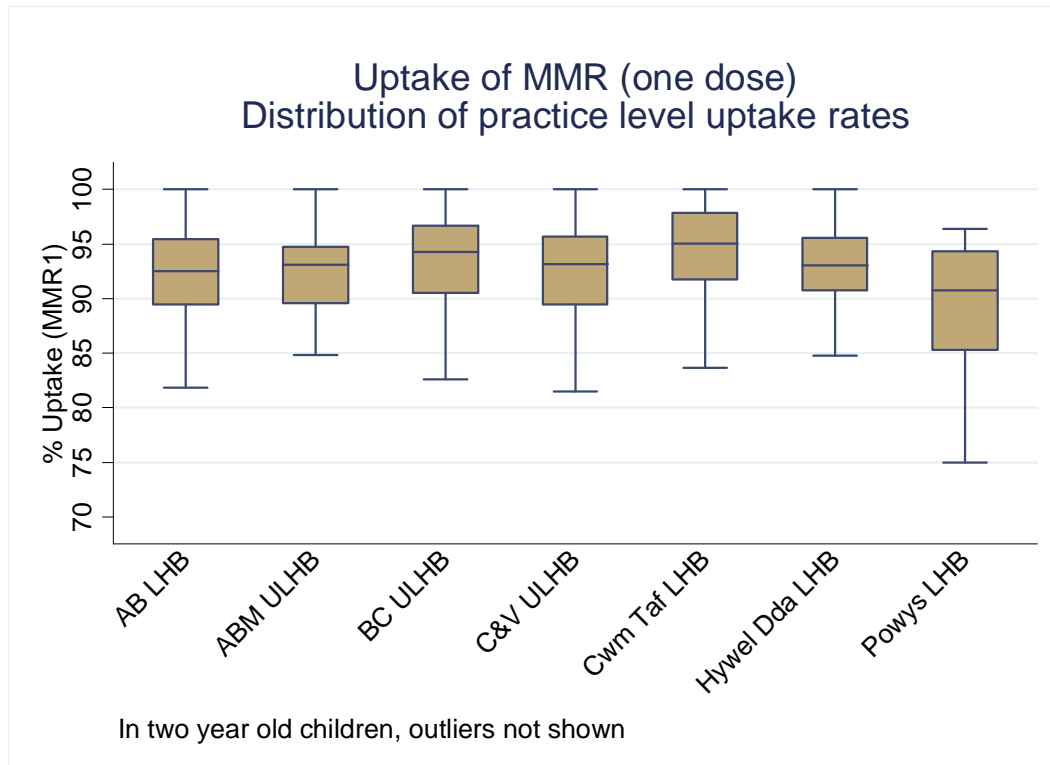


Figure 8. Box and whisker plot showing distributions of practice uptake rates for two doses of MMR immunisation in children reaching their fifth birthday during 01/07/2009 – 30/06/2010. See page 8 for notes on interpretation.

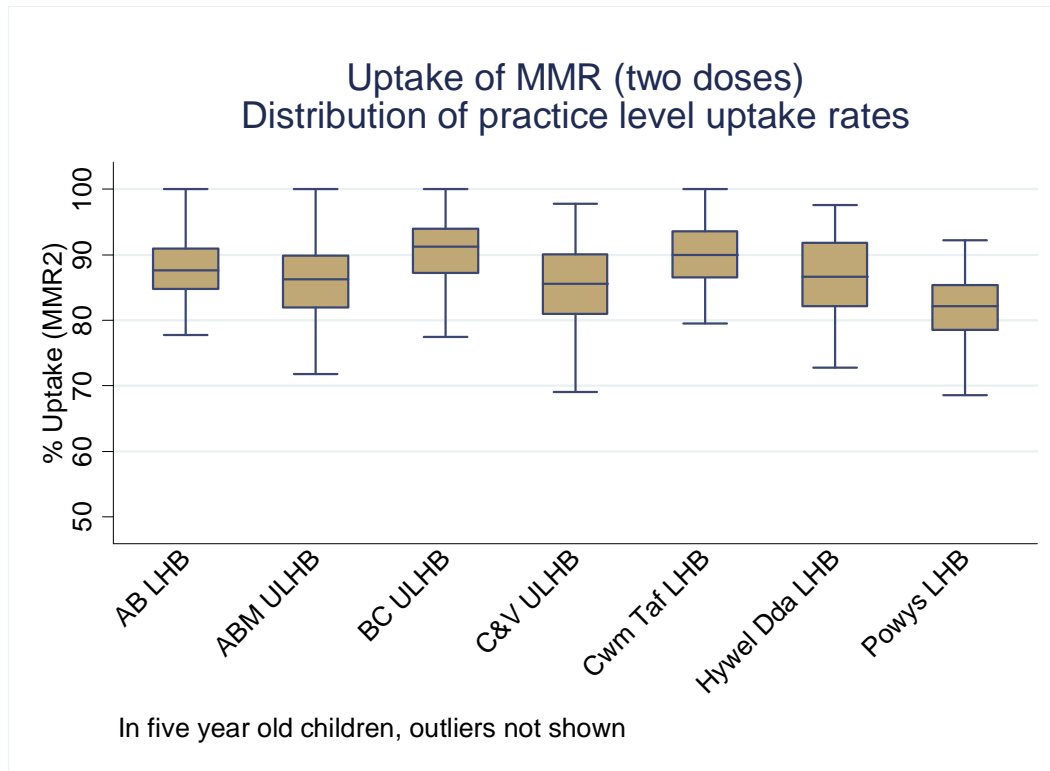


Figure 9. Box and whisker plot showing distributions of practice uptake rates for the 4 in 1 pre-school booster immunisation in children reaching their fifth birthday during 01/07/2009 – 30/06/2010. See page 8 for notes on interpretation.

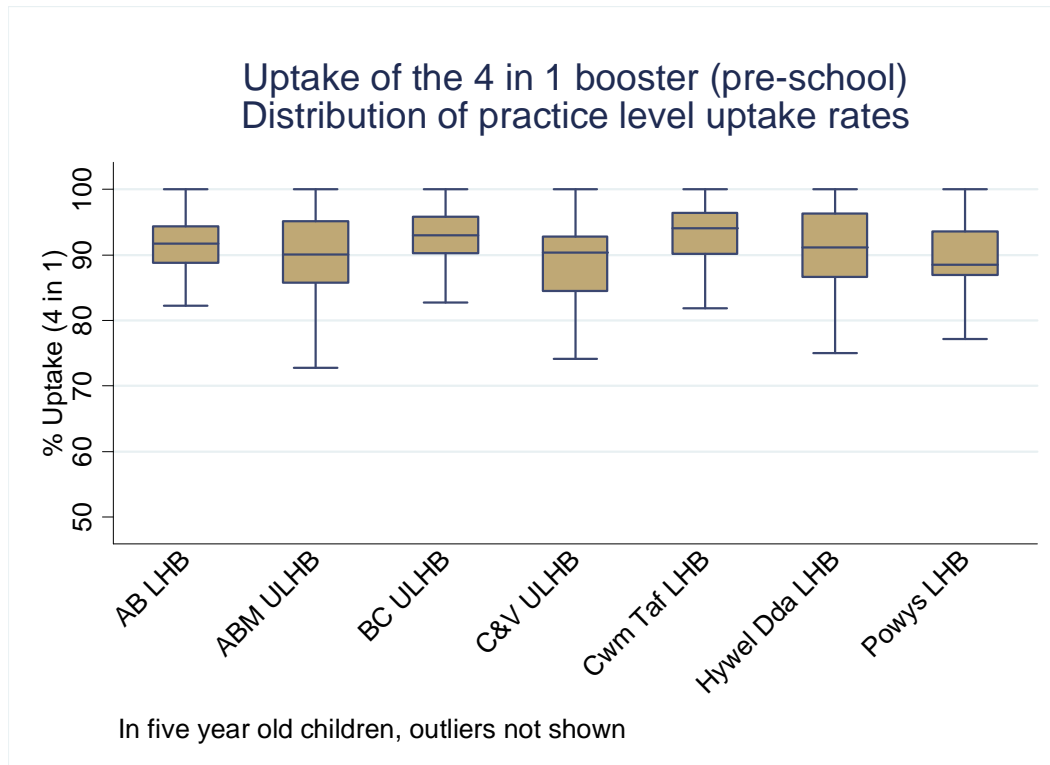


Figure 10. Box and whisker plot showing distributions of practice uptake rates for one dose of MMR immunisation in children reaching their fifteenth birthday during 01/07/2009 – 30/06/2010. See page 8 for notes on interpretation.

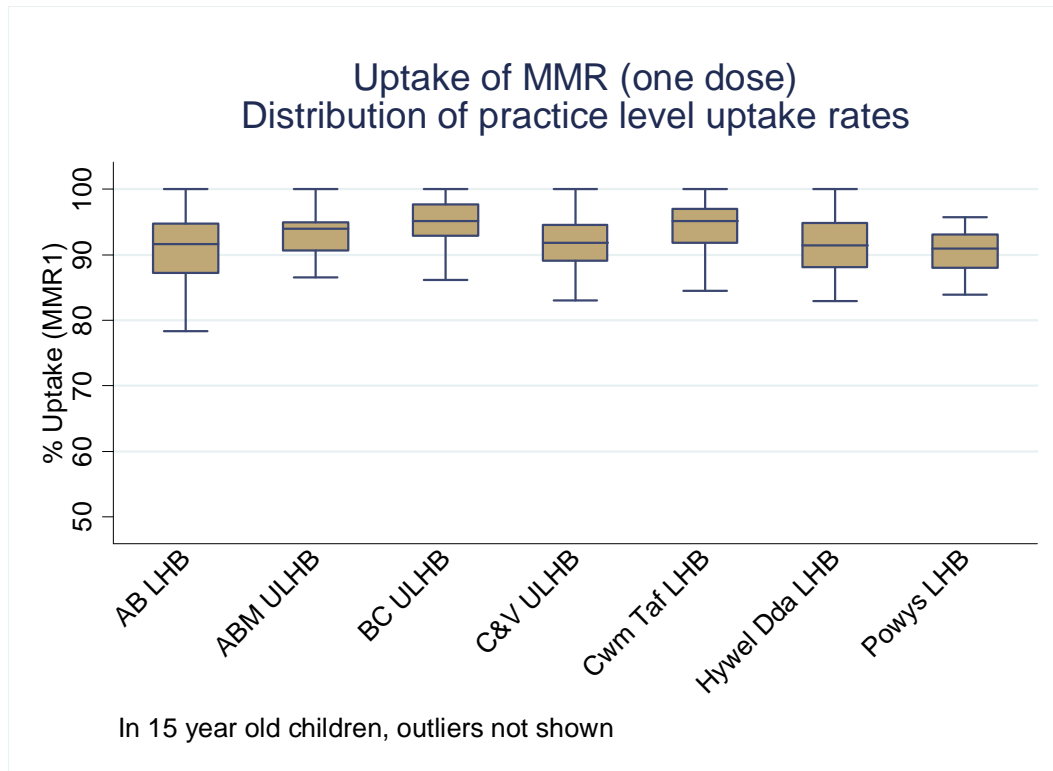


Figure 11. Box and whisker plot showing distributions of practice uptake rates for two doses of MMR immunisation in children reaching their fifteenth birthday during 01/07/2009 – 30/06/2010. See page 8 for notes on interpretation.

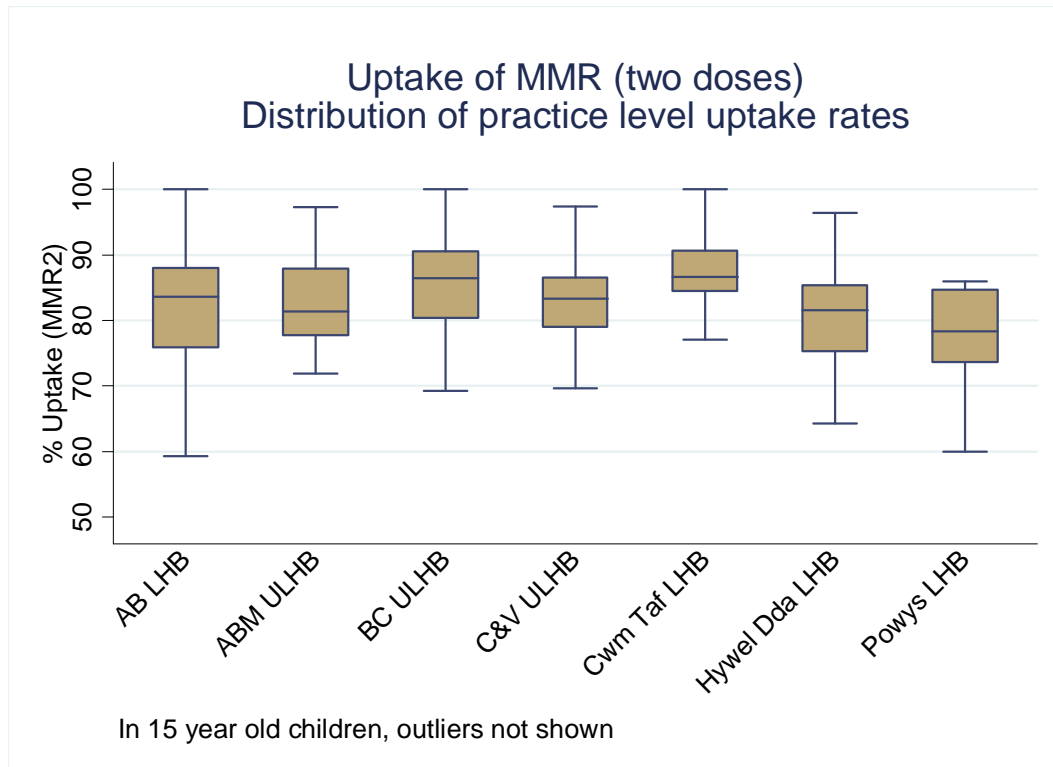


Figure 12. Box and whisker plot showing distributions of practice uptake rates for the 3 in 1 teenage booster immunisation in children reaching their sixteenth birthday during 01/07/2009 – 30/06/2010. See page 8 for notes on interpretation.

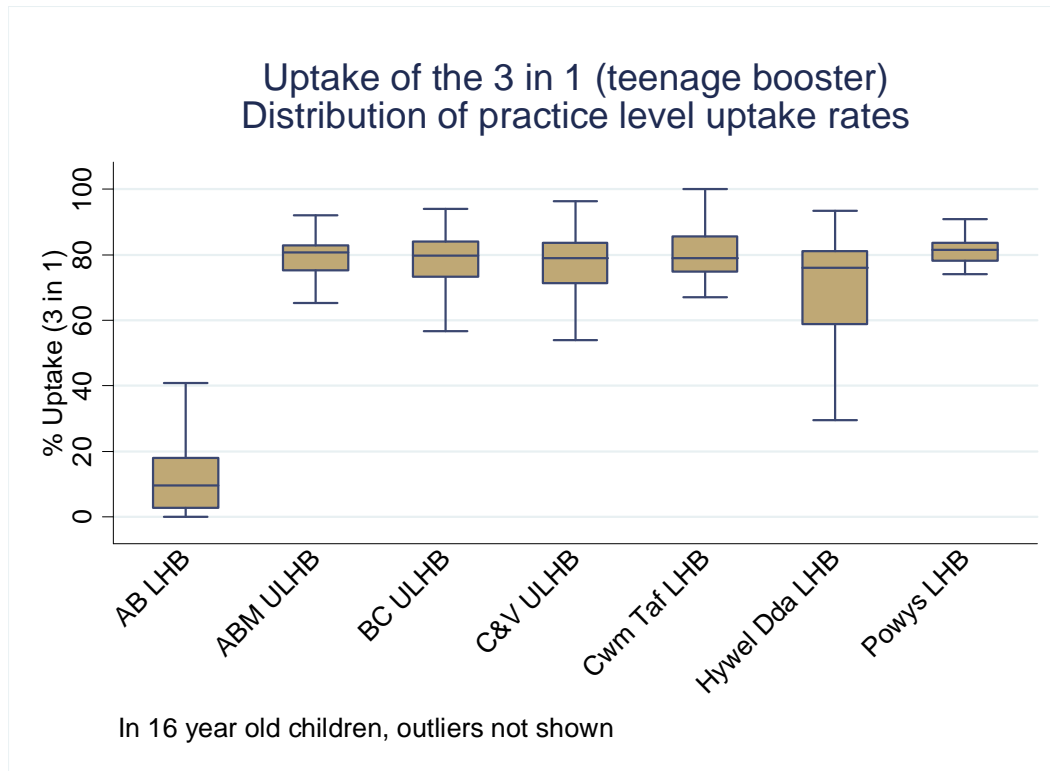
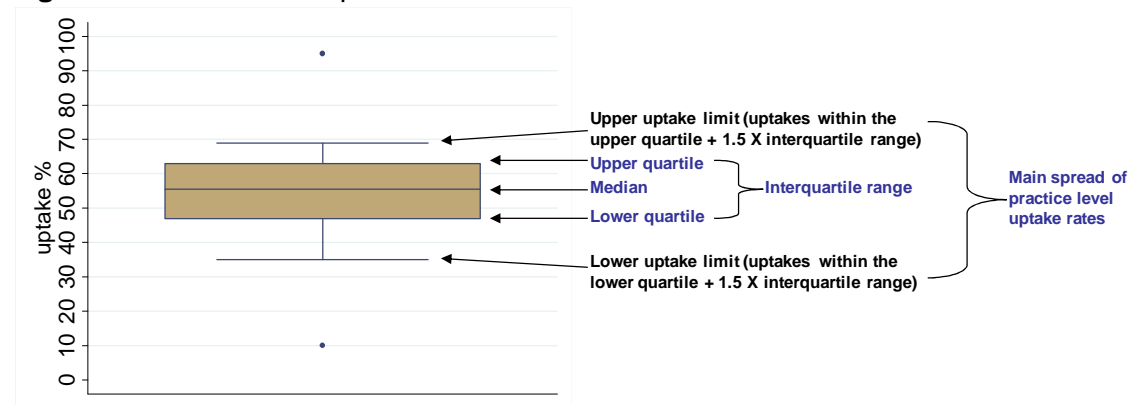


Figure 13. Notes on interpretation.



Figures 1 to 12 summarise the range of uptake rates within practices based in LHB Local Authority areas. Figure 13 provides an illustration as to how the box and whisker plots are constructed.

The box and whisker plots above show the spread of uptake rates of practices within LHB Local Authority (LA) areas. The line inside the shaded box represents the median practice uptake rate (half of the LA practices have an uptake higher than the median value and half have an uptake lower than the median value). The shaded box represents the spread in uptake rates of the central 50% of practices, this is called the interquartile range. The whiskers extending above and below the shaded box represent the spread in practice uptake rates for the majority of practices within the LA. Any practices with uptake rates that are very different from the majority of practices within the LA are termed ‘outliers’ and appear as dots outside the whiskers.