



**GIG**  
CYMRU  
**NHS**  
WALES

Iechyd Cyhoeddus  
Cymru  
Public Health  
Wales

# **Public Health Wales Vaccine Preventable Disease Programme**

## **Uptake of Seasonal Influenza Vaccination – HB specific reports**

**Aneurin Bevan Health Board**

**2011/2012**

## 1. Background

The aim of the Welsh Government seasonal influenza immunisation campaign policy is to minimise flu related morbidity, mortality, and hospital admissions.

In Wales in 2011/12, free seasonal influenza immunisation was offered to all people aged 65 years and over, and people between 6 months and 65 years in clinical risk groups (chronic respiratory disease, chronic heart disease, chronic renal disease, chronic liver disease, chronic neurological conditions, diabetes mellitus, and immunosuppression), residents of long-stay care homes, and those who were a main carer for an elderly or disabled person whose welfare may be at risk if the carer fell ill. During the 2011/12 season, free seasonal influenza immunisation was also offered to all pregnant women.

For 2011/12 the Welsh Government target immunisation uptake rate was 75% for people aged 65 years and over, and those aged under 65 years in clinical risk groups.

This report has been prepared using influenza immunisation data collected directly from practices using the Audit+ Data Quality System. The report provides a description of the spread in uptake of influenza immunisation at General Practice level and allows HB Immunisation Coordinators, Nursing and Medical leads, Directors of Public Health, and Public Health Wales to identify possible problems with return of immunisation data or low uptake of influenza immunisation.

This report reflects data on immunisations given and recorded on GP systems up to 12<sup>th</sup> April 2012, collated via Audit+. Data was received from 97.8% of practices in Aneurin Bevan HB.

## 2. Summary of uptake in Aneurin Bevan HB

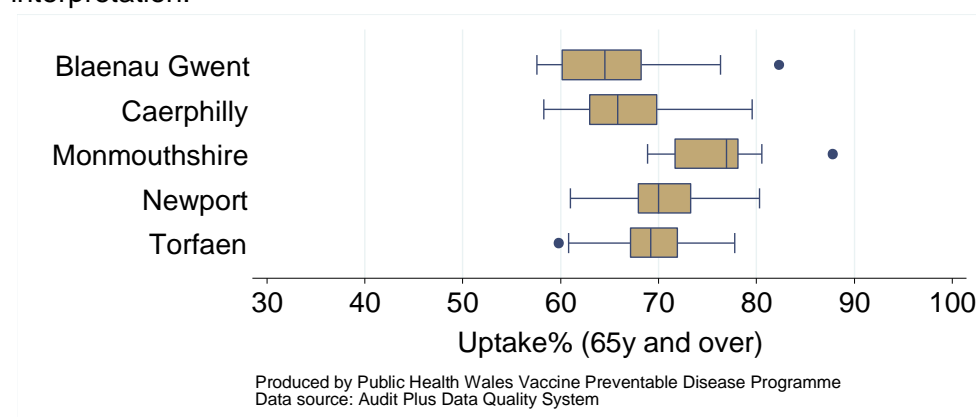
**Table 1.** Summary data for Aneurin Bevan Local Authorities (patients aged 65y and over and patients aged under 65y at risk).

	Patients aged 65y and over					
	Practices achieving 75%	Practices not submitting	Total practices	Lowest practice uptake (%)	Highest practice uptake (%)	Overall LA uptake (%)
Blaenau Gwent	2	0	15	57.6	82.3	64.4
Caerphilly	3	2	28	58.3	79.6	66.2
Monmouthshire	8	0	14	68.9	87.8	75.5
Newport	4	0	21	61.0	80.3	70.9
Torfaen	1	0	13	59.8	77.8	69.1
<b>Aneurin Bevan total</b>	<b>14</b>	<b>4</b>	<b>91</b>	<b>57.6</b>	<b>87.8</b>	<b>69.4</b>

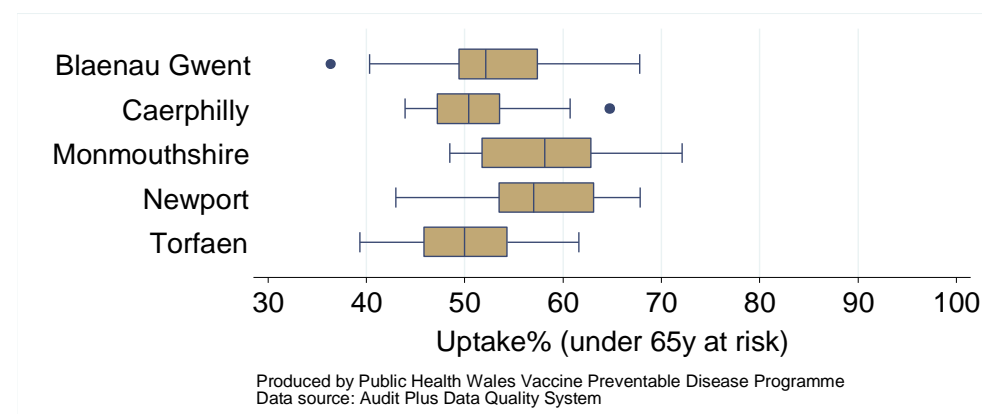
  

	Patients aged under 65y at risk					
	Practices achieving 75%	Practices not submitting	Total practices	Lowest practice uptake (%)	Highest practice uptake (%)	Overall LA uptake (%)
Blaenau Gwent	0	0	15	36.4	67.8	50.1
Caerphilly	0	2	28	43.9	64.8	50.4
Monmouthshire	0	0	14	48.5	72.1	56.5
Newport	0	0	21	43.0	67.8	55.9
Torfaen	0	0	13	39.4	61.6	50.2
<b>Aneurin Bevan total</b>	<b>0</b>	<b>2</b>	<b>91</b>	<b>36.4</b>	<b>72.1</b>	<b>52.6</b>

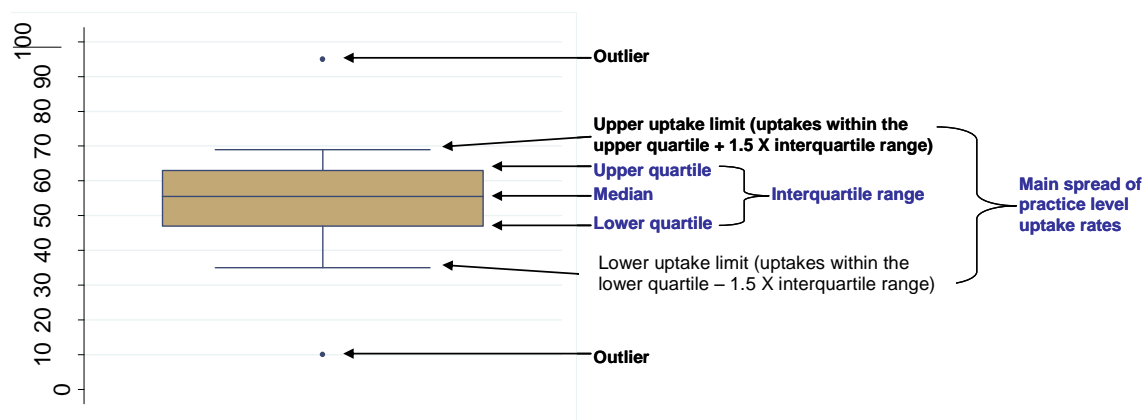
**Figure 1.** Box and whisker plot showing distributions of practice seasonal influenza immunisation uptake rates (patients aged 65y and over). See page 4 for notes on interpretation.



**Figure 2.** Box and whisker plot showing distributions of practice seasonal influenza immunisation uptake rates (patients aged under 65y at risk). See page 4 for notes on interpretation.



**Figure 3.** Notes on interpretation - Diagram of a box and whisker plot.



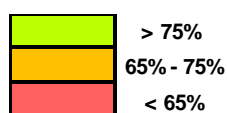
Figures 1 and 2 summarise the range of uptake rates within practices based in LHB Local Authority areas. Figure 3 provides an illustration as to how the box and whisker plots are constructed.

The box and whisker plots above show the spread of uptake rates of practices within HB Local Authority (LA) areas. The line inside the shaded box represents the median practice uptake rate (half of the LA practices have an uptake higher than the median value and half have an uptake lower than the median value). The shaded box represents the spread in uptake rates of the central 50% of practices, this is called the interquartile range. The whiskers extending above and below the shaded box represent the spread in practice uptake rates for the majority of practices within the LA. Any practices with uptake rates that are very different from the majority of practices within the LA are termed 'outliers' and appear as dots outside the whiskers.

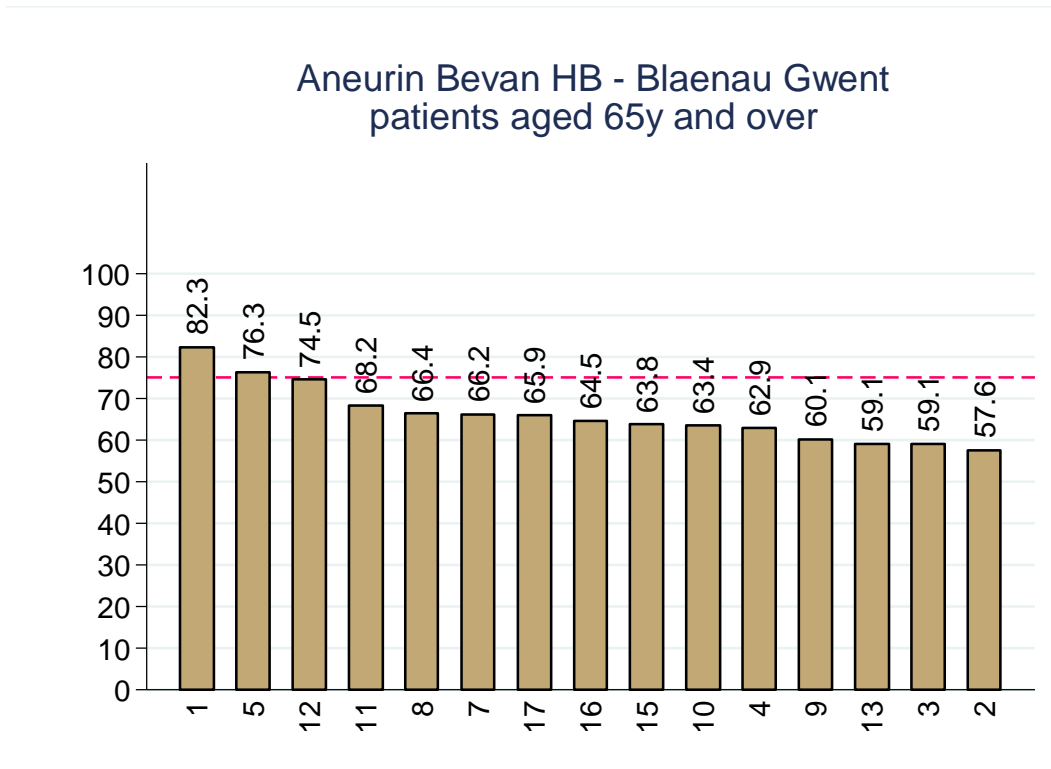
### 3. Practice level data

**Table 2.** Practice level influenza immunisation uptake data for Blaenau Gwent Local Authority based practices.

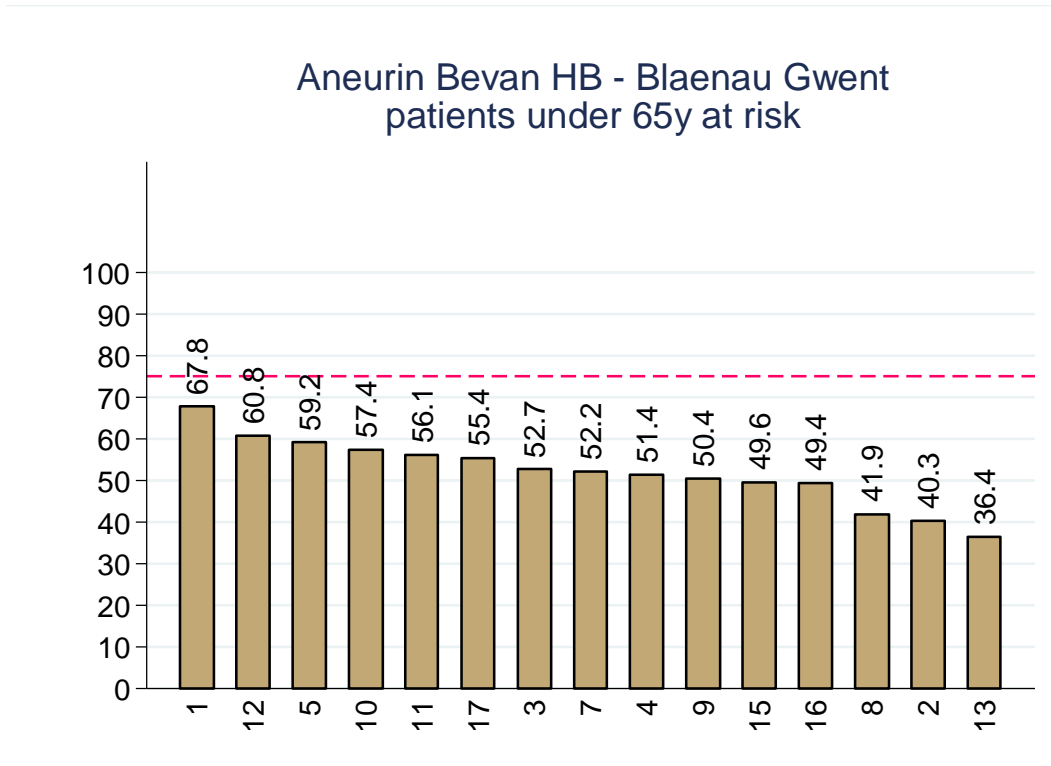
Local Authority	Practice code	Patients 65y and over			Patients under 65y at risk		
		(n)	Immunised		(n)	Immunised	
			(n)	(%)		(n)	(%)
Blaenau Gwent	1	611	503	82.3	289	196	67.8
Blaenau Gwent	5	545	416	76.3	490	290	59.2
Blaenau Gwent	12	365	272	74.5	237	144	60.8
Blaenau Gwent	11	548	374	68.2	255	143	56.1
Blaenau Gwent	8	536	356	66.4	437	183	41.9
Blaenau Gwent	7	1485	983	66.2	1093	570	52.2
Blaenau Gwent	17	648	427	65.9	442	245	55.4
Blaenau Gwent	16	781	504	64.5	435	215	49.4
Blaenau Gwent	15	1548	988	63.8	934	463	49.6
Blaenau Gwent	10	517	328	63.4	202	116	57.4
Blaenau Gwent	4	1110	698	62.9	803	413	51.4
Blaenau Gwent	9	1340	806	60.1	762	384	50.4
Blaenau Gwent	13	1189	703	59.1	687	250	36.4
Blaenau Gwent	3	988	584	59.1	495	261	52.7
Blaenau Gwent	2	1174	676	57.6	841	339	40.3



**Figure 3.** Practice level influenza immunisation uptake data for Blaenau Gwent Local Authority based practices (patients aged 65 years and over).

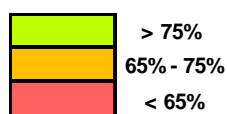


**Figure 4.** Practice level influenza immunisation uptake data for Blaenau Gwent Local Authority based practices (at risk patients aged under 65 years).

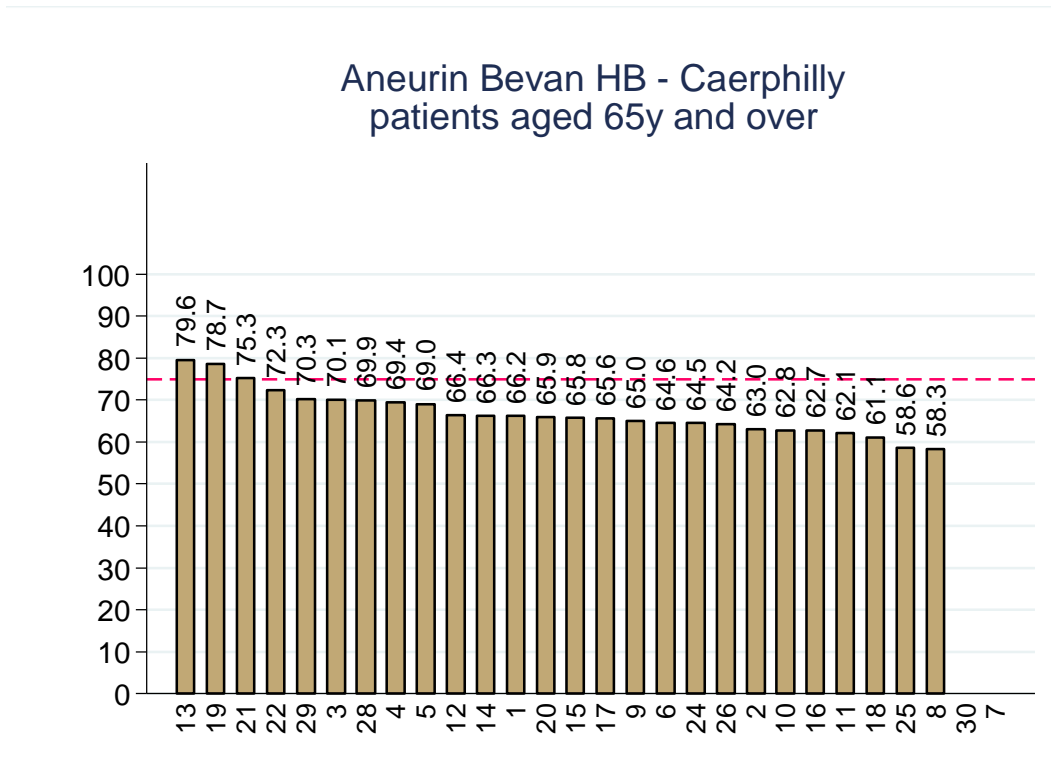


**Table 3.** Practice level influenza immunisation uptake data for Caerphilly Local Authority based practices.

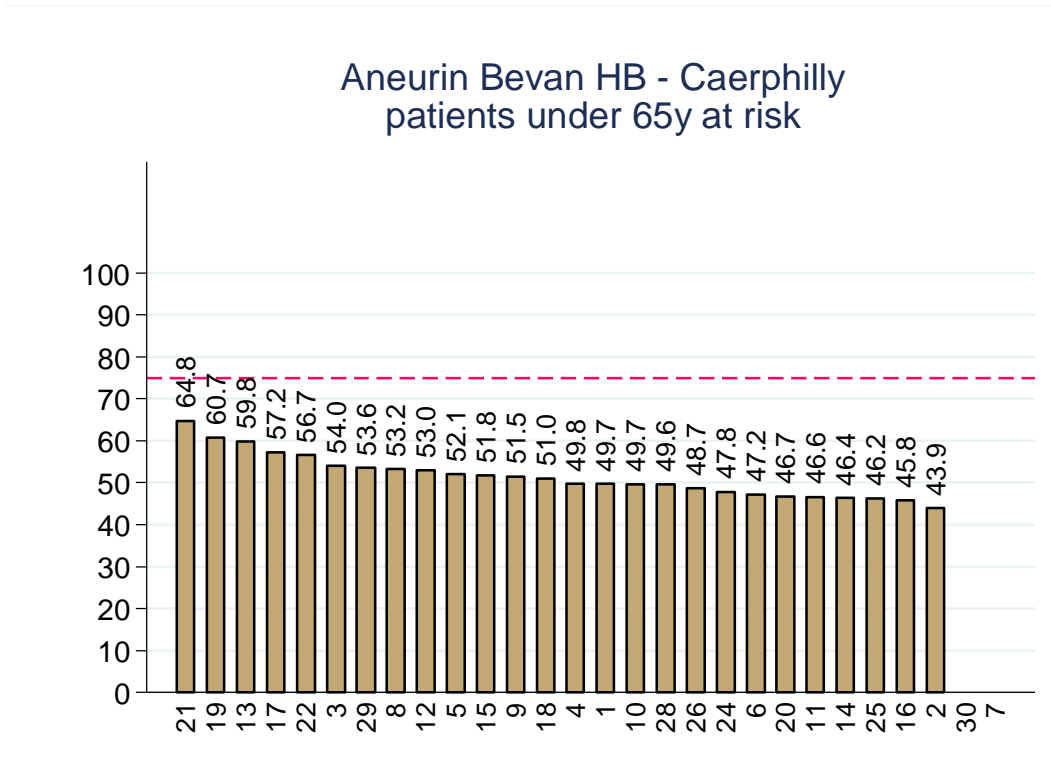
Local Authority	Practice code	Patients 65y and over			Patients under 65y at risk		
		(n)	Immunised		(n)	Immunised	
			(n)	(%)		(n)	(%)
Caerphilly	13	568	452	79.6	575	344	59.8
Caerphilly	19	464	365	78.7	280	170	60.7
Caerphilly	21	360	271	75.3	386	250	64.8
Caerphilly	22	882	638	72.3	741	420	56.7
Caerphilly	29	407	286	70.3	194	104	53.6
Caerphilly	3	378	265	70.1	252	136	54.0
Caerphilly	28	1935	1352	69.9	939	466	49.6
Caerphilly	4	2569	1783	69.4	1327	661	49.8
Caerphilly	5	927	640	69.0	526	274	52.1
Caerphilly	12	327	217	66.4	400	212	53.0
Caerphilly	14	1040	689	66.3	801	372	46.4
Caerphilly	1	849	562	66.2	493	245	49.7
Caerphilly	20	1216	801	65.9	910	425	46.7
Caerphilly	15	1179	776	65.8	954	494	51.8
Caerphilly	17	1152	756	65.6	551	315	57.2
Caerphilly	9	1861	1209	65.0	1162	598	51.5
Caerphilly	6	1467	947	64.6	1169	552	47.2
Caerphilly	24	2255	1454	64.5	1484	710	47.8
Caerphilly	26	1548	994	64.2	1005	489	48.7
Caerphilly	2	543	342	63.0	346	152	43.9
Caerphilly	10	607	381	62.8	463	230	49.7
Caerphilly	16	1144	717	62.7	799	366	45.8
Caerphilly	11	1117	694	62.1	710	331	46.6
Caerphilly	18	1061	648	61.1	565	288	51.0
Caerphilly	25	1161	680	58.6	712	329	46.2
Caerphilly	8	508	296	58.3	357	190	53.2
Caerphilly	7	Data not available					
Caerphilly	30	Data not available					



**Figure 5.** Practice level influenza immunisation uptake data for Caerphilly Local Authority based practices (patients aged 65 years and over).



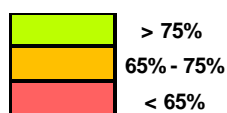
**Figure 6.** Practice level influenza immunisation uptake data for Caerphilly Local Authority based (at risk patients aged under 65 years).



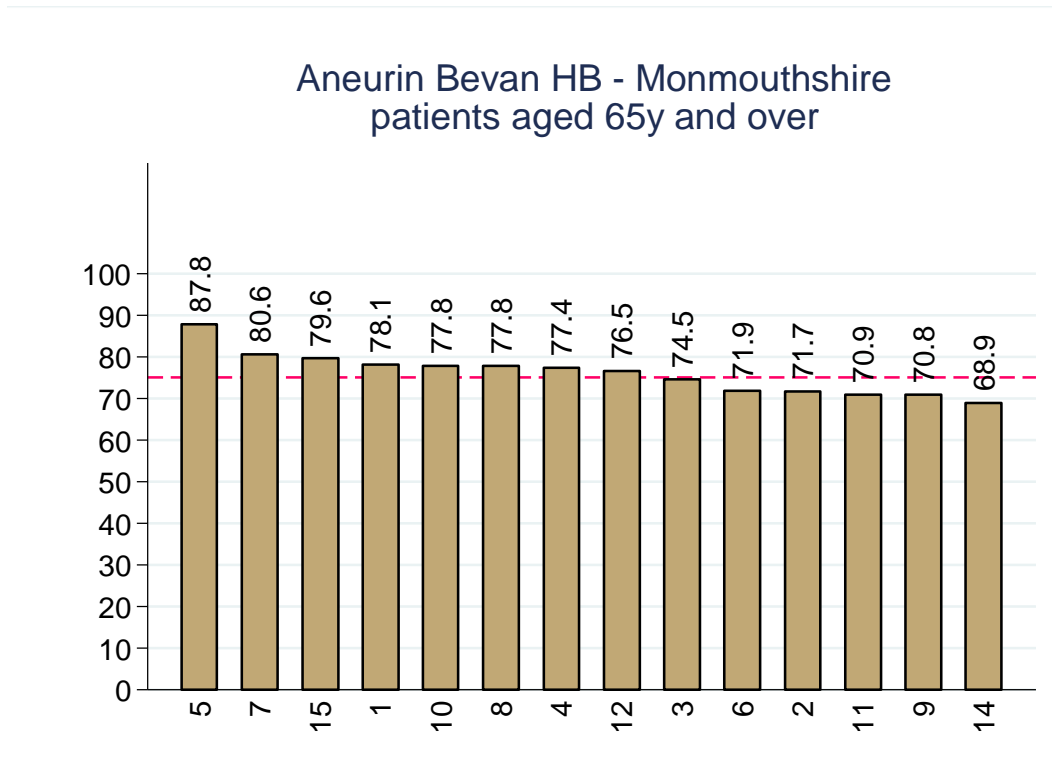


**Table 4.** Practice level influenza immunisation uptake data for Monmouthshire Local Authority based practices.

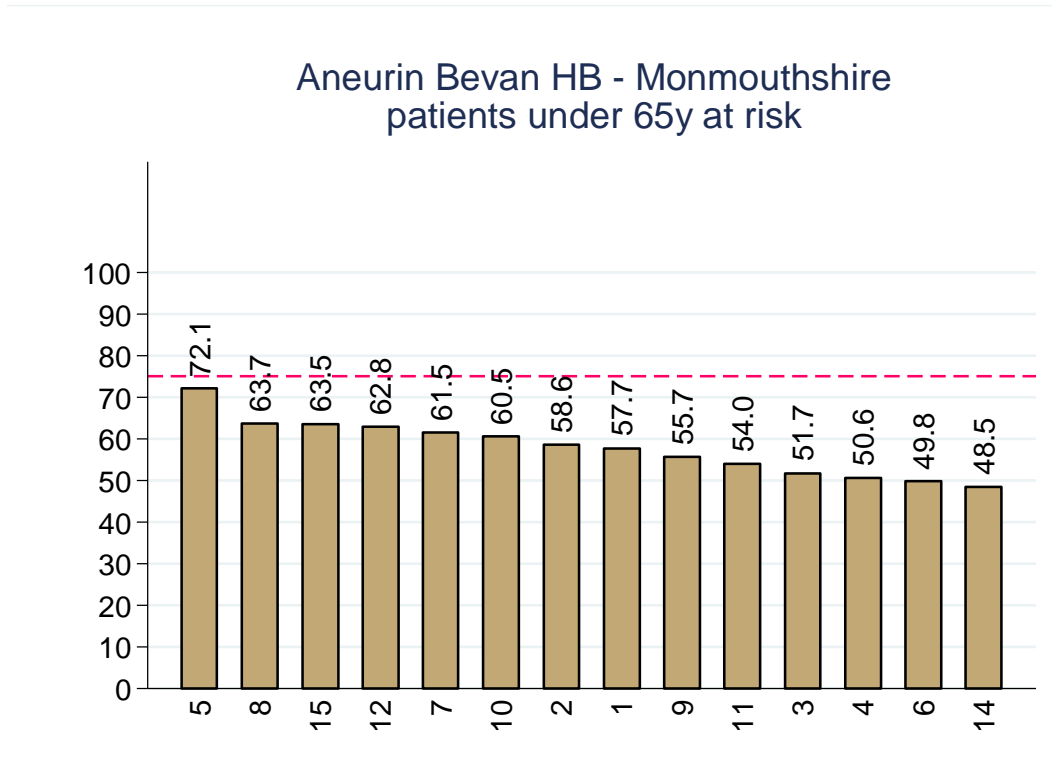
Local Authority	Practice code	Patients 65y and over			Patients under 65y at risk		
		(n)	Immunised		(n)	Immunised	
			(n)	(%)		(n)	(%)
Monmouthshire	5	377	331	87.8	190	137	72.1
Monmouthshire	7	2325	1873	80.6	1122	690	61.5
Monmouthshire	15	1320	1051	79.6	650	413	63.5
Monmouthshire	1	3670	2866	78.1	1985	1146	57.7
Monmouthshire	10	504	392	77.8	190	115	60.5
Monmouthshire	8	553	430	77.8	212	135	63.7
Monmouthshire	4	1885	1459	77.4	786	398	50.6
Monmouthshire	12	1081	827	76.5	444	279	62.8
Monmouthshire	3	522	389	74.5	315	163	51.7
Monmouthshire	6	2390	1718	71.9	945	471	49.8
Monmouthshire	2	544	390	71.7	280	164	58.6
Monmouthshire	11	1018	722	70.9	376	203	54.0
Monmouthshire	9	1682	1191	70.8	812	452	55.7
Monmouthshire	14	2126	1464	68.9	918	445	48.5



**Figure 7.** Practice level influenza immunisation uptake data for Monmouthshire Local Authority based practices (patients aged 65 years and over).

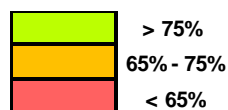


**Figure 8.** Practice level influenza immunisation uptake data for Monmouthshire Local Authority based (at risk patients aged under 65 years).

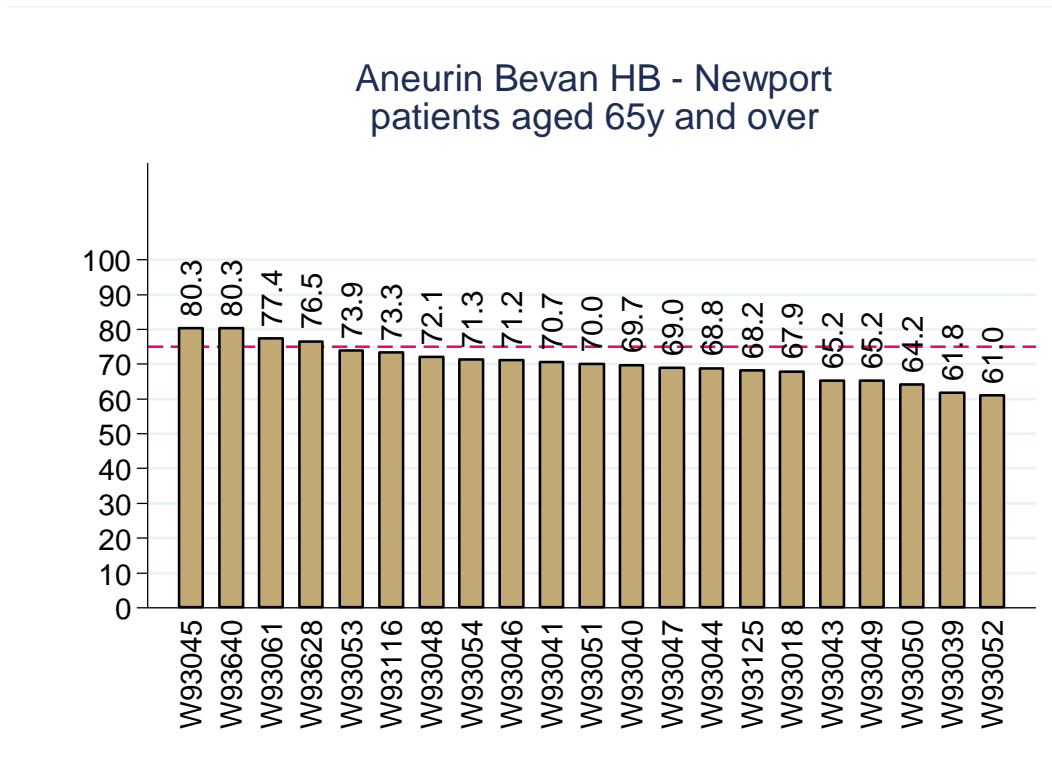


**Table 5.** Practice level influenza immunisation uptake data for Newport Local Authority based practices.

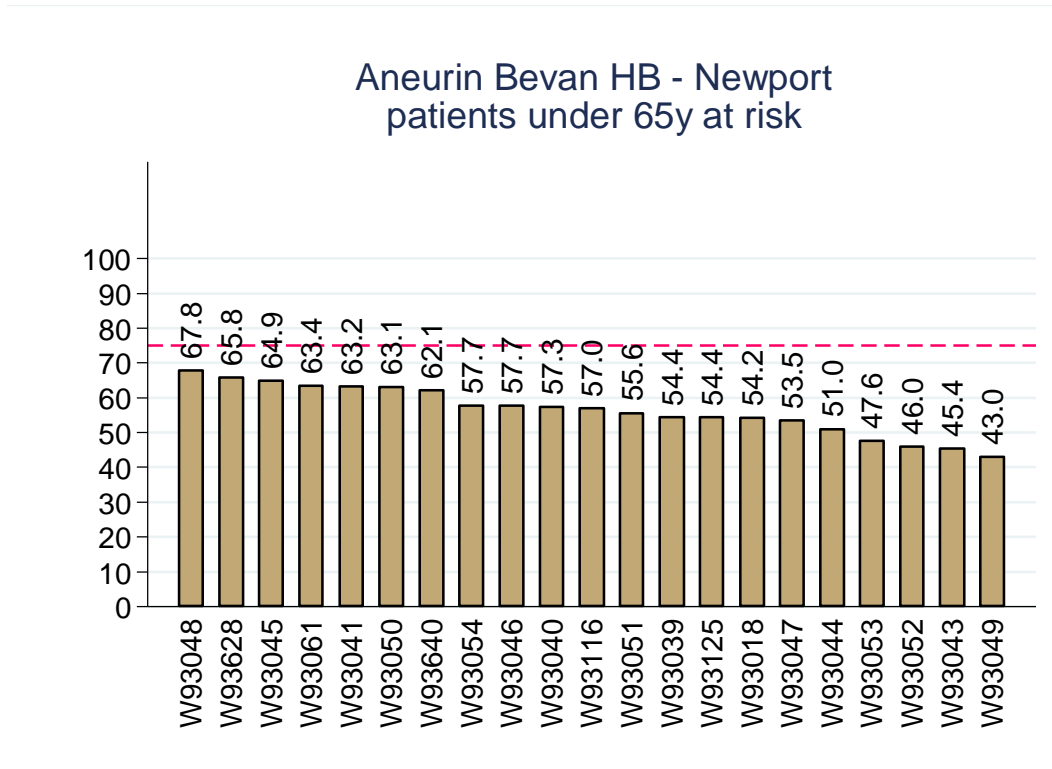
Local Authority	Practice code	Patients 65y and over			Patients under 65y at risk		
		(n)	Immunised		(n)	Immunised	
			(n)	(%)		(n)	(%)
Newport	W93045	1535	1233	80.3	746	484	64.9
Newport	W93640	594	477	80.3	435	270	62.1
Newport	W93061	2072	1603	77.4	891	565	63.4
Newport	W93628	469	359	76.5	363	239	65.8
Newport	W93053	2121	1568	73.9	1423	677	47.6
Newport	W93116	450	330	73.3	349	199	57.0
Newport	W93048	2085	1504	72.1	1595	1082	67.8
Newport	W93054	2267	1616	71.3	1079	623	57.7
Newport	W93046	716	510	71.2	473	273	57.7
Newport	W93041	710	502	70.7	571	361	63.2
Newport	W93051	1293	905	70.0	1000	556	55.6
Newport	W93040	866	604	69.7	623	357	57.3
Newport	W93047	1266	874	69.0	628	336	53.5
Newport	W93044	1017	700	68.8	733	374	51.0
Newport	W93125	519	354	68.2	342	186	54.4
Newport	W93018	1708	1160	67.9	816	442	54.2
Newport	W93043	1223	798	65.2	606	275	45.4
Newport	W93049	1842	1201	65.2	1261	542	43.0
Newport	W93050	430	276	64.2	236	149	63.1
Newport	W93039	445	275	61.8	507	276	54.4
Newport	W93052	939	573	61.0	559	257	46.0



**Figure 9.** Practice level influenza immunisation uptake data for Newport Local Authority based practices (patients aged 65 years and over).

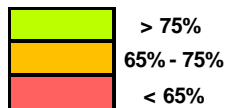


**Figure 10.** Practice level influenza immunisation uptake data for Newport Local Authority based (at risk patients aged under 65 years).

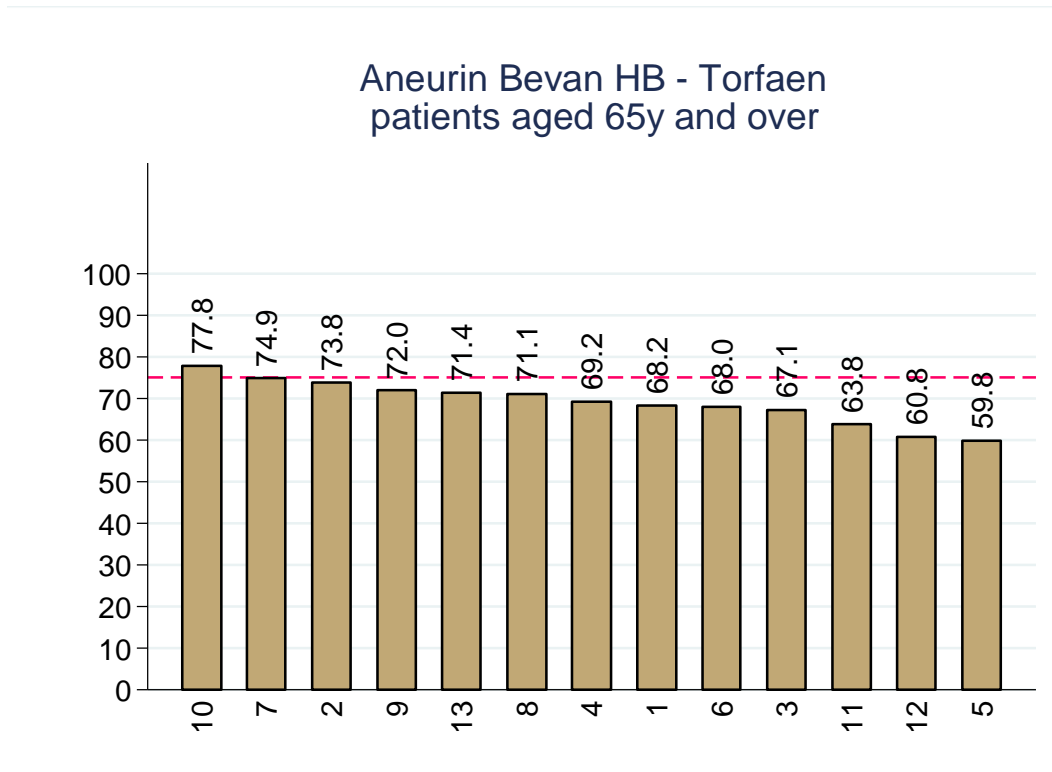


**Table 6.** Practice level influenza immunisation uptake data for Torfaen Local Authority based practices.

Local Authority	Practice code	Patients 65y and over			Patients under 65y at risk		
		(n)	Immunised		(n)	Immunised	
			(n)	(%)		(n)	(%)
Torfaen	10	833	648	77.8	735	442	60.1
Torfaen	7	1197	896	74.9	743	442	59.5
Torfaen	2	1684	1243	73.8	1000	496	49.6
Torfaen	9	1031	742	72.0	417	257	61.6
Torfaen	13	1624	1159	71.4	1103	585	53.0
Torfaen	8	2489	1770	71.1	1337	694	51.9
Torfaen	4	1100	761	69.2	690	375	54.3
Torfaen	1	768	524	68.2	738	299	40.5
Torfaen	6	1008	685	68.0	790	395	50.0
Torfaen	3	1424	956	67.1	842	386	45.8
Torfaen	11	1088	694	63.8	562	223	39.7
Torfaen	12	1965	1195	60.8	1221	570	46.7
Torfaen	5	851	509	59.8	465	183	39.4



**Figure 11.** Practice level influenza immunisation uptake data for Torfaen Local Authority based practices (patients aged 65 years and over).



**Figure 12.** Practice level influenza immunisation uptake data for Torfaen Local Authority based (at risk patients aged under 65 years).

